

WASHINGTON STATE

VOTERS' PAMPHLET

YOUR BALLOT WILL BE MAILED BY MAY 6, 2016

(800) 448-4881 | vote.wa.gov



**PRESIDENTIAL PRIMARY
MAY 24, 2016**



Introduction

I'm pleased to present you this special 2016 Presidential Primary Voters' Pamphlet.

This year's Presidential Primary season has drawn an unusually high level of voter and media interest across the country—and now it's our turn to have our voices heard.

This pamphlet provides information from the candidates about their background and views, along with contact information for their campaigns.

You may be unfamiliar with our Presidential Primary, since we have not had one for eight years. The primary was created in 1989 as a citizens' Initiative to the Legislature. The Presidential Primary is the only Washington State election in which you are required to select a political party.

Our state also has a caucus process. Democrats have chosen to use the caucus process to allocate their national convention delegates; Republicans will use the results of this primary to allocate theirs.

Candidates from both parties will appear on your primary ballot. It is important to note that you are required to declare a party for the primary contest you're voting in. The declarations, written by the parties, appear on the return envelope. Without your signature and party selection, your vote cannot be counted.

All registered Washington voters are urged to take part in this election. We recommend that you return your ballot to a drop box in advance of the May 24 deadline.



A handwritten signature in black ink, appearing to read "Mark Neary".

Mark Neary
Assistant Secretary of State



@secstatewa



/WASecretaryofState
/WashingtonStateElections

Voting in

the Presidential Primary



Your ballot will be mailed by **May 6**.

1 Read the declarations on your return envelope.

2 Mark **one** political party declaration box (required).

3 Sign and date the declarations (required).

A ballot return envelope insert with three numbered steps. Step 1: "Voter's Declaration: I do solemnly swear or affirm under penalty of perjury that I am: a citizen of the State of Washington; at least 18 years old on election day; voting only once in this election; not under the authority of a Washington felony conviction; and not disqualified from voting due to a court order. It is illegal to forge or attempt to forge a ballot, attempt to vote more than once, or falsely signing this declaration. Violation of this declaration is punishable by imprisonment of five years, a maximum fine of \$10,000, or both." Step 2: "Mark one party declaration box (required)". It lists two options: "Democratic Party" with a checkbox and a declaration: "I declare that I consider myself to be a DEMOCRAT and I will not participate in the nomination process of any other political party for the 2016 Presidential election." and "Republican Party" with a checkbox and a declaration: "I declare that I am a Republican and I have not participated and will not participate in the 2016 precinct caucus or convention system of any other party." Step 3: "Sign & date". It has fields for "signature of voter (required)", "date", and "phone". Below that, it says "If you cannot sign make a mark and have two witnesses sign below." and has fields for "witness 1 signature" and "witness 2 signature".

4 Vote for **one** candidate from the political party you marked in Step 2.

i Follow steps shown on the insert included in your ballot packet to return your voted ballot.

Your vote will not count unless you mark one party declaration and sign.

Washington voters do not declare a party preference when we register to vote.

For the Presidential Primary only, the major political parties require voters to subscribe to a specific party declaration. For 2016, both the Republican and Democratic parties submitted party declarations for the Presidential Primary.

You must sign a political party declaration on the ballot return envelope. The declaration signed must match your voted candidate's political party.

Voter Registration Qualifications

You must be at least 18 years old, a U.S. citizen, a resident of Washington State, and not under Department of Corrections supervision for a Washington State felony conviction.

The online and mail-in voter registration and address update deadline has passed. Submit your registration or address update for the next election at **vote.wa.gov**.

New voters may register in person until May 16 at your county elections department.

Military voters are exempt from registration deadlines.

Voting Accessibility Options

Alternative Voters' Pamphlet Formats

Audio and plain text voters' pamphlets are available at vote.wa.gov, or call (800) 448-4881 to subscribe to receive a copy on CD or USB.

Accessible Voting Units

Contact your county to find the accessible voting unit near you! Contact information for every county can be found on pages 14-15 of this pamphlet.

Language Assistance

Việt Nam được nói

Tất cả cử tri ở Tiểu Bang Washington có thể truy cập sách dành cho cử tri và đơn ghi danh cử tri bằng tiếng Việt trực tuyến tại **vote.wa.gov**.

Nếu quý vị hoặc người nào quý vị biết cần trợ giúp ngôn ngữ, xin vui lòng gọi **(800) 448-4881**.

中國口語

所有華盛頓州的選民都可在網站 **vote.wa.gov** 查看中文選民手冊和選民登記表格。

如果您或您認識的人需要語言協助，請致電 **(800) 448-4881**。

Se habla español

Todos los votantes del estado de Washington tienen acceso al folleto electoral y a los formularios de inscripción en español por internet en **vote.wa.gov**.

Si usted o alguien que conoce necesitan asistencia en español llame al **(800) 448-4881**.

Election Results

Download the Election Results app from the app store today!

Search for "WA State Election Results" in the Apple, Android, or Windows app stores.

Results are announced after 8 p.m. on Election Day and are updated frequently.

May 24, 2016 Presidential Primary

Table of Contents

Introduction	2
Voting in the Presidential Primary	3
Additional Voter Information	4
Democratic Candidates	
Hillary Clinton	6
Bernie Sanders	7
Republican Candidates	
Ben Carson.	8
Ted Cruz	9
John R. Kasich	10
Donald J. Trump	11
Voting in Washington State	12
Vote in Honor of a Vet	13
Contact Your County Elections Department.	14



Candidate statements are printed exactly as submitted. The Office of the Secretary of State does not make corrections of any kind or verify statements for truth or fact.



Who donates to campaigns?

Information on financial contributors for presidential candidates is available through the **Federal Election Commission** at fec.gov or (800) 424-9530.



Contact Political Parties

Washington State Democrats
PO Box 4027
Seattle, WA 98194
(206) 583-0664
info@wa-democrats.org
wa-democrats.org

Washington State Republican Party
11811 NE 1st St, Ste A306
Bellevue, WA 98005
(425) 460-0570
wagop@wsrp.org
wsrp.org

Find a Ballot Drop Box

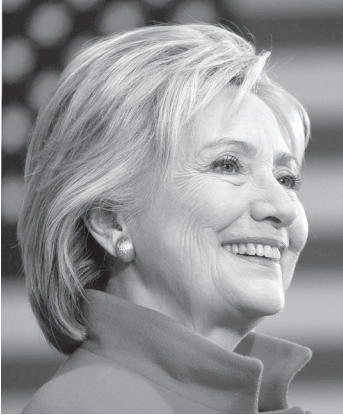


Locate the ballot drop box nearest you by visiting myvote.wa.gov. Locations can be found by logging into myvote.wa.gov, then selecting “Drop Box & Voting Center Locations.”



Presidential Candidates

Democratic Party



Hillary

Clinton

Democratic Party Candidate

Contact Information

(646) 854-1432
info@hillaryclinton.com
www.hillaryclinton.com

Elected Experience

As senator from New York, Hillary expanded health care access for 9/11 responders and veterans, and worked to revitalize rural communities.

Other Professional Experience

From advocating for children as a young lawyer to defending human rights around the world as Secretary of State, Hillary has dedicated her career to fighting for children and families.

Education

As a Yale Law student, Hillary defended children against abuse, addressed systemic racism, and provided free legal help to those who couldn't afford it.

Community Service

From fighting to expand education for Arkansas' poorest children to helping provide health insurance to 8 million children, Hillary's devoted her life to serving others.

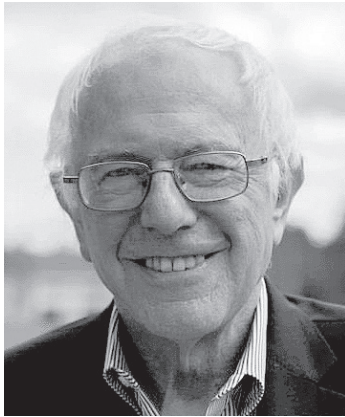
Statement

I'm running for president because I believe we need to tear down all the barriers that prevent Americans from reaching our full potential. It's important that Wall Street never again threatens Main Street. But America isn't a single-issue country, and we need more than a plan for the biggest banks. The middle class needs a raise. We need more good jobs that pay well and can't be outsourced, that provide dignity and a path to a brighter future. We can create those good jobs by building on the progress we've made under President Obama. Let's make new investments in manufacturing, small business, scientific research and enough clean energy to power every home in America.

Let's break down the barriers that keep people on the sidelines of our economy, especially women. We've waited long enough for quality, affordable childcare and paid family and medical leave, and equal pay. Let's break down the barriers that stop our young people from getting the best possible start in life. We need to support great teachers and great schools in every ZIP code, make college more affordable, and help relieve the crushing burden of student debt. Let's take on the epidemic of gun violence in America. We also have to face the reality of systemic racism that, more than a half a century after Rosa Parks sat and Dr. King marched and John Lewis bled, still plays a significant role in determining who gets ahead in America and who gets left behind. We have to invest in communities of color and reform our broken criminal justice and immigration systems. We have to guarantee opportunity, dignity, and justice for every American.

The future we want is within our grasp—let's build it together.

Presidential Candidates Democratic Party



Bernie Sanders

Democratic Party Candidate

Contact Information

(855) 423-7643

info@berniesanders.com

www.berniesanders.com

Elected Experience

United States Senator, Vermont, 2007 to Present; United States Representative, Vermont, 1991 to 2007; Mayor, City of Burlington, 1981 to 1989

Other Professional Experience

College Instructor, Freelance Writer, Documentary Filmmaker, Carpenter

Education

Brooklyn College (Attended); University of Chicago, A.B., 1964

Community Service

No information submitted.

Statement

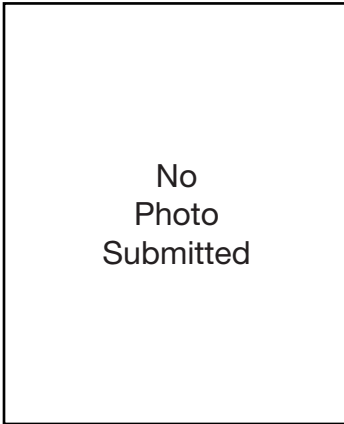
I am asking people not simply to support my candidacy for president, but to be part of a movement of millions of Americans who stand up and say loudly and clearly that this country and our government belong to all of us, and not just a handful of wealthy campaign contributors and large corporations. To my mind, this is the only way to address the major economic, political, social, racial and environmental challenges facing our country.

Given the serious crises this country faces, now is not the time for the same old establishment politics. I am running for President to fight income inequality, create millions of jobs, raise wages, and provide health care for all Americans as a human right. Together, our movement will make public colleges and universities tuition-free, combat climate change, reform a broken criminal justice system, ensure equal pay, and reclaim our democracy from the billionaires who are buying our elections.

We need an economy and a system of justice that works for all Americans, not just the people on top. We need a political revolution demanding our government represents us all, not just the top 1%. If we stand together, there is nothing we cannot accomplish.



Presidential Candidates Republican Party

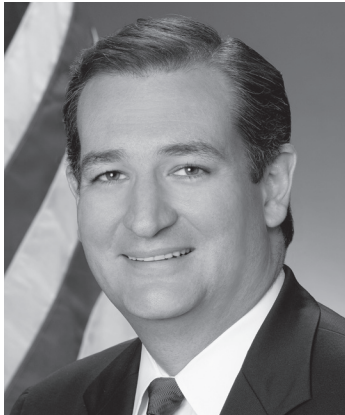


**Ben
Carson**
Republican Party Candidate

Ben Carson publicly suspended his campaign on March 4, however the candidate did not submit a Withdrawal of Candidacy.

This candidate did not submit a candidate statement.

Presidential Candidates Republican Party



Ted

Cruz

Republican Party Candidate

Contact Information

(713) 353-4330
ted@tedcruz.org
www.tedcruz.org

Elected Experience

United States Senator

Other Professional Experience

Solicitor General of Texas, Partner at Morgan, Lewis & Bockius LLP, Adjunct Professor of Law at the University of Texas School of Law, Director of the Office of Policy Planning at the Federal Trade Commission, Associate Deputy Attorney General at the U.S. Department of Justice, and as Domestic Policy Advisor on the 2000 Bush-Cheney campaign. Law Clerk for Chief Justice Rehnquist, Supreme Court of the United States and Judge Luttig, US Court of Appeals for the Fourth Circuit.

Education

Juris Doctor, Harvard Law School. Bachelors in Public Policy, Princeton University

Community Service

No information submitted.

Statement

Ted Cruz has proven to be a passionate and effective fighter for limited government, economic growth, and the Constitution.

Ted's calling to public service has been inspired by his first-hand observation of the pursuit of freedom and opportunity in America. Ted's mother was born in Delaware to an Irish and Italian working-class family. She became the first in her family to go to college. Ted's father fled to the United States in 1957, after having been tortured and imprisoned in Cuba. Today, Ted has been a tireless fighter for liberty his entire life because his family knows what it is like to lose it.

As Solicitor General for the State of Texas and in private practice, Ted authored more than 80 U.S. Supreme Court briefs and argued 43 oral arguments, including nine before the U.S. Supreme Court, and has won an unprecedented series of landmark national victories including defending U.S. sovereignty against the UN and the World Court, defending our Second Amendment right to keep and bear arms, defending the constitutionality of the Ten Commandments monument at the Texas State Capitol and the words "under God" in the Pledge of Allegiance.

In the U.S. Senate, Ted has led the fight to repeal Obamacare, to stop President Obama's illegal and unconstitutional executive amnesty, and to defend life, marriage, the First Amendment, the Second Amendment, and our entire Bill of Rights. And most important, he's kept his promise to speak the truth and do what he said he'd do.

Ted, his wife Heidi, their two daughters, and his entire family have been blessed to live the American Dream — the idea that anyone, through hard work and determination, can achieve anything. And he is committed to ensuring every family has that same opportunity.



Presidential Candidates Republican Party



John R. **Kasich**

Republican Party Candidate

Contact Information

(614) 972-8580
info@johnkasich.com
www.johnkasich.com

Elected Experience

Ohio Governor, 2010-present; Congressman, U.S. House of Representatives, 1983-2000; Budget Committee Chair U.S. House of Representatives; Senator, Ohio State Senate, 1979-1983

Other Professional Experience

"Heartland with John Kasich", Anchor on Fox News Channel, 2001-2009; Three-time New York Times bestselling author; Managing Director, Lehman Brothers, 2001-2008

Education

Graduate of Ohio State University, 1974

Community Service

Husband, father, friend, person of faith, leader, change agent. John Kasich is a lot of things. Through them all runs his honest, direct, authentic, tenacious approach to life that has allowed him, time and again, to do what they said couldn't be done.

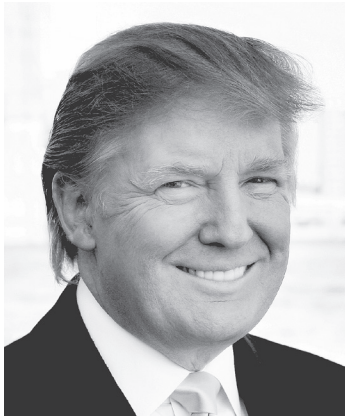
Statement

John Kasich doesn't just talk the talk, he walks the walk. Only one candidate for president knows what it takes to shake-up the system and lift America. Why? Because he's done it. In Washington DC he was the chief architect of four balanced budgets--the first time that had happened since 1969 and it hasn't happened since. As governor of Ohio, he eliminated the largest budget shortfall in state history all while cutting taxes by \$5 billion. As a result, Ohio has become one of the top job creators in America. As president, John Kasich is prepared to shift power, money and influence back to where it belongs -- the states.

Growing up in McKees Rocks, Pennsylvania, a working-class town near Pittsburgh, John Kasich learned the importance of lending a hand-up, not a hand out. By growing the economy, he has successfully improved care for those struggling with mental illness, addiction and the working poor. He's fought against human trafficking and transformed how Ohio approaches community-police relations. Consistently, John Kasich has turned aside from the politics of division that gets us nowhere.

America needs a leader who has the strength, ability and courage to unite our nation and make our country better for our children and grandchildren. John Kasich is that leader.

Presidential Candidates Republican Party



Donald J. **Trump**

Republican Party Candidate

Contact Information

(646) 736-1779
clewandowski@donaldtrump.com
www.donaldjtrump.com

Elected Experience

None

Other Professional Experience

Real Estate developer, golf course developer, best-selling author, hotelier, television producer, entrepreneur.

Education

Graduate of the New York Military Academy Graduate of the Wharton School, the University of Pennsylvania, Philadelphia, Pennsylvania

Community Service

Grand Marshall New York City Veterans Day Parade, New York Police Athletic League, United Way of New York City, countless philanthropic activities.

Statement

Donald J. Trump wants to Make America Great Again. He believes we need to reestablish our proper place in the world by steering our government away from special interests and introducing policies that will put money in people's pockets, restore love of country and raise our status in the world.

Mr. Trump believes in free markets, the importance of a strong family, a culture of Life, a strong military and our country's sacred obligation to take care of our veterans and their families.

Our country has been poorly served by the political class who value their self-interest over the interests of the United States and its citizens. Mr. Trump vows to end the corrupting influence of special interests once and for all.

Under a Trump Administration, American will begin winning again. No longer will China, Mexico, Japan and other countries manipulate their currencies in order to benefit their citizens at the expense of our citizens.

We need free and fair trade. We must restore the integrity of our national borders. A country cannot exist without strong borders. We will welcome international visitors, but we must build a wall to protect our southern border.

Our Federal tax burden inhibits economic growth and takes too much from hard working Americans. We must reduce the burden by lowering rates, eliminating loopholes, and simplifying the tax code.

We must pay particular attention to fixing our corporate tax structure so capital and jobs will come back to America. We will rebuild our military, return education to the parents and students, make college affordable and make sure we fix our healthcare system by getting rid of Obamacare and replacing it with free market solutions.

We will protect the Second Amendment and will defend religious liberty for all. Together, we will Make America Great Again.

Voting in

Washington State

VOTING FOR THE FIRST TIME IN WASHINGTON?

Welcome to Washington! As a new resident or voter in the state, you can register to vote online, by mail, in person, or when you get your new state driver license or ID at the Department of Licensing.

You may not vote in multiple states. Be sure to cancel any previous voter registration before you register in Washington. You do not have to declare a party affiliation when you register to vote in Washington.



REGISTER TO VOTE

You can register in person at your local elections office or online at myvote.wa.gov.



RECEIVE VOTERS' PAMPHLET

The Voters' Pamphlet is a tool to help you make an informed decision on candidates and measures. This is sent out to every household in Washington State and should arrive before your ballot arrives.



BALLOT ARRIVES IN THE MAIL

Your ballot will be mailed by May 6. Accessible Voting Units (AVUs) are available at voting centers. Military and overseas voters have 45 days to return their ballot.



VOTE BY MAIL

Mail your ballot back to your county auditor's office or drop it into a ballot drop box no later than 8:00 p.m. on Election Day. For a list of drop boxes, visit myvote.wa.gov.



VOTE IN HONOR OF A VET

Our right to vote is protected by the extraordinary men and women of the U.S. Armed Forces. Now is your chance to thank them for their service!

The Office of the Secretary of State invites you to recognize active military and veterans from Washington State by posting a personal story and a photo. We'll send you a pin to wear proudly in respect and gratitude for your veteran.

YOU CAN PARTICIPATE IN 3 EASY STEPS

1

Visit our website
sos.wa.gov/elections/honorveteran/



2

Upload your story
and a picture



3

You will receive a pin to
wear on Election Day



SHARE YOUR STORY!

[SOS.WA.GOV/ELECTIONS/HONORVETERAN](https://sos.wa.gov/elections/honorveteran)

Contact your county elections department

Adams County

210 W Broadway, Ste 200
Ritzville, WA 99169
(509) 659-3249
heidih@co.adams.wa.us

Asotin County

PO Box 129
Asotin, WA 99402
(509) 243-2084
dmckay@co.asotin.wa.us

Benton County

PO Box 470
Prosser, WA 99350
(509) 736-3085
elections@co.benton.wa.us

Chelan County

PO Box 4760
Wenatchee, WA 98807
(509) 667-6808
elections.ballots@co.chelan.wa.us

Clallam County

223 E 4th St, Ste 1
Port Angeles, WA 98362
(360) 417-2221
jmaxion@co.clallam.wa.us

Clark County

PO Box 8815
Vancouver, WA 98666-8815
(360) 397-2345
elections@clark.wa.gov

Columbia County

341 E Main St, Ste 3
Dayton, WA 99328
(509) 382-4541
sharon_richter@co.columbia.wa.us

Cowlitz County

207 4th Ave N, Rm 107
Kelso, WA 98626-4124
(360) 577-3005
elections@co.cowlitz.wa.us

Douglas County

PO Box 456
Waterville, WA 98858
(509) 745-8527
elections@co.douglas.wa.us

Ferry County

350 E Delaware Ave, Ste 2
Republic, WA 99166
(509) 775-5225 ext. 1139
elections@co.ferry.wa.us

Franklin County

PO Box 1451
Pasco, WA 99301
(509) 545-3538
elections@co.franklin.wa.us

Garfield County

PO Box 278
Pomeroy, WA 99347-0278
(509) 843-1411
ddeal@co.garfield.wa.us

Grant County

PO Box 37
Ephrata, WA 98823
(509) 754-2011 ext 377
elections@co.grant.wa.us

Grays Harbor County

100 W Broadway, Ste 2
Montesano, WA 98563
(360) 964-1556
emailballot@co.grays-harbor.wa.us

Island County

PO Box 1410
Coupeville, WA 98239
(360) 679-7366
elections@co.island.wa.us

Jefferson County

PO Box 563
Port Townsend, WA 98368-0563
(360) 385-9119
elections@co.jefferson.wa.us

King County

919 SW Grady Way
Renton, WA 98057
(206) 296-8683
elections@kingcounty.gov

Kitsap County

614 Division St, MS 31
Port Orchard, WA 98366
(360) 337-7128
auditor@co.kitsap.wa.us

Kittitas County

205 W 5th Ave, Ste 105
Ellensburg, WA 98926-2891
(509) 962-7503
elections@co.kittitas.wa.us

Klickitat County

205 S Columbus, Stop 2
Goldendale, WA 98620
(509) 773-4001
voting@co.klickitat.wa.us

Contact your county elections department

Lewis County

PO Box 29
Chehalis, WA 98532-0029
(360) 740-1278
heather.boyer@lewiscountywa.gov

Lincoln County

PO Box 28
Davenport, WA 99122-0028
(509) 725-4971
sjohnston@co.lincoln.wa.us

Mason County

PO Box 400
Shelton, WA 98584
(360) 427-9670 ext 470
elections@co.mason.wa.us

Okanogan County

PO Box 1010
Okanogan, WA 98840-1010
(509) 422-7240
elections@co.okanogan.wa.us

Pacific County

PO Box 97
South Bend, WA 98586
(360) 875-9317
pgardner@co.pacific.wa.us

Pend Oreille County

PO Box 5015
Newport, WA 99156
(509) 447-6472
elections@pendoreille.org

Pierce County

2501 S 35th St, Ste C
Tacoma, WA 98409
(253) 798-VOTE (8683)
pcelections@co.pierce.wa.us

San Juan County

PO Box 638
Friday Harbor, WA 98250-0638
(360) 378-3357
elections@sanjuanco.com

Skagit County

PO Box 1306
Mount Vernon, WA 98273
(360) 416-1702
scelections@co.skagit.wa.us

Skamania County

PO Box 790
Stevenson, WA 98648-0790
(509) 427-3730
elections@co.skamania.wa.us

Snohomish County

3000 Rockefeller Ave, MS 505
Everett, WA 98201-4060
(425) 388-3444
elections@snoco.org

Spokane County

1033 W Gardner Ave
Spokane, WA 99260
(509) 477-2320
elections@spokanecounty.org

Stevens County

215 S Oak St, Rm 106
Colville, WA 99114-2836
(509) 684-7514
elections@co.stevens.wa.us

Thurston County

2000 Lakeridge Dr SW
Olympia, WA 98502-6090
(360) 786-5408
elections@co.thurston.wa.us

Wahkiakum County

PO Box 543
Cathlamet, WA 98612
(360) 795-3219
tischerd@co.wahkiakum.wa.us

Walla Walla County

PO Box 2176
Walla Walla, WA 99362-0356
(509) 524-2530
elections@co.walla-walla.wa.us

Whatcom County

PO Box 398
Bellingham, WA 98227-0398
(360) 778-5102
elections@co.whatcom.wa.us

Whitman County

PO Box 191
Colfax, WA 99111
(509) 397-5284
elections@co.whitman.wa.us

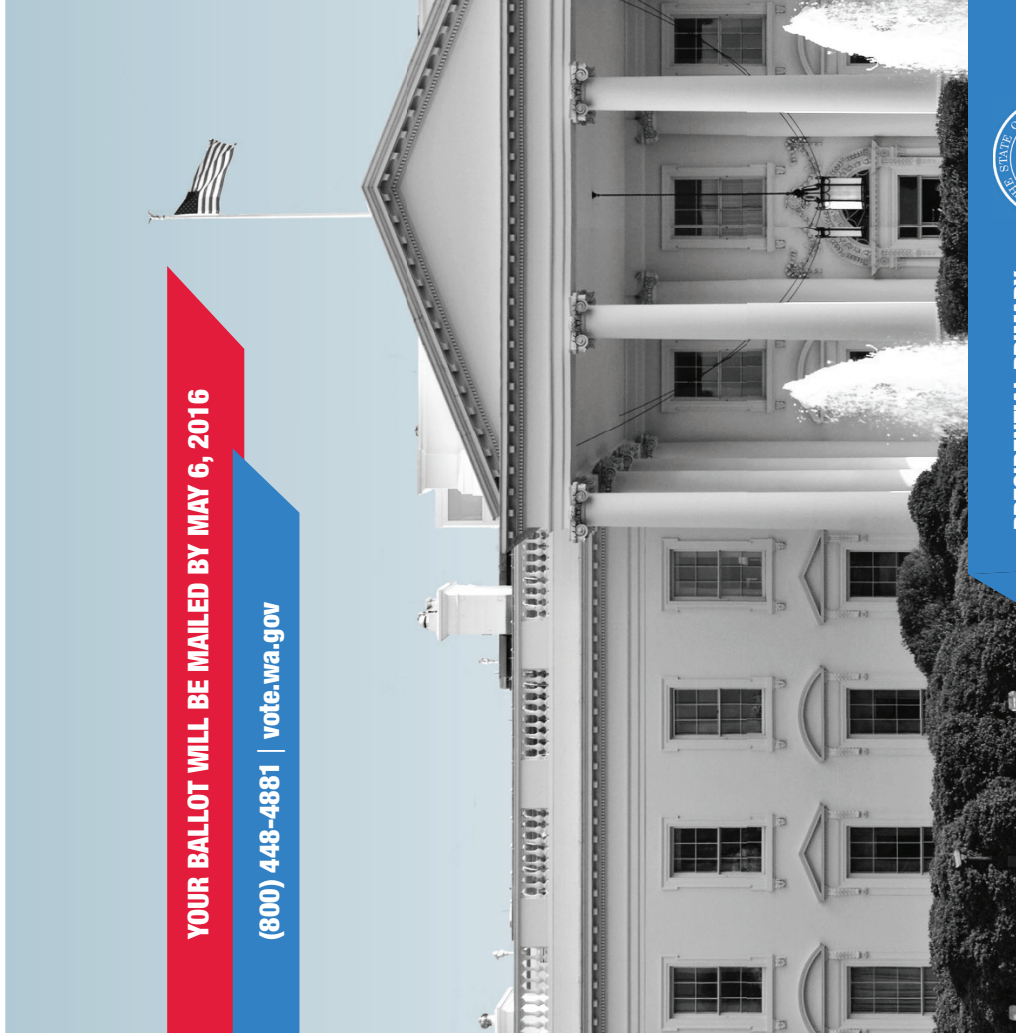
Yakima County

PO Box 12570
Yakima, WA 98909-2570
(509) 574-1340
iVote@co.yakima.wa.us

WASHINGTON STATE
VOTERS'
PAMPHLET

YOUR BALLOT WILL BE MAILED BY MAY 6, 2016

(800) 448-4881 | vote.wa.gov



**PRESIDENTIAL PRIMARY
MAY 24, 2016**



Office of the Secretary of State

PO Box 40220

Olympia WA 98504-0220

NONPROFIT ORG.
U.S. POSTAGE
PAID
SEATTLE, WA
PERMIT NO. 1216
ECRWSS



Edition 2

Residential Customer

Statewide except Adams, Franklin & Yakima
Counties

Para recibir un folleto en español,
comuníquese al (800) 448-4881
o visite vote.wa.gov.