

1992

VOTERS PAMPHLET

November 3

GENERAL ELECTION

State of
Washington



Published by the
Secretary
of State



EDITION 3

INTRODUCTION TO THE 1992 VOTERS PAMPHLET

Welcome to the 1992 Washington State Voters Pamphlet. This year we commemorate the anniversaries of great change in the Pacific Northwest. It was 200 years ago that explorers from Spain, England, France, Portugal, Sweden and the United States came to our area, met local tribal leaders and established new relationships. These journeys effectively put this region on the world map and set the stage for Washington state's emergence as a crossroads for international commerce.

The election year of 1992 will be one of great change as well. As noted by numerous political observers, the decisions made on November 3 will have more impact on our state's long-term future than any election in recent memory. It is important not only that you participate, but that you participate as an informed voter.

Your Voters Pamphlet contains a wealth of information regarding two initiative measures appearing on the statewide ballot as well as statements and photographs from scores of candidates seeking positions from the courthouse to the White House. I urge you to read the pamphlet thoroughly, including the additional information regarding the election process.

Should you need special help, or have questions or suggestions for improvements to our voter information, please feel free to contact the state's toll-free Voter Hotline at 1-800-448-4881 (TDD for the hearing or speech impaired - 1-800-422-8683). Also, remember that you may now request an absentee ballot by telephone. Simply call your county auditor or county elections department to have a ballot mailed to you.

Good luck and good voting.



Sincerely,

RALPH MUNRO
Secretary of State

FRONT COVER: The replica 18th century ship, LADY WASHINGTON, sails from Aberdeen on its 1992 Bicentennial Voyage. Two hundred years ago, aboard ships like the LADY, Tatoosh talked and traded; Robert Gray from Boston entered and named the Columbia River; Englishman George Vancouver explored and named Puget Sound, and Salvador Fidalgo from Spain sailed to garrison a post on Makah land at Neah Bay.

TABLE OF CONTENTS

Voter's Checklist	4
Political Party Information	5
Public Disclosure Information	5
Federal Tax Credit Information	5
State Measures	
Initiative Measure 573	6
Initiative Measure 134	8
Text of Measures	10
Candidates for Federal Offices	
President and Vice President.....	22
U.S. Senate	33
U.S. House of Representatives	35
Candidates for State Offices	
Governor	37
Lieutenant Governor.....	39
Secretary of State	41
Treasurer	42
Auditor	43
Attorney General	44
Commissioner of Public Lands.....	45
Superintendent of Public Instruction	46
Insurance Commissioner	47
Candidates for Judicial Offices	
Supreme Court	48
Candidates for State Legislature	50
Precinct Committee Officer Information	59
Election Day and Voting Information	60
Absentee Ballot Information	61
Absentee Ballot Applications	62
Comment Sheet	63

Due to the nature of the publication process, this edition of the Voters Pamphlet may include some candidates who will not appear on the ballot for your area. To verify which offices will appear on your ballot, contact your county auditor or county elections department. Telephone numbers are listed in the back of this pamphlet.

VOTER'S CHECKLIST

Every Washington voter will have the opportunity to vote on two statewide measures as well as federal and state candidates at the state general election on November 3, 1992. Voters are encouraged to bring any list or sample ballot to the polling place to make voting easier. State law provides: "Any voter may take into the voting booth or voting device any printed or written material to assist in casting his or her vote." (RCW 29.51.180).

		YES	NO
INITIATIVE MEASURE 573 Shall candidates for certain offices, who have already served for specified time periods in those offices, be denied ballot access?		<input type="checkbox"/>	<input type="checkbox"/>
INITIATIVE MEASURE 134 Shall campaign contributions be limited; public funding of state and local campaigns be prohibited; and campaign related activities be restricted?		<input type="checkbox"/>	<input type="checkbox"/>
PRESIDENT/VICE PRESIDENT	COMMISSIONER OF PUBLIC LANDS		
U.S. SENATE	SUPERINTENDENT OF PUBLIC INSTRUCTION		
U.S. REPRESENTATIVE	INSURANCE COMMISSIONER		
GOVERNOR	STATE SUPREME COURT		
LIEUTENANT GOVERNOR	Position No. 1: _____ Position No. 2: _____		
SECRETARY OF STATE	SUPERIOR COURT (if applicable)		
STATE TREASURER	STATE SENATOR (if applicable)		
STATE AUDITOR	STATE REPRESENTATIVE		
ATTORNEY GENERAL	Position No. 1: _____ Position No. 2: _____		

LOCAL ELECTIONS _____

VOTER PARTICIPATION IN ELECTION CAMPAIGNS

Any person who wishes to participate in the election campaign process through financial contributions, volunteer work or other types of involvement, may contact the candidate or party of his or her choice for more information. Listed below are the addresses and telephone numbers of the major and minor political parties with candidates on the general election ballot.

POLITICAL PARTIES

Libertarian Party	P.O. Box 20732, Seattle, 98102	(206) 329-5669
Natural Law Party	5235 S. Graham St., Seattle, 98118	(206) 781-6637
New Alliance Party	1202 E. Pike #539, Seattle, 98122	(206) 329-9540
Socialist Workers Party	1405 E. Madison, Seattle, 98122	(206) 323-1755
State Democratic Party	1701 Smith Tower, Seattle, 98104	(206) 583-0664
State Republican Party	9 Lk. Bellevue Dr., Bellevue, 98005	(206) 454-1992
The Populist Party	1916 Pike Place, Ste. 695, Seattle, 98101	(206) 781-5617
Washington Taxpayers Party	P.O. Box 25736, Seattle, 98125-1236	(206) 368-0584

DISCLOSURE REQUIREMENTS FOR CONTRIBUTIONS

Contributions to Candidates and Political Committees: State law does not limit the amount a person may contribute to support or oppose a candidate, ballot measure, political party or political committee. During the 21 days before the general election, however, a person may contribute no more than \$50,000 to a candidate for statewide office or \$5,000 to any other candidate or political committee. Contributions from corporations, unions, businesses, associations and similar organizations are permitted.

Registration and Reporting by Candidates and Political Committees: Within two weeks after a person becomes a candidate or a political committee is organized, a campaign finance registration statement must be filed with the Public Disclosure Commission and the local county elections official. (Committees that form within three weeks of the election must register within three business days.) The candidate or committee treasurer is also required to report periodically the source and amount of campaign contributions of \$25 or more and to list campaign expenditures.

These reports are open to the public. Copies are available at the Public Disclosure Commission in Olympia or at the county elections office in the county where the candidate lives. In addition, the campaign financial books and records of a candidate or committee are available for public inspection the last eight days (Monday through Friday) before each election. The campaign registration shows the time and place where the records may be inspected.

Independent Campaign Expenditures: Anyone making an expenditure in support of or opposition to a state or local candidate or ballot proposition (not including contributions made to a candidate or political committee) must file a report with the Public Disclosure Commission within five days if the expenditure is \$100 or more. Reporting forms are available from the Commission and county election offices.

Federal Campaigns: Contributions to U.S. Senate and House of Representative candidates are regulated by federal law. An individual may contribute a maximum of \$1,000 in the primary election and \$1,000 in the general election to each candidate for senator and representative. Corporations, businesses, unions and similar groups are generally prohibited from contributing to federal campaigns. Copies of federal campaign finance reports are available from the Public Disclosure Commission.

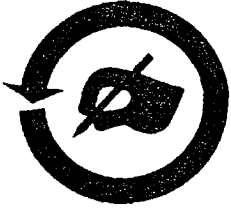
For additional information contact: Public Disclosure Commission, 711 Capitol Way, Rm. 403, P.O. Box 40908, Olympia WA 98504-0908, (206) 753-1111, or, for federal campaigns, Federal Election Commission, 1-800-424-9530.

FEDERAL INCOME TAX CREDITS AND DEDUCTIONS FOR CONTRIBUTIONS

Political Contributions Tax Credit: The Federal Tax Reform Act of 1986 eliminated the personal tax credit previously allowed for political contributions.

As in the past, contributions or gifts made to political parties or candidates may not be deducted as a business expense. In addition, expenses paid or incurred to take part in any political campaign on behalf of a candidate for public office are not deductible as a business expense. Finally, indirect political contributions, such as advertising for a political party or admission to a program with proceeds going to a political party or candidate, may not be deducted as a business expense.

Presidential Election Campaign Fund Checkoff: Individuals, however, may make a deductible contribution to the Presidential Election Campaign Fund Checkoff. This fund was established to help pay for presidential election campaigns. \$1 may be taken (\$2 on a joint return) from an individual's taxes to go to a general fund, not for any specific party, to meet the expenses of the 1992 presidential election. The contribution will not increase your tax or reduce your refund.



INITIATIVE MEASURE 573

TO THE PEOPLE

Note: The ballot title and explanatory statement were written by the Attorney General as required by law. The complete text of Initiative Measure 573 begins on page 10.

Statement for

"I'm in favor of term limits, six years, not twelve. Why? Because career politicians have long been bilking the public," broadcast journalist David Brinkley, *People Magazine* 7/27/92

REDUCE THE INFLUENCE OF SPECIAL INTERESTS

Incumbents easily dominate elections through free mailing, large staffs, and special interest funding. By leveling the playing field, term limits will attract more candidates thereby offering voters real choices. Initiative 573 will force rotation in office, breaking up long-term relationships.

NO LOSS OF INFLUENCE WITH INITIATIVE 573

Washington state will not lose its congressional clout. Federal limits will not take effect until nine other states adopt similar legislation. Incumbents who reach the limits of their terms may run as write-in candidates. Initiative 573 is not retroactive; previous time in office is not counted.

TERM LIMITS IS A NATIONAL MOVEMENT

Washington state is not alone. Citizens in at least 15 states will vote on term limits this November. Our Founding Fathers never envisioned career politicians. Many officials already have limited terms: President, 31 governors, and many county and city politicians. In 1990 California, Colorado and Oklahoma adopted term limits. Term limits will replace the seniority based system with one based on merit.

Official Ballot Title:

Shall candidates for certain offices, who have already served for specified time periods in those offices, be denied ballot access?

The law as it now exists:

The length of previous service in public office does not disqualify anyone from appearing on the election ballot for state offices. One can be a candidate on the election ballot for election or re-election to the state legislature, governor, lieutenant governor, or congress without any limits based on prior service in those offices.

RESTORE CHOICE TO THE VOTER

As Harry Truman said, term limits would "help cure senility and seniority — both terrible legislative diseases."

Career politicians gave us a national debt of \$4 trillion, a peacetime tax burden that is the highest in our nation's history, the S&L bailout and outrageous congressional banking and postal scandals that defy the ethics of public office.

*It's time for a change. We need term limits.
Vote YES on Initiative 573.*

Rebuttal of Statement against

We listened to the voters and improved term limits.

Term limits reduces the power of special interests, not the interests of people.

Incumbents are re-elected 96% of the time. Incumbent turnover this year is high due to redistricting, scandals and converting campaign funds to personal loot.

We have the most "experienced" legislature and Congress ever, causing the worst deficits and scandals ever. People want change, not deadwood.

Washington needs term limits. Vote Yes on I-573.
For more information call (206) 759-1212.

Voters Pamphlet Statement Prepared by:

WALLACE M. RUDOLPH, Professor of Constitutional, Legislative and Administrative Law, Puget Sound School of Law; JACK METCALF, State Senator, Chair of Senate Environmental and Natural Resources Committee; SHERRY BOCKWINKEL, Independent Businesswoman.

Advisory Committee: CAROLYN LOGUE, Director, National Federation of Independent Business; PAUL BARDEN, King County Councilman; HAROLD KEAN, former Chairman and CEO of Washington Federal Savings and Loan; SAM ALLRED, Democratic Precinct Chair, Sumner; JOHN SONNELAND, M.D., Spokane area businessman and professional.

The effect of Initiative Measure 573, if approved into law:

This initiative would consider only years of service in office after November 3, 1992 to deny some potential candidates access to the election ballot. Service prior to that date would not count.

The offices and length of service for which a potential candidate would be denied access to the election ballot are:

- 1) for governor, if the candidate served 8 of the previous 14 years as governor;
- 2) for lieutenant governor, if the candidate served 8 of the previous 14 years as lieutenant governor;
- 3) for senator in the state legislature, if the candidate served 8 of the previous 14 years as a senator;
- 4) for representative in the state legislature, if the candidate served 6 of the previous 12 years as a representative; and
- 5) for either the house or senate in the state legislature, if the candidate served in the legislature for 14 of the previous

20 years.

While such potential candidates would not be permitted to appear upon the ballot, a write-in candidacy is permitted.

This initiative also provides that only if 9 other states pass laws limiting ballot access or limiting the terms of federal legislative offices, would Congressional representatives and United States senators from Washington state be subject to restrictions for access to the election ballot. Only the years of service which occur after November 2, 1992 would be considered. Service prior to that date would not count.

If nine other states act, then the Congressional offices and the time periods which would deny a potential candidate access to the election ballot would be:

- 1) for a Washington representative to the United States Congress, if the candidate served as a representative for 6 of the previous 12 years; and

- 2) for a United States senator from Washington, if the candidate served as senator for 12 of the previous 18 years.

Write-in candidacies would be permitted for such offices.

Statement against

NEW, IMPROVED TERM LIMITS? DON'T BELIEVE IT

Washington citizens rejected term limits in 1991, and their reasons remain valid in 1992. Delaying term limit restrictions a few years doesn't make the repercussions more acceptable.

TERM LIMITS THREATEN OUR QUALITY OF LIFE

Last November, voters said they weren't willing to give up this state's strength in Congress in 1994. Is it somehow more acceptable to give it up in 1998? Will our concerns about offshore drilling, affordable power, transportation funding, Hanford cleanup, and other federally decided issues be diminished by then? Are we willing to play Russian Roulette with Washington's future and unilaterally give away the strength we've taken years to achieve?

TERM LIMITS ARE UNNECESSARY

This year alone, Washington state will experience turn-overs of AT LEAST 45 percent in our congressional delegation, 30 percent in the state Senate, and 29 percent in the state House of Representatives. And at least four of the nine statewide offices will change hands.

WE NEED A MIX OF NEW AND EXPERIENCED LAWMAKERS WORKING FOR US

No one wants stagnation in government, but the arbitrary cutoffs imposed by I-573 would cost us vital knowledge, expertise and clout. We all benefit when new office-holders are able to work alongside veterans to learn the ropes and

become skilled lawmakers working successfully for their constituents.

The key to responsive government is dedicated, informed voters - voters who examine candidates carefully, communicate their community's priorities, and refuse to reelect politicians who fail to meet expectations.

No citizen should give up the right to elect, or reelect, the leader of her/his choice.

Say NO to the term limit crusade and yes to effective government.

Rebuttal of Statement for

Term limits would take away your right to choose.

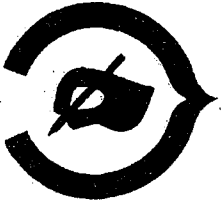
If you don't like the elected officials serving you now, use your democratic right to vote to get them out of office. But if your elected officials are doing a good job, keep them in office. That's the choice you have now, and that's the choice you would lose with term limits.

Term limits take away your freedom and our clout in Washington, D.C. Vote NO.

For more information call (206) 628-6163.

Voters Pamphlet Statement Prepared by:

BOOTH GARDNER, Governor; MARGARET COLONY, President, League of Women Voters.



INITIATIVE MEASURE 134

TO THE LEGISLATURE

Note: The ballot title and explanatory statement were written by the Attorney General as required by law. The complete text of Initiative Measure 134 begins on page 11.

Statement for

Ready for a shock? Here's three:

- Spending on political campaigns in Washington skyrocketed to an all-time high of \$12 million in 1990.
- That year, 20 percent of campaign contributions to statewide and legislative candidates came from individual citizens.
- Incredibly, 61 percent of that \$12 million was paid to politicians by political action committees, unions, corporations and other special interests.

Can we really expect our political candidates and public officials to put *our* interests ahead of the special interests when those big corporations, committees and unions can contribute \$10,000, \$20,000 - even \$50,000 at a time?

Initiative 134 will put the average voter on even ground with the special interests, by holding individuals, PAC's, unions and corporations to the same contribution limit: \$500 per legislative candidate per election (\$1,000 per candidate for statewide office). It would also restrict contributions from political parties and caucuses to candidates.

Initiative 134 will help clean up campaigns in Washington. The new law would prohibit political fund raising from 30 days before a legislative session until 30 days after it ends. It would ban the transfer of funds from one candidate to another and strictly limit taxpayer-financed mailings by incumbent legislators.

Importantly, Initiative 134 would reduce overall spending on political campaigns in Washington, while *prohibiting* the use of state tax dollars to fund political campaigns.

Vote for Initiative 134 and you'll help break the power of special interests - and put the elected officials of today and tomorrow back to work for the people of Washington.

Official Ballot Title:

Shall campaign contributions be limited; public funding of state and local campaigns be prohibited; and campaign related activities be restricted?

The law as it now exists:

State law does not limit the amounts which can be contributed to campaigns for statewide elected offices and legislative offices, except during the last 21 days of the general election campaign. Contributions are required to be reported to the Public Disclosure Commission. Elected officials and executive state officers must annually report to the Commission any gifts they received as well as any contributions made to their public office fund.

Rebuttal of Statement against

Don't be misled. I-134 impacts *all* sides. It *equally* limits contributions from PACs, unions and individuals to candidates from *both* political parties.

I-134 strictly prohibits public financing schemes which provide "incumbency insurance" and use tax dollars to help re-elect incumbent lawmakers.

I-134 is our *only* chance to limit campaign influence by special interests and make candidates more accountable to *the people*. I-134 is supported by 40+ independent organizations — and by more than 225,000 Washington citizens.

Voters Pamphlet Statement Prepared by:

MIKE WATTERS, President, Washington State Dairy Federation;
GARY SMITH, Executive Director, Independent Business Assoc.;
CAROLYN LOGUE, State Director, National Federation of Independent Business.

Some local governments have ordinances providing the availability of public funds for political campaigns for municipal offices.

The effect of Initiative Measure 134, if approved into law:

This initiative would establish maximums for permissible political contributions to campaigns for state legislative offices and the nine statewide elected officers (governor, lieutenant governor, secretary of state, attorney general, commissioner of public lands, insurance commissioner, treasurer, auditor and superintendent of public instruction). The maximum dollar amount is a \$500 contribution to legislative campaigns and \$1,000 for campaigns for statewide offices. Those maximums would separately apply to the primary and general elections. Political parties and legislative caucuses are permitted to make larger contributions with a maximum of \$.50 times each registered voter within the election area.

Legislators, state officials or anyone acting on their behalf would be prohibited from soliciting campaign contributions during the period commencing thirty days before a regular session of the legislature, until thirty days after the adjournment of the regular session. Also, state officials would be prohibited from soliciting

political contributions from employees in the state official's agency.

Contributions would be prohibited from businesses not doing business in Washington and from unions having less than ten members in the state.

There would be restrictions on publicly funded, unsolicited mailings by legislators. Voluntary state payroll deductions for political committees would no longer be permitted and agency shop fees could not be used for political purposes without individual authorization. Campaign contributions could not be used to repay more than \$3,000 of a candidate's loans to the candidate's campaign.

Independent expenditure advertising would have to identify the top five contributors paying for the ad, and further disclosures to the Public Disclosure Commission would be required.

Elected officials and executive state officers would annually be required to file a statement describing any gifts received during the preceding year, but the annual reporting of public office funds would be repealed.

No public funds could be used to finance political campaigns for state or local offices.

The dollar amounts referred to in the initiative would be changed every two years by the Public Disclosure Commission to reflect changes in the inflation index. Penalties would be provided and other changes would be made.

Statement against

REAL CAMPAIGN FINANCE REFORM MUST LIMIT BOTH SPENDING AND CONTRIBUTIONS

- **Effective campaign reform must limit both campaign spending and contributions.** Congress has had contribution limits similar to those in I-134 for years and these limits have done nothing to prevent special interest scandals such as the S&L debacle.

- **Contributions limits alone are a sure-fire incumbent protection plan.** As long as the sky is the limit on spending, a challenger can never hope to keep pace with an incumbent's ability to raise political funds.

- **I-134 doesn't limit how much a candidate can spend on their own campaign**—wealthy individuals are free to spend as much as they like to "buy" an election.

REAL REFORM SHOULD AFFECT ALL POLITICAL PARTIES EQUALLY

- **I-134 is just more of the same old partisan politics. GOP officials admit the initiative was drafted to favor Republicans.** Independent analysis by the Seattle Post-Intelligencer shows that the proposal is specifically designed to hit Democratic candidates harder.

- **I-134 doesn't have grass-roots support.** The signatures that put I-134 on the ballot were not collected by citizen volunteers. Signatures for I-134 were bought and paid for with large contributions from big business interests and powerful politicians.

REAL REFORM SHOULD LIMIT THE INFLUENCE OF PACs

- **I-134 doesn't limit how much a candidate can take from**

PACs, it allows candidates to be 100% special-interest funded. Unless the influence of special interest PACs are limited, the views of the average person will be drowned out.

REAL REFORM SHOULD NOT REPEAL EFFECTIVE LOCAL REFORMS

- **I-134 repeals the popular and highly effective local campaign spending limit laws adopted by citizens in Seattle and King County.** These laws have been nationally acclaimed as models of effective reform.

Rebuttal of Statement for

DON'T BE FOOLED BY FALSE REFORM.

Passing I-134 won't hold down campaign spending or clean up campaigns, but it will relieve the pressure on politicians to accept *real* reform.

I-134 *claims* it will reduce campaign spending, but contribution limits alone have *never* succeeded in holding down campaign spending;

I-134 *claims* it will break the power of special interests, but is actually backed by those same special interests.

VOTE NO ON I-134, FALSE CAMPAIGN FINANCE REFORM.

Voters Pamphlet Statement Prepared by:

LORRAINE HINE, State Representative; MARGARET COLONY, President, League of Women Voters; JIM STREET, Seattle City Councilmember.

Advisory Committee: CAL ANDERSON, State Representative; LAWRENCE KENNEY, President, Washington State Labor Council; RICK BUNCH, Executive Director, WashPig; DARLENE MADENWALD, President, Washington Environmental Council.



COMPLETE TEXT OF Initiative Measure 573

AN ACT Relating to ballot access for elected officials; adding a new section to chapter 43.01 RCW; adding a new section to chapter 44.04 RCW; adding new sections to chapter 29.68 RCW; adding a new section to chapter 29.51 RCW; adding a new section to chapter 29.15 RCW; adding a new section to chapter 7.16 RCW; and creating a new section.

BE IT ENACTED BY THE PEOPLE OF THE STATE OF WASHINGTON:

NEW SECTION. Sec. 1. The people of the state of Washington find that:

(1) The people will best be served by citizen legislators who are subject to a reasonable degree of rotation in office;

(2) Entrenched incumbents have become indifferent to the conditions and concerns of the people;

(3) Entrenched incumbents have an inordinate advantage in elections because of their control of campaign finance laws and gerrymandering of electoral districts;

(4) Entrenched incumbency has discouraged qualified citizens from seeking public office;

(5) Entrenched incumbents have become preoccupied with their own reelection and devote more effort to campaigning than to making legislative decisions for the benefit of the people;

(6) Entrenched incumbents have become closely aligned with special interest groups who provide contributions and support for their reelection campaigns, give entrenched incumbents special favors, and lobby office holders for special interest legislation to the detriment of the people of this state, and may create corruption or the appearance of corruption of the legislative system;

(7) The people of Washington have a compelling interest in preventing the self-perpetuating monopoly of elective office by a dynastic ruling class.

The people of the state of Washington therefore adopt this act to limit ballot access of candidates for state and federal elections.

NEW SECTION. Sec. 2. A new section is added to chapter 43.01 RCW to read as follows:

(1) No person is eligible to appear on the ballot or file a declaration of candidacy for governor who, by the end of the then current term of office will have served, or but for resignation would have served, as governor during eight of the previous fourteen years.

(2) No person is eligible to appear on the ballot or file a declaration of candidacy for lieutenant governor who, by the end of the then current term of office will have served, or but

for resignation would have served, as lieutenant governor during eight of the previous fourteen years.

NEW SECTION. Sec. 3. A new section is added to chapter 44.04 RCW to read as follows:

(1) No person is eligible to appear on the ballot or file a declaration of candidacy for the house of representatives of the legislature who, by the end of the then current term of office will have served, or but for resignation would have served, as a member of the house of representatives of the legislature during six of the previous twelve years.

(2) No person is eligible to appear on the ballot or file a declaration of candidacy for the senate of the legislature who, by the end of the then current term of office will have served, or but for resignation would have served, as a member of the senate of the legislature during eight of the previous fourteen years.

(3) No person is eligible to appear on the ballot or file a declaration of candidacy for the legislature who has served as a member of the legislature for fourteen of the previous twenty years.

NEW SECTION. Sec. 4. A new section is added to chapter 29.68 RCW to read as follows:

No person is eligible to appear on the ballot or file a declaration of candidacy for the United States house of representatives who, by the end of the then current term of office will have served, or but for resignation would have served, as a member of the United States house of representatives during six of the previous twelve years.

NEW SECTION. Sec. 5. A new section is added to chapter 29.68 RCW to read as follows:

No person is eligible to appear on the ballot or file a declaration of candidacy for the United States senate who, by the end of the then current term of office will have served, or but for resignation would have served, as a member of the United States senate during twelve of the previous eighteen years.

NEW SECTION. Sec. 6. A new section is added to chapter 29.51 RCW to read as follows:

Nothing in sections 2 through 5 of this act prohibits a qualified voter of this state from casting a ballot for any person by writing the name of that person on the ballot in accordance with RCW 29.51.170 or from having such a ballot counted or tabulated, nor does anything in sections 2 through 5 of this act prohibit a person from standing or campaigning for an elective office by means of a write-in campaign.

NEW SECTION. Sec. 7. A new section is added to chapter 29.15 RCW to read as follows:

(1) The secretary of state or other election official authorized by law shall not accept or verify the signatures, nor accept a declaration of candidacy or a nomination paper,



**COMPLETE TEXT OF
Initiative Measure 573
(con't.)**

from or on behalf of a person who, by reason of sections 2 through 5 of this act, is ineligible for the office, nor allow the person's name to appear on the ballot.

(2) No terms or years served in office before November 3, 1992, may be used to determine eligibility to appear on the ballot.

NEW SECTION. Sec. 8. A new section is added to chapter 29.68 RCW to read as follows:

Sections 4 and 5 of this act, regarding candidates for federal legislative office, are not effective until nine states other than Washington have passed laws limiting ballot access or terms of federal legislative office, or both, based on length of service in federal legislative office.

NEW SECTION. Sec. 9. A new section is added to chapter 7.16 RCW to read as follows:

Any resident of this state may bring suit to enforce sections 2 through 8 of this act. If the person prevails, the court shall award the person reasonable attorney's fees and costs of suit.

NEW SECTION. Sec. 10. If any provision of this act or its application to any person or circumstance is held invalid, the remainder of the act or the application of the provision to other persons or circumstances is not affected.

PLEASE NOTE:

In the preceding and following measures, all words in double brackets with a line through them are in the State Law at the present time and are being taken out by the measure. All words underlined do not appear in the State Law as they are now written but will be put in if the measure is adopted.

To obtain a copy of the preceding and following texts for the state measures in larger print, call the Secretary of State's toll-free hotline -- 1-800-448-4881.



**COMPLETE TEXT OF
Initiative Measure 134**

AN ACT Relating to the regulation of political contributions and campaign expenditures; amending RCW 42.17.095, 42.17.125, 42.17.510, 41.04.230, 42.17.180, 42.17.390, and 42.17.240; adding new sections to chapter 42.17 RCW; creating new sections; repealing RCW 42.17.243; and prescribing penalties.

BE IT ENACTED BY THE PEOPLE OF THE STATE OF WASHINGTON:

**PART I
FINDINGS AND INTENT**

NEW SECTION. Sec. 1. FINDINGS. The people of the state of Washington find and declare that:

(1) The financial strength of certain individuals or organizations should not permit them to exercise a disproportionate or controlling influence on the election of candidates.

(2) Rapidly increasing political campaign costs have led many candidates to raise larger percentages of money from special interests with a specific financial stake in matters before state government. This has caused the public perception that decisions of elected officials are being improperly influenced by monetary contributions.

(3) Candidates are raising less money in small contributions from individuals and more money from special interests. This has created the public perception that individuals have an insignificant role to play in the political process.

NEW SECTION. Sec. 2. INTENT. By limiting campaign contributions, the people intend to:

(1) Ensure that individuals and interest groups have fair and equal opportunity to influence elective and governmental processes;

(2) Reduce the influence of large organizational contributors; and

(3) Restore public trust in governmental institutions and the electoral process.

**PART II
DEFINITIONS**

NEW SECTION. Sec. 3. DEFINITIONS. The definitions of RCW 42.17.020 apply to sections 4 through 19 of this act except as modified by this section. Unless the context clearly requires otherwise, the definitions in this section apply throughout sections 4 through 19 of this act.

(1) "Authorized committee" means the political committee authorized by a candidate, or by the state official against whom recall charges have been filed, to accept



COMPLETE TEXT OF Initiative Measure 134 (con't.)

contributions or make expenditures on behalf of the candidate or state official.

(2) "Bona fide political party" means:

(a) An organization that has filed a valid certificate of nomination with the secretary of state under chapter 29.24 RCW; or

(b) The governing body of the state organization of a major political party, as defined in RCW 29.01.090, which is the body authorized by the charter or bylaws of the party to exercise authority on behalf of the state party; or

(c) The county central committee or legislative district committee of a major political party.

(3) "Candidate" means an individual seeking nomination for election or seeking election to a state office. An individual is deemed to be seeking nomination for election or seeking election when the individual first:

(a) Announces publicly or files for the office;

(b) Purchases commercial advertising space or broadcast time to promote his or her candidacy;

(c) Receives contributions or makes expenditures for facilities with intent to promote his or her candidacy for the office; or

(d) Gives his or her consent to another person to take on behalf of the individual any of the actions in (b) or (c) of this subsection.

(4) "Caucus of the state legislature" means the caucus of members of a major political party in the state house of representatives or in the state senate.

(5)(a) "Contribution" includes a loan, gift, deposit, subscription, forgiveness of indebtedness, donation, advance, pledge, payment, transfer of funds between political committees, or transfer of anything of value, including personal and professional services for less than full consideration.

(b) Subject to further definition by the commission, "contribution" does not include the following:

(i) Interest on money deposited in a political committee's account;

(ii) Ordinary home hospitality;

(iii) A contribution received by a candidate or political committee that is returned to the contributor within five business days of the date on which it is received by the candidate or political committee;

(iv) An expenditure or contribution earmarked for voter registration, for absentee ballot information, for precinct caucuses, for get-out-the-vote campaigns, for precinct judges or inspectors, for sample ballots, or for ballot counting, all without promotion of or political advertising for individual candidates;

(v) A news item, feature, commentary, or editorial in a regularly scheduled news medium that is of primary interest

to the general public, that is in a news medium controlled by a person whose primary business is that news medium, and that is not controlled by a candidate or political committee;

(vi) An expenditure by a political committee for its own internal organization or fund raising without direct association with individual candidates;

(vii) An internal political communication primarily limited to the contributors to a political party organization or political action committee, or the officers, management staff, and stockholders of a corporation or similar enterprise, or the members of a labor organization or other membership organization;

(viii) The rendering of personal services of the sort commonly performed by volunteer campaign workers, or incidental expenses personally incurred by volunteer campaign workers not in excess of fifty dollars personally paid for by the worker. "Volunteer services," for the purposes of this section, means services or labor for which the individual is not compensated by any person and that are performed outside the individual's normal working hours; or

(ix) Legal or accounting services rendered to or on behalf of:

(A) A political party or caucus of the state legislature if the person paying for the services is the regular employer of the person rendering such services; or

(B) A candidate or an authorized committee if the person paying for the services is the regular employer of the individual rendering the services and if the services are solely for the purpose of ensuring compliance with state election or public disclosure laws.

(c) Contributions other than money or its equivalent are deemed to have a monetary value equivalent to the fair market value of the contribution.

(d) Sums paid for tickets to fund-raising events such as dinners and parties are contributions, except for the actual cost of the consumables furnished at the event.

(e) An expenditure made by a person in cooperation, consultation, or concert with, or at the request or suggestion of, a candidate, a political committee, or their agents, is considered to be a contribution to such candidate or political committee.

(f) The financing by a person of the dissemination, distribution, or republication, in whole or in part, of broadcast, written, graphic, or other form of political advertising prepared by a candidate, a political committee, or its authorized agent, is considered to be a contribution to the candidate or political committee.

(6) "Election" means a primary or a general or special election in which a candidate is on the ballot.

(7) "Election cycle" means the period beginning on the first day of December after the date of the last previous general election for the office that the candidate seeks and ending on November 30th after the next election for the office. In the case of a special election to fill a vacancy in an office, "election cycle" means the period beginning on the day the vacancy occurs and ending on November 30th after



COMPLETE TEXT OF Initiative Measure 134 (con't.)

the special election.

(8) "General election" means the election that results in the election of a person to a state office. It does not include a primary.

(9) "Immediate family" means a candidate's spouse, and any child, stepchild, grandchild, parent, stepparent, grandparent, brother, half-brother, sister, or half-sister of the candidate and the spouse of any such person and any child, stepchild, grandchild, parent, stepparent, grandparent, brother, half-brother, sister, or half-sister of the candidate's spouse and the spouse of any such person.

(10) "Independent expenditure" means an "expenditure" as defined in RCW 42.17.020 that has each of the following elements:

(a) It is made in support of or in opposition to a candidate for office by a person who is not (i) a candidate for that office, (ii) an authorized committee of that candidate for that office, (iii) a person who has received the candidate's encouragement or approval to make the expenditure, if the expenditure pays in whole or in part for any political advertising supporting that candidate or promoting the defeat of any other candidate or candidates for that office, or (iv) a person with whom the candidate has collaborated for the purpose of making the expenditure, if the expenditure pays in whole or in part for any political advertising supporting that candidate or promoting the defeat of any other candidate or candidates for that office;

(b) The expenditure pays in whole or in part for any political advertising that either specifically names the candidate supported or opposed, or clearly and beyond any doubt identifies the candidate without using the candidate's name; and

(c) The expenditure, alone or in conjunction with another expenditure or other expenditures of the same person in support of or opposition to that candidate, has a value of five hundred dollars or more. A series of expenditures, each of which is under five hundred dollars, constitutes one independent expenditure if their cumulative value is five hundred dollars or more.

(11)(a) "Intermediary" means an individual who transmits a contribution to a candidate or committee from another person unless the contribution is from the individual's employer, immediate family, or an association to which the individual belongs.

(b) A treasurer or a candidate is not an intermediary for purpose of the committee that the treasurer or candidate serves.

(c) A professional fund raiser is not an intermediary if the fund raiser is compensated for fund-raising services at the usual and customary rate.

(d) A volunteer hosting a fund-raising event at the individual's home is not an intermediary for purposes of that event.

(12) "Person" includes:

(a) An individual;

(b) A partnership, limited partnership, public or private corporation, or joint venture;

(c) A nonprofit corporation, organization, or association, including but not limited to, a national, state, or local labor union or collective bargaining organization and a national, state, or local trade or professional association;

(d) A federal, state, or local governmental entity or agency, however constituted;

(e) A candidate, committee, political committee, bona fide political party, or executive committee thereof; and

(f) Any other organization or group of persons, however organized.

(13) "Primary" means the procedure for nominating a candidate to state office under chapter 29.18 or 29.21 RCW or any other primary for an election which uses, in large measure, the procedures established in chapter 29.18 or 29.21 RCW.

(14) "Recall campaign" means the period of time beginning on the date of the filing of recall charges under RCW 29.82.015 and ending thirty days after the recall election.

(15) "State legislative office" means the office of a member of the state house of representatives and the office of a member of the state senate.

(16) "State office" means state legislative office or the office of governor, lieutenant governor, secretary of state, attorney general, commissioner of public lands, insurance commissioner, superintendent of public instruction, state auditor, or state treasurer.

(17) "State official" means a person who holds a state office.

PART III CONTRIBUTIONS

NEW SECTION. Sec. 4. CAMPAIGN CONTRIBUTION LIMITS. (1) No person, other than a bona fide political party or a caucus of the state legislature, may make contributions to a candidate for a state legislative office that in the aggregate exceed five hundred dollars or to a candidate for a state office other than a state legislative office that in the aggregate exceed one thousand dollars for each election in which the candidate is on the ballot or appears as a write-in candidate. Contributions made with respect to a primary may not be made after the date of the primary. Contributions made with respect to a general election may not be made after the final day of the applicable election cycle.

(2) No person, other than a bona fide political party or a caucus of the state legislature, may make contributions to a state official against whom recall charges have been filed, or to a political committee having the expectation of making expenditures in support of the recall of the state official,



COMPLETE TEXT OF Initiative Measure 134 (con't.)

during a recall campaign that in the aggregate exceed five hundred dollars if for a state legislative office or one thousand dollars if for a state office other than a state legislative office.

(3)(a) Notwithstanding subsection (1) of this section, no bona fide political party or caucus of the state legislature may make contributions to a candidate during an election cycle that in the aggregate exceed (i) fifty cents multiplied by the number of eligible registered voters in the jurisdiction from which the candidate is elected if the contributor is a caucus of the state legislature or the governing body of a state organization, or (ii) twenty-five cents multiplied by the number of registered voters in the jurisdiction from which the candidate is elected if the contributor is a county central committee or a legislative district committee.

(b) No candidate may accept contributions from a county central committee or a legislative district committee during an election cycle that when combined with contributions from other county central committees or legislative district committees would in the aggregate exceed twenty-five cents times the number of registered voters in the jurisdiction from which the candidate is elected.

(4)(a) Notwithstanding subsection (2) of this section, no bona fide political party or caucus of the state legislature may make contributions to a state official against whom recall charges have been filed, or to a political committee having the expectation of making expenditures in support of the state official, during a recall campaign that in the aggregate exceed (i) fifty cents multiplied by the number of eligible registered voters in the jurisdiction entitled to recall the state official if the contributor is a caucus of the state legislature of the governing body of a state organization, or (ii) twenty-five cents multiplied by the number of registered voters in the jurisdiction from which the candidate is elected if the contributor is a county central committee or a legislative district committee.

(b) No state official against whom recall charges have been filed, no authorized committee of the official, and no political committee having the expectation of making expenditures in support of the recall of a state official may accept contributions from a county central committee or a legislative district committee or a legislative district committee during an election cycle that when combined with contributions from other county central committees or legislative district committees would in the aggregate exceed twenty-five cents multiplied by the number of registered voters in the jurisdiction from which the candidate is elected.

(5) Notwithstanding subsections (1) through (4) of this section, no person other than an individual, bona fide political party, or caucus of the state legislature may make contributions reportable under this chapter to a caucus of the

state legislature that in the aggregate exceed five hundred dollars in a calendar year or to a bona fide political party that in the aggregate exceed two thousand five hundred dollars in a calendar year. This subsection does not apply to loans made in the ordinary course of business.

(6) For the purposes of sections 4 through 19 of this act, a contribution to the authorized political committee of a candidate, or of a state official against whom recall charges have been filed, is considered to be a contribution to the candidate or state official.

(7) A contribution received within the twelve-month period after a recall election concerning a state office is considered to be a contribution during that recall campaign if the contribution is used to pay a debt or obligation incurred to influence the outcome of that recall campaign.

(8) The contributions allowed by subsection (2) of this section are in addition to those allowed by subsection (1) of this section, and the contributions allowed by subsection (4) of this section are in addition to those allowed by subsection (3) of this section.

(9) Sections 4 through 19 of this act apply to a special election conducted to fill a vacancy in a state office. However, the contributions made to a candidate or received by a candidate for a primary or special election conducted to fill such a vacancy shall not be counted toward any of the limitations that apply to the candidate or to contributions made to the candidate for any other primary or election.

(10) Notwithstanding the other subsections of this section, no corporation or business entity not doing business in Washington state, no labor union with fewer than ten members who reside in Washington state, and no political committee that has not received contributions of ten dollars or more from at least ten persons registered to vote in Washington state during the preceding one hundred eighty days may make contributions reportable under this chapter to a candidate, to a state official against whom recall charges have been filed, or to a political committee having the expectation of making expenditures in support of the recall of the official. This subsection does not apply to loans made in the ordinary course of business.

(11) Notwithstanding the other subsections of this section, no county central committee or legislative district committee may make contributions reportable under this chapter to a candidate, state official against whom recall charges have been filed, or political committee having the expectation of making expenditures in support of the recall of a state official if the county central committee or legislative district committee is outside of the jurisdiction entitled to elect the candidate or recall the state official.

(12) No person may accept contributions that exceed the contribution limitations provided in this section.

NEW SECTION. Sec. 5. **ATTRIBUTION AND AGGREGATION OF FAMILY CONTRIBUTIONS.** (1) Contributions by a husband and wife are considered separate contributions.



COMPLETE TEXT OF Initiative Measure 134 (con't.)

(2) Contributions by unemancipated children under eighteen years of age are considered contributions by their parents and are attributed proportionately to each parent. Fifty percent of the contributions are attributed to each parent or, in the case of a single custodial parent, the total amount is attributed to the parent.

NEW SECTION. Sec. 6. **ATTRIBUTION OF CONTRIBUTIONS BY CONTROLLED ENTITIES.** For purposes of this chapter:

(1) A contribution by a political committee with funds that have all been contributed by one person who exercises exclusive control over the distribution of the funds of the political committee is a contribution by the controlling person.

(2) Two or more entities are treated as a single entity if one of the two or more entities is a subsidiary, branch, or department of a corporation or a local unit, branch, or affiliate of a trade association, labor union, or collective bargaining association. All contributions made by a person or political committee whose contribution or expenditure activity is financed, maintained, or controlled by a trade association, labor union, collective bargaining organization, or the local unit of a trade association, labor union, or collective bargaining organization are considered made by the same person or entity.

NEW SECTION. Sec. 7. **ATTRIBUTION OF CONTRIBUTIONS.** All contributions made by a person or entity, either directly or indirectly, to a candidate, to a state official against whom recall charges have been filed, or to a political committee, are considered to be contributions from that person or entity to the candidate, state official, or political committee, as are contributions that are in any way earmarked or otherwise directed through an intermediary or conduit to the candidate, state official, or political committee. For the purposes of this section, "earmarked" means a designation, instruction, or encumbrance, whether direct or indirect, expressed or implied, or oral or written, that is intended to result in or does result in all or any part of a contribution being made to a certain candidate or state official. If a conduit or intermediary exercises any direction or control over the choice of the recipient candidate or state official, the contribution is considered to be by both the original contributor and the conduit or intermediary.

NEW SECTION. Sec. 8. **LIMITATIONS ON EMPLOYERS OR LABOR ORGANIZATIONS.** (1) No employer or labor organization may increase the salary of an officer or employee, or give an emolument to an officer, employee, or

other person or entity, with the intention that the increase in salary, or the emolument, or a part of it, be contributed or spent to support or oppose a candidate, state official against whom recall charges have been filed, political party, or political committee.

(2) No employer or labor organization may discriminate against an officer or employee in the terms or conditions of employment for (a) the failure to contribute to, (b) the failure in any way to support or oppose, or (c) in any way supporting or opposing a candidate, ballot proposition, political party, or political committee.

(3) No employer or other person or entity responsible for the disbursement of funds in payment of wages or salaries may withhold or divert a portion of an employee's wages or salaries for contributions to political committees or for use as political contributions except upon the written request of the employee. The request must be made on a form prescribed by the commission informing the employee of the prohibition against employer and labor organization discrimination described in subsection (2) of this section. The request is valid for no more than twelve months from the date it is made by the employee.

(4) Each person or entity who withholds contributions under subsection (3) of this section shall maintain open for public inspection for a period of no less than three years, during normal business hours, documents and books of accounts that shall include a copy of each employee's request, the amounts and dates funds were actually withheld, and the amounts and dates funds were transferred to a political committee. Copies of such information shall be delivered to the commission upon request.

NEW SECTION. Sec. 9. **CHANGING MONETARY LIMITS.** At the beginning of each even-numbered calendar year, the commission shall increase or decrease all dollar amounts in this chapter based on changes in economic conditions as reflected in the inflationary index used by the commission under RCW 42.17.370. The new dollar amounts established by the commission under this section shall be rounded off by the commission to amounts as judged most convenient for public understanding and so as to be within ten percent of the target amount equal to the base amount provided in this chapter multiplied by the increase in the inflationary index since the effective date of this act.

NEW SECTION. Sec. 10. **CONTRIBUTIONS FROM BEFORE EFFECTIVE DATE OF ACT.** Contributions made and received before the effective date of this act are considered to be contributions under sections 4 through 19 of this act. Monetary contributions that exceed the contribution limitations and that have not been spent by the recipient of the contribution by the effective date of this act must be disposed of in accordance with RCW 42.17.095.

NEW SECTION. Sec. 11. **TIME LIMIT FOR STATE**



COMPLETE TEXT OF Initiative Measure 134 (con't.)

OFFICIAL TO SOLICIT OR ACCEPT CONTRIBUTIONS. During the period beginning on the thirtieth day before the date a regular legislative session convenes and continuing thirty days past the date of final adjournment, and during the period beginning on the date a special legislative session convenes and continuing through the date that session adjourns, no state official or a person employed by or acting on behalf of a state official or state legislator may solicit or accept contributions to a public office fund, to a candidate or authorized committee, or to retire a campaign debt.

NEW SECTION. Sec. 12. RESTRICTION ON LOANS.

(1) A loan is considered to be a contribution from the maker and the guarantor of the loan and is subject to the contribution limitations of this chapter.

(2) A loan to a candidate or the candidate committee must be by written agreement.

(3) The proceeds of a loan made to a candidate:

(a) By a commercial lending institution;

(b) Made in the regular course of business;

(c) On the same terms ordinarily available to members of the public; and

(d) That is secured or guaranteed,
are not subject to the contribution limits of this chapter.

NEW SECTION. Sec. 13. CONTRIBUTIONS ON BEHALF OF ANOTHER. (1) A person, other than an individual, may not be an intermediary or an agent for a contribution.

(2) An individual may not make a contribution on behalf of another person or entity, or while acting as the intermediary or agent of another person or entity, without disclosing to the recipient of the contribution both his or her full name, street address, occupation, name of employer, if any, or place of business if self-employed, and the same information for each contributor for whom the individual serves as intermediary or agent.

NEW SECTION. Sec. 14. CERTAIN CONTRIBUTIONS REQUIRED TO BE BY WRITTEN INSTRUMENT. (1) An individual may not make a contribution of more than fifty dollars, other than an in-kind contribution, except by a written instrument containing the name of the donor and the name of the payee.

(2) A committee may not make a contribution, other than in-kind, except by a written instrument containing the name of the donor and the name of the payee.

NEW SECTION. Sec. 15. SOLICITATION OF CONTRIBUTIONS BY GOVERNMENT EMPLOYEES. (1) No state official or state official's agent may knowingly solicit, di-

rectly or indirectly, a contribution from an employee in the state official's agency.

(2) No state official or state employee may provide an advantage or disadvantage to an employee or applicant for employment in the classified civil service concerning the applicant's or employee's:

(a) Employment;

(b) Conditions of employment; or

(c) Application for employment,
based on the employee's or applicant's contribution or promise to contribute or failure to make a contribution or contribute to a political party or committee.

NEW SECTION. Sec. 16. AGENCY SHOP FEES AS CONTRIBUTIONS. A labor organization may not use agency shop fees paid by an individual who is not a member of the organization to make contributions or expenditures to influence an election or to operate a political committee, unless affirmatively authorized by the individual.

NEW SECTION. Sec. 17. SOLICITATION FOR ENDORSEMENT FEES. A person or entity may not solicit from a candidate, committee, political party, or other person or entity money or other property as a condition or consideration for an endorsement, article, or other communication in the news media promoting or opposing a candidate, committee, or political party.

NEW SECTION. Sec. 18. REIMBURSEMENT FOR CONTRIBUTIONS. A person or entity may not, directly or indirectly, reimburse another person or entity for a contribution to a candidate, committee, or political party.

NEW SECTION. Sec. 19. PROHIBITION ON USE OF CONTRIBUTIONS FOR A DIFFERENT OFFICE. (1) Except as provided in subsection (2) of this section, a candidate committee may not use or permit the use of contributions solicited for or received by the candidate committee to further the candidacy of the individual for an office other than the office designated on the statement of organization. A contribution solicited for or received on behalf of the candidate is considered solicited or received for the candidacy for which the individual is then a candidate if the contribution is solicited or received before the general elections for which the candidate is a nominee or is unopposed.

(2) With the written approval of the contributor, a candidate committee may use or permit the use of contributions solicited for or received by the candidate committee from that contributor to further the candidacy of the individual for an office other than the office designated on the statement of organization.

Sec. 20. TRANSFER OF FUNDS--USE OF FUNDS FOR OTHER OFFICE ELIMINATED. RCW 42.17.095 and 1982 c 147 s 8 are each amended to read as follows:



COMPLETE TEXT OF Initiative Measure 134 (con't.)

The surplus funds of a candidate, or of a political committee supporting or opposing a candidate, may only be disposed of in any one or more of the following ways:

(1) Return the surplus to a contributor in an amount not to exceed that contributor's original contribution;

(2) Transfer the surplus to the candidate's personal account as reimbursement for lost earnings incurred as a result of that candidate's election campaign. Such lost earnings shall be verifiable as unpaid salary or, when the candidate is not salaried, as an amount not to exceed income received by the candidate for services rendered during an appropriate, corresponding time period. All lost earnings incurred shall be documented and a record thereof shall be maintained by the candidate or the candidate's political committee. The committee shall include a copy of such record when its expenditure for such reimbursement is reported pursuant to RCW 42.17.090;

(3) Transfer the surplus to ~~((one or more candidates or to))~~ a political ~~((committee or))~~ party or to a caucus of the state legislature;

(4) Donate the surplus to a charitable organization registered in accordance with chapter 19.09 RCW;

(5) Transmit the surplus to the state treasurer for deposit in the general fund; or

(6) Hold the surplus in the campaign depository or depositories designated in accordance with RCW 42.17.050 for possible use in a future election campaign ~~((for political activity, for community activity, or for nonreimbursed public office related expenses))~~ for the same office last sought by the candidate and report any such disposition in accordance with RCW 42.17.090: PROVIDED, That if the candidate subsequently announces or publicly files for office, information as appropriate is reported to the commission in accordance with RCW 42.17.040 through 42.17.090. If a subsequent office is not sought the surplus held shall be disposed of in accordance with the requirements of this section.

(7) No candidate or authorized committee may transfer funds to any other candidate or other political committee.

Sec. 21. CANDIDATE PERSONAL FUND LOANS LIMITED. RCW 42.17.125 and 1989 c 280 s 12 are each amended to read as follows:

Contributions received and reported in accordance with RCW 42.17.060 through 42.17.090 may only be transferred to the personal account of a candidate, or of a treasurer or other individual or expended for such individual's personal use under the following circumstances:

(1) Reimbursement for or loans to cover lost earnings incurred as a result of campaigning or services performed for

the committee. Such lost earnings shall be verifiable as unpaid salary, or when the individual is not salaried, as an amount not to exceed income received by the individual for services rendered during an appropriate, corresponding time period. All lost earnings incurred shall be documented and a record thereof shall be maintained by the individual or the individual's political committee. The committee shall include a copy of such record when its expenditure for such reimbursement is reported pursuant to RCW 42.17.090.

(2) Reimbursement for direct out-of-pocket election campaign and postelection campaign related expenses made by the individual. To receive reimbursement from the political committee, the individual shall provide the committee with written documentation as to the amount, date, and description of each expense, and the committee shall include a copy of such information when its expenditure for such reimbursement is reported pursuant to RCW 42.17.090.

(3) Repayment of loans made by the individual to political committees, which repayment shall be reported pursuant to RCW 42.17.090. However, contributions may not be used to reimburse a candidate for loans totaling more than three thousand dollars made by the candidate to the candidate's own authorized committee or campaign.

-PART IV- INDEPENDENT EXPENDITURES

Sec. 22. INDEPENDENT EXPENDITURE ADVERTISING DISCLOSURE. RCW 42.17.510 and 1984 c 216 s 1 are each amended to read as follows:

(1) All written political advertising, whether relating to candidates or ballot propositions, shall include the sponsor's name and address. All radio and television political advertising, whether relating to candidates or ballot propositions, shall include the sponsor's name. The use of an assumed name shall be unlawful. The party with which a candidate files shall be clearly identified in political advertising for partisan office.

(2) In addition to the materials required by subsection (1) of this section, all political advertising undertaken as an independent expenditure by a person or entity other than a party organization must include the following statement on the communication "NOTICE TO VOTERS (Required by law): This advertisement is not authorized or approved by any candidate. It is paid for by (name, address, city, state)." If the advertisement is undertaken by a nonindividual, then the following notation must also be included: "Top Five Contributors," followed by a listing of the names of the five persons or entities making the largest contributions reportable under this chapter during the twelve-month period before the date of the advertisement.

(3) The statements and listings of contributors required by subsections (1) and (2) of this section shall:

(a) Appear on each page or fold of the written communication in at least ten-point type, or in type at least ten percent of the largest size type used in a written communi-



COMPLETE TEXT OF Initiative Measure 134 (con't.)

cation directed at more than one voter, such as a billboard or poster, whichever is larger;

(b) Not be subject to the half-tone or screening process;

(c) Be in a printed or drawn box set apart from any other printed matter; and

(d) Be clearly spoken on any broadcast advertisement.

(4) Political yard signs are exempt from the requirement of subsections (1) and (2) of this section that the name and address of the sponsor of political advertising be listed on the advertising. In addition, the public disclosure commission shall, by rule, exempt from the identification requirements of subsections (1) and (2) of this section forms of political advertising such as campaign buttons, balloons, pens, pencils, sky-writing, inscriptions, and other forms of advertising where identification is impractical.

((3)) (5) For the purposes of this section, "yard sign" means any outdoor sign with dimensions no greater than eight feet by four feet.

NEW SECTION. Sec. 23. INDEPENDENT EXPENDITURE DISCLOSURE. A person or entity other than a party organization making an independent expenditure by mailing one thousand or more identical or nearly identical cumulative pieces of political advertising in a single calendar year shall, within two working days after the date of the mailing, file a statement disclosing the number of pieces in the mailing and an example of the mailed political advertising with the election officer of the county or residence for the candidate supported or opposed by the independent campaign expenditure or, in the case of an expenditure made in support of or in opposition to a ballot proposition, the county of residence for the person making the expenditure.

PART V

USE OF PUBLIC FUNDS OR OFFICE FOR POLITICAL PURPOSES

NEW SECTION. Sec. 24. Public funds, whether derived through taxes, fees, penalties, or any other sources, shall not be used to finance political campaigns for state or local office.

NEW SECTION. Sec. 25. FRANKING PRIVILEGE LIMITED. During the twelve-month period preceding the expiration of a state legislator's term in office, no incumbent to that office may mail to a constituent at public expense a letter, newsletter, brochure, or other piece of literature that is not in direct response to that constituent's request for a response or for information. However, one mailing mailed within thirty days after the start of a regular legislative session

and one mailing mailed within sixty days after the end of a regular legislative session of identical newsletters to constituents are permitted. A violation of this section constitutes use of the facilities of a public office for the purpose of assisting a campaign under RCW 42.17.130.

The house of representatives and senate shall specifically limit expenditures per member for the total cost of mailings, including but not limited to production costs, printing costs, and postage.

Sec. 26. STATE PAYROLL POLITICAL CHECK-OFF ELIMINATED. RCW 41.04.230 and 1988 c 107 s 19 are each amended to read as follows:

Any official of the state authorized to disburse funds in payment of salaries and wages of public officers or employees is authorized, upon written request of the officer or employee, to deduct from the salaries or wages of the officers or employees, the amount or amounts of subscription payments, premiums, contributions, or continuation thereof, for payment of the following:

(1) Credit union deductions: PROVIDED, That the credit union is organized solely for public employees: AND PROVIDED FURTHER, That twenty-five or more employees of a single state agency or a total of one hundred or more state employees of several agencies have authorized such a deduction for payment to the same credit union.

(2) Parking fee deductions: PROVIDED, That payment is made for parking facilities furnished by the agency or by the department of general administration.

(3) U.S. savings bond deductions: PROVIDED, That a person within the particular agency shall be appointed to act as trustee. The trustee will receive all contributions; purchase and deliver all bond certificates; and keep such records and furnish such bond or security as will render full accountability for all bond contributions.

(4) Board, lodging or uniform deductions when such board, lodging and uniforms are furnished by the state, or deductions for academic tuitions or fees or scholarship contributions payable to the employing institution.

(5) Dues and other fees deductions: PROVIDED, That the deduction is for payment of membership dues to any professional organization formed primarily for public employees or college and university professors: AND PROVIDED, FURTHER, That twenty-five or more employees of a single state agency, or a total of one hundred or more state employees of several agencies have authorized such a deduction for payment to the same professional organization.

(6) Labor or employee organization dues may be deducted in the event that a payroll deduction is not provided under a collective bargaining agreement under the provisions of RCW 41.06.150: PROVIDED, That twenty-five or more officers or employees of a single agency, or a total of one hundred or more officers or employees of several agencies have authorized such a deduction for payment to the same labor or employee organization: PROVIDED, FURTHER, That labor or employee organizations with five hundred or



COMPLETE TEXT OF Initiative Measure 134 (con't.)

more members in state government may have payroll deduction for employee benefit programs.

~~(7) (Voluntary deductions for political committees duly registered with the public disclosure commission and/or the federal election commission: PROVIDED, That twenty-five or more officers or employees of a single agency or a total of one hundred or more officers or employees of several agencies have authorized such a deduction for payment to the same political committee.~~

~~(8)) Insurance contributions to the authority for payment of premiums under contracts authorized by the state health care authority.~~

Deductions from salaries and wages of public officers and employees other than those enumerated in this section or by other law, may be authorized by the director of financial management for purposes clearly related to state employment or goals and objectives of the agency and for plans authorized by the state health care authority.

The authority to make deductions from the salaries and wages of public officers and employees as provided for in this section shall be in addition to such other authority as may be provided by law: PROVIDED, That the state or any department, division, or separate agency of the state shall not be liable to any insurance carrier or contractor for the failure to make or transmit any such deduction.

PART VI POLITICAL EXPENDITURE AND CONTRIBUTION REPORTING

Sec. 27. INDEPENDENT EXPENDITURE ANNUAL REPORTING. RCW 42.17.180 and 1990 c 139 s 4 are each amended to read as follows:

(1) Every employer of a lobbyist registered under this chapter during the preceding calendar year and every person other than an individual that made contributions aggregating to more than ten thousand dollars or independent expenditures aggregating to more than five hundred dollars during the preceding calendar year shall file with the commission on or before ~~((March 31st))~~ the last day of February of each year a statement disclosing for the preceding calendar year the following information:

(a) The name of each state elected official and the name of each candidate for state office who was elected to the office and any member of the immediate family of those persons to whom the ~~((employer))~~ person reporting has paid any compensation in the amount of five hundred dollars or more during the preceding calendar year for personal employment or professional services, including professional services rendered by a corporation, partnership, joint ven-

ture, association, union, or other entity in which the person holds any office, directorship, or any general partnership interest, or an ownership interest of ten percent or more, the value of the compensation in accordance with the reporting provisions set out in RCW 42.17.241(2), and the consideration given or performed in exchange for the compensation.

(b) The name of each state elected official, successful candidate for state office, or members of his immediate family to whom the ~~((lobbyist employer))~~ person reporting made expenditures, directly or indirectly, either through a lobbyist or otherwise, the amount of the expenditures and the purpose for the expenditures. For the purposes of this subsection, the term expenditure shall not include any expenditure made by the employer in the ordinary course of business if the expenditure is not made for the purpose of influencing, honoring, or benefiting the elected official, successful candidate, or member of his immediate family, as an elected official or candidate.

(c) The total expenditures made by the ~~((employer))~~ person reporting for lobbying purposes, whether through or on behalf of a registered lobbyist or otherwise.

(d) All contributions made to a ~~((candidate for state office, to a))~~ political committee supporting or opposing a candidate for state office, or to a political committee supporting or opposing a state-wide ballot proposition. Such contributions shall be identified by the name and the address of the recipient and the aggregate amount contributed to each such recipient.

(e) The name and address of each registered lobbyist employed by the ~~((employer))~~ person reporting and the total expenditures made by ~~((the employer))~~ such person for each such lobbyist for lobbying purposes.

(f) The names, offices sought, and party affiliations of candidates for state offices supported or opposed by independent expenditures of the person reporting and the amount of each such expenditure.

(g) The identifying proposition number and a brief description of any state-wide ballot proposition supported or opposed by expenditures not reported under (d) of this subsection and the amount of each such expenditure.

(h) Such other information as the commission prescribes by rule.

(2)(a) Except as provided in (b) of this subsection, an employer of a lobbyist registered under this chapter shall file a special report with the commission if the employer makes a contribution or contributions aggregating more than one hundred dollars in a calendar month to any one of the following: A candidate, elected official, officer or employee of an agency, or political committee. The report shall identify the date and amount of each such contribution and the name of the candidate, elected official, agency officer or employee, or political committee receiving the contribution or to be benefited by the contribution. The report shall be filed on a form prescribed by the commission and shall be filed within fifteen days after the last day of the calendar



COMPLETE TEXT OF Initiative Measure 134 (con't.)

month during which the contribution was made.

(b) The provisions of (a) of this subsection do not apply to a contribution which is made through a registered lobbyist and reportable under RCW 42.17.170.

PART VII PENALTIES

Sec. 28. PENALTIES. RCW 42.17.390 and 1973 c 1 s 39 are each amended to read as follows:

~~((a))~~ One or more of the following civil remedies and sanctions may be imposed by court order in addition to any other remedies provided by law:

~~((a))~~ (1) If the court finds that the violation of any provision of this chapter by any candidate or political committee probably affected the outcome of any election, the result of said election may be held void and a special election held within sixty days of such finding. Any action to void an election shall be commenced within one year of the date of the election in question. It is intended that this remedy be imposed freely in all appropriate cases to protect the right of the electorate to an informed and knowledgeable vote.

~~((b))~~ (2) If any lobbyist or sponsor of any grass roots lobbying campaign violates any of the provisions of this chapter, his registration may be revoked or suspended and he may be enjoined from receiving compensation or making expenditures for lobbying: PROVIDED, HOWEVER, That imposition of such sanction shall not excuse said lobbyist from filing statements and reports required by this chapter.

~~((c))~~ (3) Any person who violates any of the provisions of this chapter may be subject to a civil penalty of not more than ten thousand dollars for each such violation. However, a person or entity who violates section 4 of this act may be subject to a civil penalty of ten thousand dollars or three times the amount of the contribution illegally made or accepted, whichever is greater.

~~((d))~~ (4) Any person who fails to file a properly completed statement or report within the time required by this chapter may be subject to a civil penalty of ten dollars per day for each day each such delinquency continues.

~~((e))~~ (5) Any person who fails to report a contribution or expenditure may be subject to a civil penalty equivalent to the amount he failed to report.

~~((f))~~ (6) The court may enjoin any person to prevent the doing of any act herein prohibited, or to compel the performance of any act required herein.

PART VIII PUBLIC DISCLOSURE COMMISSION

NEW SECTION. Sec. 29. COMMISSION AUDITS. The commission shall conduct a sufficient number of audits and field investigations so as to provide a statistically valid finding regarding the degree of compliance with the provisions of this chapter by all required filers.

PART IX GIFTS

NEW SECTION. Sec. 30. DEFINITIONS. Unless the context clearly requires otherwise, the definitions in this section apply throughout this chapter.

(1) "Benefit" means a commercial, proprietary, financial, economic, or monetary advantage, or the avoidance of a commercial, proprietary, financial, economic, or monetary disadvantage.

(2) "Gift" means a rendering of money, property, services, discount, loan forgiveness, payment of indebtedness, reimbursements from or payments by persons, other than the state of Washington or an agency or political subdivision thereof, for travel or anything else of value in excess of fifty dollars in return for which legal consideration of equal or greater value is not given and received but does not include:

(a) A contribution that is required to be reported under RCW 42.17.090 or 42.17.243;

(b) Informational material that is transferred for the purpose of informing the recipient about matters pertaining to official agency business, and that is not intended to financially benefit that recipient;

(c) A symbolic presentation that is not intended to financially benefit the recipient;

(d) An honorarium that is required to be reported under this chapter;

(e) Hosting in the form of entertainment, meals, or refreshments, the value of which does not exceed fifty dollars, furnished in connection with official appearances, official ceremonies, and occasions where official agency business is discussed;

(f) Gifts that are not used and that, within thirty days after receipt, are returned to the donor or delivered to a charitable organization without being claimed as a charitable contribution for tax purposes;

(g) Intrafamily gifts; or

(h) Gifts received in the normal course of private business or social interaction that are not related to public policy decisions or agency actions.

Sec. 31. PUBLIC OFFICIAL ANNUAL REPORTING OF "GIFTS." RCW 42.17.240 and 1989 c 158 s 1 are each amended to read as follows:

(1) Every elected official and every executive state officer shall after January 1st and before April 15th of each year file with the commission a statement of financial affairs for the preceding calendar year. However, any local elected official whose term of office expires immediately after December 31st shall file the statement required to be filed by this section



COMPLETE TEXT OF Initiative Measure 134 (con't.)

for the year that ended on that December 31st. In addition to and in conjunction with the statement of financial affairs, every official and officer shall file a statement describing any gifts received during the preceding calendar year.

(2) Every candidate shall within two weeks of becoming a candidate file with the commission a statement of financial affairs for the preceding twelve months.

(3) Every person appointed to a vacancy in an elective office or executive state officer position shall within two weeks of being so appointed file with the commission a statement of financial affairs for the preceding twelve months.

(4) A statement of a candidate or appointee filed during the period from January 1st to April 15th shall cover the period from January 1st of the preceding calendar year to the time of candidacy or appointment if the filing of the statement would relieve the individual of a prior obligation to file a statement covering the entire preceding calendar year.

(5) No individual may be required to file more than once in any calendar year.

(6) Each statement of financial affairs filed under this section shall be sworn as to its truth and accuracy.

(7) For the purposes of this section, the term "executive state officer" includes those listed in RCW 42.17.2401.

(8) This section does not apply to incumbents or candidates for a federal office or the office of precinct committee officer.

NEW SECTION. Sec. 32. LOBBYIST NOTIFICATION OF GIFTS. When a listing or a report of contributions is made to the commission under RCW 42.17.170(2)(c), a copy of the listing or report must be given to the candidate, elected official, professional staff member of the legislature, or officer or employee of an agency, or a political committee supporting or opposing a ballot proposition named in the listing or report.

PART X MISCELLANEOUS

NEW SECTION. Sec. 33. CODIFICATION DIRECTIONS. (1) Sections 1 through 19 of this act are each added to chapter 42.17 RCW as a subchapter and codified with the subchapter heading of "CAMPAIGN CONTRIBUTION LIMITATIONS."

(2) Sections 23 through 25, 29, 30, and 32 of this act are each added to chapter 42.17 RCW.

NEW SECTION. Sec. 34. CAPTIONS. Section captions and part headings used in this act do not constitute any part of the law.

NEW SECTION. Sec. 35. REPEALER. RCW 42.17.243 and 1977 ex.s. c 336 s 5 are each repealed.

NEW SECTION. Sec. 36. SHORT TITLE. This act may be known and cited as the Fair Campaign Practices Act.

LANGUAGE ASSISTANCE

In many instances, assistance can be provided to those who have difficulty reading this pamphlet because their primary language is not English. For more information, call the Secretary of State Voter Information Hotline at 1-800-448-4881.



President and Vice President



**Bill
CLINTON**
Democrat

Campaign Address:
Clinton/Gore '92
1507 3rd Avenue
Seattle, WA 98101
Telephone: (206) 233-9024



**Al
GORE**
Democrat

It's time for a change. It's time to get our economy moving again. Our government has failed our people. For twelve years now, the Republicans have cut taxes for the rich and raised taxes on the rest of us. Good jobs have disappeared. Health care is beyond the reach of millions. Schools have declined. Our streets and neighborhoods are more dangerous. And the Republicans have done nothing.

We can't afford four more years of a President without a vision.

We have a bold new plan to fight for what Americans deserve: good jobs, quality health care, world-class education and safe neighborhoods. Middle-class Americans will finally have leaders who are on their side. We will put people first for a change.

That means reviving our economy. Our plan to rebuild America will create a high-wage, high-skill economy for the post-Cold War era, and give defense workers the transition help they deserve. We'll stop the tax breaks for corporations that ship jobs overseas — but we'll give incentives to those that invest at home. The wealthiest 2 percent will have to pay their fair share — but the middle class will get tax relief. And those on welfare will get the training they need — but after two years they'll have to go to work.

Putting people first means rejecting the false choice between protecting jobs and preserving the environment. America can only achieve a strong economy if we have a clean, safe environment. We will work for both.

Putting people first means making health care a right, not a privilege. We will guarantee affordable, quality care for every American — and take on the health care industry to bring costs down.

Putting people first means educating our people — from the nursery school playground to the factory shop floor. We'll establish tough national standards for K-12 education and reduce class size. We'll make sure high school graduates get the skills they need, and require companies to invest in worker training. And we'll give all Americans the chance to borrow for college — and ask them to serve their communities in return.

Putting people first means standing up for victims and getting tough with criminals. Our plan will put 100,000 new police officers on our streets, and put beat cops back in our neighborhoods. We'll keep handguns out of the hands of criminals. And we'll reduce demand for drugs by increasing treatment and education.

Putting people first means putting everyday Americans back in control of government: fighting the special interests, cutting bureaucracy, and achieving real campaign reform. We will make the tough choices and do what's right.

And putting people first means uniting Americans behind the hope we share — that we can build a better future for our nation. We won't serve the special interests. We will create opportunity and demand responsibility. We won't blame others when we do not succeed. We will work tirelessly for the American people.

We offer real change and new hope. We will put people first for a change.

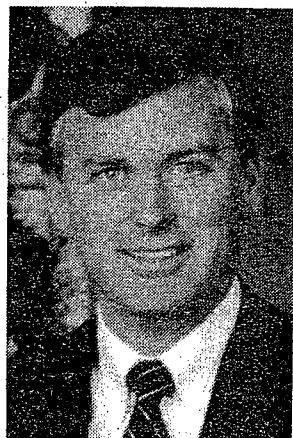
The above statements are an exact reproduction of those submitted by the candidates. The Office of the Secretary of State has no editorial authority.

President and Vice President



**George
BUSH**
Republican

Campaign Address:
Bush-Quayle '92
2821 Northrup Way
Bellevue, WA 98004
Telephone: (206) 889-2874



**Dan
QUAYLE**
Republican

George Bush

In 1980 I came to Washington, D.C. as part of a team committed to restoring American pride and freeing our nation from the politics of malaise. I want to continue that mission:

I will work to get our economy moving at full speed and continue to fight for jobs, low taxes and economic opportunity for every American.

I believe in *traditional* values of family, opportunity, safety, and freedom. I believe changes must be made so parents, not bureaucrats, make the important choices about the education of our children.

I believe we must make changes to restore a government America can be proud of. Government is too big and costs too much.

I will continue to seek a balance between the critical efforts to save the spotted owl while creating jobs and allowing economic prosperity to flourish in the Pacific Northwest.

I will continue my strong commitment to the North America Free Trade Agreement which will create jobs and boost our economy. Washington State exemplifies the significance of this agreement with a 54% increase in exports to Canada between 1987 and 1990.

Together, we won the Cold War and ushered in a new, exciting world. While yesterday's challenges are behind us, tomorrow's are yet to be born.

As someone who served with pride in the Second World War and led this country through Desert Storm, I know we can meet any challenge.

Americans need a president they can trust to shape the hard decisions of tomorrow — someone with the values and experience to guide this great nation through many seasons of change.

I know the pressures and responsibilities of leading America and will devote my energy to reaching these challenges by moving forward, always forward. Together, we will enter the 21st century with progress, prosperity and the promise of a peaceful tomorrow.

Dan Quayle

Today, we maintain our commitment of peace and prosperity with an agenda that addresses the many challenges and opportunities America will face in the future.

- Our agenda is one of decentralization, reform and reducing the role of government in the everyday lives of people.

- We believe in revitalizing education, empowering individuals and communities and *strengthening the family*.

- The Bush Administration is committed to the expansion of American trade.

- When it comes to health care reform and child care programs, we want parents to make the important decisions — *all the decisions*.

- In the battle of over-regulation, our Administration maintains a firm commitment to ending the excessive cost and delay of our civil justice system. Through the Competitiveness Council and regulatory reform efforts, we have brought meaningful change that has yielded \$20 billion in annual savings, creating or saving some *200,000 jobs nationwide*.

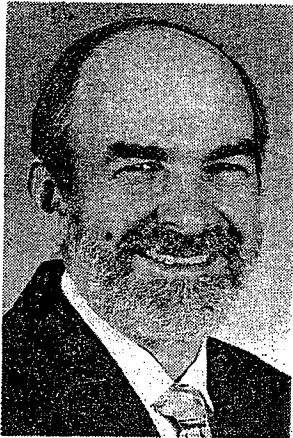
- We believe that the cycle of welfare dependency must be reduced. Our Administration has established new initiatives that get people off welfare rolls and *into jobs*.

Republicans have led the world to freedom and democracy with the end of the Cold War — and we *will lead America to prosperity* during the next four years.

The above statements are an exact reproduction of those submitted by the candidates. The Office of the Secretary of State has no editorial authority.



President and Vice President



**Andre
MARROU**
Libertarian Party



**Nancy
LORD**
Libertarian Party

Campaign Address:
The Marrou/Lord Campaign
1528 Pennsylvania Avenue S.E.
Washington, D.C. 20003
Telephone: (202) 546-6095

Libertarian presidential nominee Representative Andre Marrou (Mah-ROO') believes that Thomas Jefferson's words still ring true in 1992: "That government is best which governs least."

Democrats and Republicans have brought us soaring budgets, tax increases, erosion of our civil liberties, an enormous bureaucracy and interference in the affairs of other nations.

Many government programs have brought counterproductive results. For example, instead of improving the lives of the poor, anti-poverty programs have created generations of welfare families and an expensive welfare bureaucracy.

It's time for a change.

Andre Marrou understands that the best way to create more jobs and increase personal income is to reduce taxes and eliminate burdensome regulations.

Libertarians believe that government should be limited to protecting individuals from force and fraud. Libertarians place a high value on both personal freedom and economic liberty. Regardless of the issue, Libertarians oppose the use of government force against peaceful and honest individuals.

The positions of Andre Marrou are based on the platform of the Libertarian Party. The platform does not change to accommodate the political climate of the day. It is a document based on the principles of individual liberty and private property, which are the foundations of The Declaration of Independence and the Constitution, including the Bill of Rights.

Libertarians favor the privatization of many government services, which usually reduces their costs, improves quality and increases the choices available to consumers.

Andre Marrou supports:

- phasing out the income tax;
- ending the deficit by eliminating wasteful and unnecessary programs;
- ending corporate subsidies;
- having Japan and Germany provide for their own defense;
- holding polluters fully liable for the environmental damage they cause;
- holding violent criminals responsible for their actions;
- a woman's right to choose an abortion, but Marrou opposes government funded abortions;
- tuition tax credits as a step toward reducing costs, improving educational quality and increasing choices for students.

George Bush pledged in 1988: "Read my lips - no new taxes." He lied. Instead, he raised taxes and has given us the largest deficits in history.

Bill Clinton claims to be the candidate of "change." But his party has controlled Congress for decades, and is largely responsible for the financial mess our country is in.

There is an old saying: "If you always do what you've always done, you'll always get what you've always gotten." Do not waste your vote this November.

Vote for Libertarian candidates to demonstrate that you are fed up with the taxes, spending, deficits and bureaucracy imposed upon us by the Democrats and the Republicans. Vote for Andre Marrou and Nancy Lord, the only candidates challenging the status quo.

Andre Marrou was referred to as the "conscience of the legislature" when he served in the Alaska House of Representatives. He has a degree in engineering from MIT and currently works as a real estate broker.

His running mate, Dr. Nancy Lord has degrees in medicine and law and is an attorney specializing in medical-legal and constitutional issues.

For information, call toll free: 1-800-682-1776.

The above statements are an exact reproduction of those submitted by the candidates. The Office of the Secretary of State has no editorial authority.

President and Vice President



Our opponents in this election have had a conspiracy of silence on the central issue in world politics: the fact that the imperialist war against Iraq last year was the opening guns of World War III.

At the center of the debate in U.S. ruling circles in this election year is how they can respond to the new world disorder accelerating out of the combined results of the war against Iraq, the fracturing of the Soviet Union and Eastern Europe, and economic trade wars being sharpened by the world depression affecting not only the Third World, but Europe, North America, and Japan as well.

The divisions among the candidates are simply over how best to unload more and more of the burden of the economic and social crisis onto the backs of working people around the world in a desperate attempt to salvage the crisis-ridden system of capitalism.

Washington's war moves against Iraq, North Korea, and Libya and its determination to remain the undisputed strategic military power in the world are current examples of this course.

Combined with the 1990-1992 "double-dip" recession, these events have sharpened competition and trade disputes between capitalists in Japan and the United States, within North America and Europe, and between the European Community and the United States.

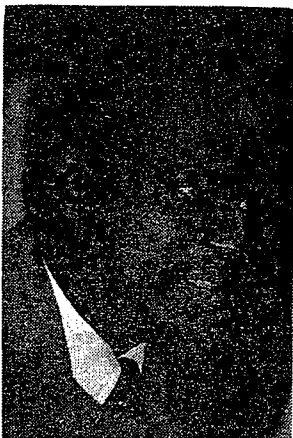
If capitalism is not replaced by working people, the international conflict among the imperialist powers will eventuate in a third world war. This outcome can only be prevented by an international movement of workers and farmers that uncompromisingly fights to disarm the warmakers and defend the victims of their wars, racism, and economic depression. We call on Washington to get its warships, bombers, submarines, troops, and hit squads out of every corner of the globe.

The rulers' drive toward war mirrors their attacks at home, which for more than a decade have driven down the real wages and living conditions of working people. Both the Democrats and Republicans, the parties of big-business, have a common fundamental domestic policy. Under the impact of the deepening social crisis, they have moved to the right and become more reactionary every year, challenging democratic rights, a woman's right to abortion, and Black rights won over the past 25 years.

Our campaign begins with the fact that the working class is international. We have common interests, face a common crisis, and have a common enemy. Our campaign will travel across the country and around the world with this message.

Working people can unite on a world scale to fight for protection from the ravages of the universal crisis of the market system. To this end we advance demands that defend the interests of all working people:

- 30 hours work for 40 hours pay
- Defend affirmative action
- Cancel the Third World debt



**James
WARREN**
Socialist Workers
Party



**Estelle
DeBATES**
Socialist Workers
Party

Campaign Address:
Socialist Workers 1992 Illinois Campaign Committee
545 W. Roosevelt Road
Chicago, IL 60607
Telephone: (312) 829-6815

The above statements are an exact reproduction of those submitted by the candidates. The Office of the Secretary of State has no editorial authority.



President and Vice President



**Lenora B.
FULANI**
New Alliance Party

Campaign Address:
Fulani for President
454 12th Street
Seattle, WA 98122
Telephone: (206) 329-9540



**Maria Elizabeth
MUNOZ**
New Alliance Party

Since the first primaries were held in New Hampshire last February, the American people have been expressing their profound dissatisfaction with our political process, with the two major parties that maintain a stranglehold on that process, and with the lackluster candidates the two-party system produces. In survey after survey, the vast majority of people have said that they want more choices, that neither of the major parties represents them, that a fundamental restructuring of the political system is called for.

Clearly, independent politics is on the agenda in America. The issue is: what shape will it take? I am running as an independent candidate for president of the United States as part of a long term effort to open up our political process — to make it more fair, more inclusive, and more democratic.

I am an ardent advocate of civil rights for people of color, for lesbians and gay men, for the elderly and the disabled. I fully support the right of women to choose an abortion and the right of all workers to organize and to strike. I think that corporate polluters should clean up after themselves — and foot the bill. I oppose war.

I believe that the profound crisis of the American economy cannot be resolved without radically transforming the political environment: until the American people are included in economic decision-making, the professional politicians of the PAC-owned major parties will continue to enact public policy that puts trillions into the pockets of the military industrialists and the Wall Streeters while leaving us without solutions to the array of social problems that confront us: homelessness, AIDS, police brutality, drug-induced violence, and the scandalous absence of a national health care system.

The Perot phenomenon revealed that millions of white Americans — hit hard over the last five years by the economic crisis — would waste no time in breaking with the two governing parties if the opportunity arose. The Black community, the Latino community, the lesbian and gay community, women and workers — who have suffered bitterly for decades, even centuries — must make that break as well.

If two to three million Black, Latino, labor and gay voters from the liberal wing of the Democratic Party vote for me in November, and if they are joined by two to three million Perot supporters, we would have the beginnings of a new, broad-based electoral majority that could win the White House (and a lot else besides) in 1996.

I urge you to vote independent in 1992 because political independence is America's future. I urge you to vote for me so that together the ordinary people of this country can shape our future in the light of a progressive and humane social vision.

The above statements are an exact reproduction of those submitted by the candidates. The Office of the Secretary of State has no editorial authority.

President and Vice President



As president I will contract with you, thereby promising in writing the following:

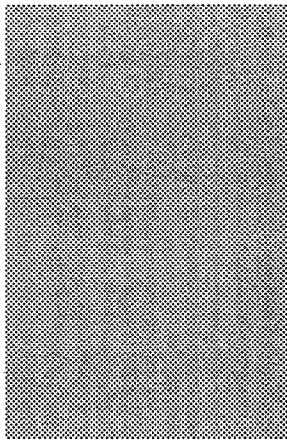
1) I will return us to a stable economy by getting rid of the private corporation, the Federal Reserve (FED). The FED charges us interest on our own money. It has never been audited.

2) Eliminate the income tax. Return to the Constitution and impose tariffs, excise taxes and impose taxes. According to Reagan's Grace Report released in 1984 not one dollar of personal income tax goes to the U.S. Government. It goes to pay the interest due the Federal Reserve.

3) Stop all foreign aid. We must put America back on her feet and heal her before we help others. Our people are suffering and must not be ignored by the government any longer. It must be America First!

The election of 1992 will be the most important in the history of the United States! The voters will have only two choices...they will choose either the New World Order of George Bush and Bill Clinton, as they both have the same agenda, or select a party that will stop the headlong plunge into disaster. The American people can no longer afford the huge national debt with its billion dollar a day interest. Ownership of our money must be wrested from the private corporation known as the Federal Reserve. The debt money system *must* be eliminated, and replaced with debt free U.S. Bills that will freely circulate in our economy. Without this huge national debt, collection of taxes will no longer be necessary.

The giving away of our money to foreign and unfriendly nations must stop—it is simply America First! With Bo Gritz as your president, you can be sure that these actions will be taken, we will sign a contract to that effect. Has any other candidate offered to do this. Aren't you tired of broken promises like "no new taxes." Give us a chance to prove to you that America can be great again. A vote for Bush or Clinton will give you more of the same only this time The New World Order will insure that you won't get the chance to vote again.



**James "Bo"
GRITZ**
Populist Party

**Cy
MINETT**
Populist Party

Campaign Address:
Populist Party of Washington - Bo Gritz
1916 Pike Place #695
Seattle, WA 98101
Telephone: (206) 781-5617



President and Vice President

Lyndon LaRouche's program for ending the economic depression and building a productive future for all Americans:

LaRouche would reverse the disastrous shift to post-industrial policies begun in the mid-1960s. Beginning with nationalizing the Federal Reserve and converting it into a National Bank of the United States, the federal government will issue over \$600 billion in low-cost credit to state and federal authorities for infrastructural public works. This will create 3 million jobs in the public sector, and 3 million jobs among private sector vendors to the government.

The increase in the tax-revenue base and the growth of our national economy that will result is the only way to provide the economic and social justice to which all Americans are entitled, and to which LaRouche is deeply committed.

Components of the LaRouche program for economic revival:

- Large-scale water improvement projects including the North American Water and Power Alliance (NAWAPA). NAWAPA alone would provide 135 billion gallons of water per day for the U.S.: enough water to satisfy the thirst of the biggest industrial recovery in the history of America.

- The rebuilding of our transportation grid, especially our rail system, emphasizing rapid transit systems, including Maglev, in the densely populated areas of the country. Maintenance and some expansion of our existing highways, roads and ports.

- The construction of the energy grid needed to power an industrial recovery, including nuclear energy, with our ultimate goal being fusion power development. Only fusion energy can guarantee the vast energy and raw materials needed for the next century.

- The creation of a new healthcare-delivery infrastructure, integrating public and voluntary hospitals and clinics with the private medical profession. The whole system, public and private, would be organized to provide adequate health care for every community in this nation:

- Education must return to the classics (emphasizing languages, geometry, etc.) and not be based on rehearsing our children to pass multiple-choice, questionnaire tests. Institute a new version of the Civilian Conservation Corps of the 1930s, not based on digging ditches, but upon exposing our youth to the most advanced technologies to be used in the infrastructure programs outlined above.

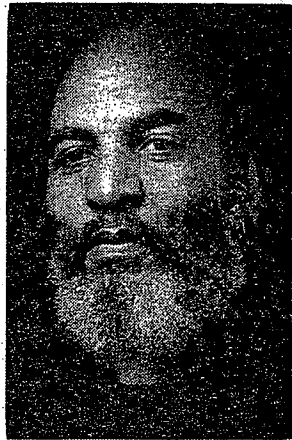
- A science-driver, to fuel industrial productivity, such as a long-range buildup toward the colonization of Mars.

LaRouche's Vice Presidential running mate, veteran civil rights leader Rev. James Bevel, a founder of the Student Nonviolent Coordinating Committee and Direct Action Coordinator for the Southern Christian Leadership Conference, states:

"It is urgently necessary to build an independent people's movement based on the U.S. Constitution and the Declaration of Independence. America has been criminalized by the way it votes. The person who votes for the lesser of two evils, votes for evil. And not voting is a crime of omission. The people must ensure that the self-evident truths of life, liberty and the pursuit of happiness, survive. This requires a moral economic policy, based on the Christian idea of love."



**Lyndon H.
LaROUCHE, Jr.**
Independent



**James L.
BEVEL**
Independent

The above statements are an exact reproduction of those submitted by the candidates. The Office of the Secretary of State has no editorial authority.

President and Vice President



Ross Perot, a businessman we want as President, and James Stockdale, an educator we want as Vice President, have started a revolutionary change in the way America governs itself. You, the voter, are the key to that change. Many heard the message and responded by registering and voting in the primary election in record numbers. 53,734 of you wrote in Ross's name in the presidential preference primary in March and even more of you signed petitions (on one day) to put his name on the ballot in Washington State when only 200 signatures were needed.

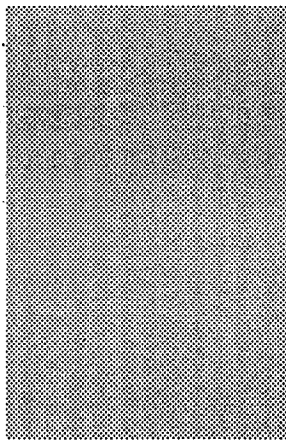
From that initial wide-spread support it was obvious that Washington voters and their counterparts across the country were unhappy with government and politics as usual. As Mr. Perot entered "the race" it became more-obvious that the candidates selected by the two party system were more intent on character assassination than on issues and problem solving. On July 16th Mr. Perot stepped back from active campaigning in hopes of forcing the Democrats and Republicans to face up to the annual deficit in excess of \$380,000,000,000 (that is \$380 billion) and the four trillion dollar national debt. From a position on the sidelines Mr. Perot prodded them into at least talking about the deficit, however, neither President Bush nor Governor Clinton presented a comprehensive workable plan. The "Wall Street Journal" tells us that both of their plans are hundreds of billions out of balance. Ross wrote and published his own plan *United We Stand: How We Can Take Back Our Country*. You have responded by buying the book in record numbers and putting it on top of the New York Times best seller list. We all want our country back. We are willing to make the tough choices necessary to pass on the American Dream to our children.

When you finish reading this Voters Pamphlet ask yourself if the congressional and senatorial candidates have addressed the important issues and have what it takes to make the changes necessary. In his book Mr. Perot outlines the ABC's of his platform - Accountability, Balance, and Courage. Please read it. For further information, call the state headquarters in Seattle at (206) 223-0062 or the Spokane headquarters at (509) 326-8089 for help.

It is time for YOU to pick leaders who will work for YOU rather than PAC's or special interests. We don't need leaders who will just cash in, we need leaders who will help US take back OUR country. Let this be the year YOU vote for YOUR children and grandchildren.



**Ross
PEROT**
Independent

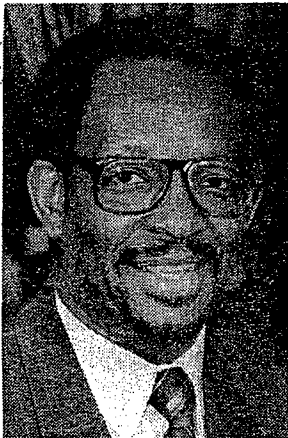


**James
STOCKDALE**
Independent

Campaign Address:
United We Stand, America-Perot Petition Committee
P.O. Box 19092
Seattle, WA 98109
Telephone: (206) 223-0062



President and Vice President



**Ron
DANIELS**
Independent



**Asiba
TUPAHACHE**
Independent

Campaign Address:
Washington State Campaign for a New Tomorrow
P.O. Box 1182
Bothell, WA 98011
Telephone: (206) 754-7473

Feeling run-down? Worried about your future and your children's future? Wonder whether pulling the lever for the Democrats or Republicans will really make a difference?

Let's talk.

In the past fifteen years of Republican Presidents and Democrat-controlled Congresses we've seen:

- Big Business disinvest in the United States and magnify its exploitation of foreign labor, moving hundreds of thousands of jobs out of the country, lowering wages and conditions for *all* working people.

- An environment increasingly at risk.

- Our inner cities devastated by poverty, homelessness, poor schools, and police brutality.

- The Treasury looted by the savings and loan scandal and other welfare-for-the-rich boondoggles. Tax breaks for the wealthy, slashed services for everyone else.

- Civil rights threatened by Republican-appointed and Democrat-approved extremists on the Supreme Court — especially a woman's right to control her body.

- Military funding for ultra-expensive, unnecessary weapons paid for with massive deficit spending that has mortgaged the well-being of children yet to be born.

- Racism, sexism, and homophobia by government officials encouraging discrimination and violence against women, people of color, lesbians, and gay men.

Neither party has changed its stripes. Both parties support the job-exporting, worker-degrading North American Free Trade Agreement. Neither party proposes nationalized health care, or major cuts in military spending, or job programs adequate to alleviate the horrendous conditions that caused the LA rebellion. In short, both parties are tied to the Corporate Vision of low wages and no unions, benefits, environmental safeguards, or other inconvenient "restrictions on trade."

Working people need at least *one* party to represent our interests. Ron Daniels and Asiba Tupahache offer a different vision for the future:

- *A socially responsible economy* with sustainable development to revitalize rural and urban areas: full employment, decent wages and benefits; nationalized health care; affordable housing; greater control by workers and communities over business, industry, finance, and commerce; right to unionize; progressive taxation.

- *Elimination of discrimination* based on race, nationality, religion, sex, sexual orientation, age, or disability.

- *Complete equality for women:* full reproductive rights, pay equity, quality child care, paid pregnancy leave, support for ERA.

- *Protection from the production and disposal of toxins* poisoning our air, land, water, and food; environmentally safe jobs.

- *Demilitarization and conversion to production for civilian needs* by cutting military spending by 70%.

- *Quality education for all:* children as our priority; multicultural curriculums; free public colleges and universities.

- *Restoration of treaty rights:* economic justice for all Native American peoples.

- *Reparations for African Americans* for slavery and continuing institutional discrimination.

- *Peace and development foreign policy:* self-determination of all peoples and nations; economic and technical assistance to underdeveloped countries; withdrawal of U.S. troops abroad; nuclear disarmament.

To realize this vision, we need a party and a movement for working people, independent of the Democrats and Republicans. Vote for *your* interests, not General Motors'. Vote Ron Daniels and Asiba Tupahache. Then get active and organize!

The above statements are an exact reproduction of those submitted by the candidates. The Office of the Secretary of State has no editorial authority.

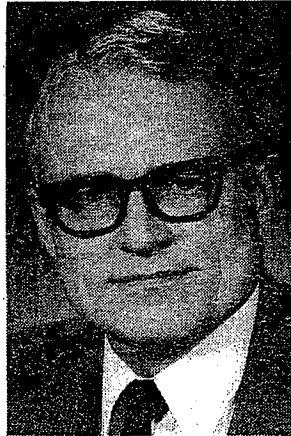
President and Vice President



**Howard
PHILLIPS**

**Washington Taxpayers
Party**

**Campaign Address:
Taxpayers for Phillips
9520 Bent Creek Lane
Vienna, VA 22182
Telephone: 1 (800) 2-VETO-IRS**



**Albion W.
KNIGHT, Jr.**

**Washington Taxpayers
Party**

Every American family is the victim of "Great Society" policies advanced by White House Republicans and Congressional Democrats.

Since 1961, Federal expenditures have increased from less than \$100 billion to more than \$1.5 trillion annually.

Since 1973, our standard of living has declined steadily. Americans work harder, but have less real income.

Vastly increased government regulation has closed down businesses, raised costs, and eliminated jobs.

More than change drivers, we must change directions, with a "vision of victory" to put America back on the right track.

We offer every taxpayer a "Grand Bargain." Help us cut Federal spending by \$500 billion per year and we will abolish the IRS, so that you can keep all of the thousands of dollars you otherwise would be sending to Washington in income taxes.

George Bush's annual budget is fifty percent greater than Ronald Reagan's 1987 budget — just five years ago. It was \$1 trillion then. It's \$1.5 trillion now.

We can't afford it.

Last year, the income tax produced less than \$500 billion. Borrowing and other revenues made up the difference. *If we cut spending by \$500 billion, we can cut taxes by \$500 billion.*

That will encourage savings, investment, consumption, and jobs.

I will keep America first militarily and make sure that our foreign policy is designed to serve the interests of American taxpayers and workers, rather than the goals of international banks, multinational corporations, and foreign governments.

I favor capital punishment. The answer to violent crime is not more prisons, but more executions. I will veto funds for those judges who thwart capital punishment or release dangerous felons.

As the former director of the United States Office of Economic Opportunity, I am the only non-incumbent candidate who has ever headed a major Federal agency—and the only Federal executive who, in office, launched a major effort to eliminate programs and cut spending in areas for which he was directly responsible.

The Taxpayers Party platform is based on the Bible and the Constitution of the United States, which establishes that all powers not explicitly delegated to the Federal government are reserved to the states and the people — that means you.

We are pro-jobs, pro-growth, and pro-life.

I will appoint no Federal judge who fails to publicly proclaim his acknowledgement that every unborn child is a human person created in God's image—entitled to full constitutional protections.

As Chairman of The Conservative Caucus and the U.S. Taxpayers Alliance, I've worked for limited government, traditional family values, and victory over Communism. I have fought against New World Order transfers of resources and authority to the World Bank, the IMF, and the United Nations. I have led national campaigns to block treaties which undermine U.S. liberty and security (Panama Canal, SALT II, INF, etc.).

As President, I would work to repeal quotas, to restore parental control of education, to cut off tax dollars for Planned Parenthood, to defeat gun control schemes, to end foreign aid, and to stop Federal subsidies for homosexuality.



President and Vice President



**John
HAGELIN**
Natural Law Party



**Mike
TOMPKINS**
Natural Law Party

Campaign Address:
Dr. John Hagelin for President Committee
51 W. Washington Street
Fairfield, IA 52556
Telephone: (515) 472-2040

The *Natural Law Party* was established to "bring the light of science into politics"—to introduce the most advanced, scientifically proven solutions to the nation's pressing problems.

Dr. John Hagelin, Presidential candidate, is a Harvard-trained quantum physicist and a world authority in unified field theories.

Economy: Cost-effective solutions to national problems of rising crime, spiralling health care costs, rehabilitation, etc., will eliminate the budget deficit and retire the national debt, while lowering taxes significantly. Reduced taxes will stimulate the economy, cut unemployment, and provide the basis for long-term economic growth and prosperity.

Energy and environment: Under appropriate government policies, environment and economy are not at odds. The Natural Law Party will support the development of new jobs and industries in energy conservation, renewable energy, sustainable agriculture, and related fields that will further the interests of both the economy and the environment.

Health care: Extensive research shows that prevention oriented health education and prevention oriented natural medicine will provide better health and cut health care costs by more than half. The resulting savings of hundreds of billions of dollars will allow government to ensure high quality health care to the 35 million Americans who currently do not qualify for Medicaid and cannot afford the high cost of private insurance.

Education: The Natural Law Party promotes educational programs that directly unfold intelligence, creativity, moral reasoning, and higher states of consciousness. Because such education is highly relevant to the student's own life, it will put an end to the growing attrition from our nation's schools and colleges. This will eliminate functional and technological illiteracy, and will substantially boost our national productivity and international competitiveness.

Crime, violence, drugs, and the inner city: The Natural Law Party supports effective job training, technical training, and management training programs, combined with practical programs to develop an individual's intelligence and full creative potential. The Natural Law Party also promotes proven programs to dissolve accumulated stress in the inner city environments. Such programs, including Transcendental Meditation, have been shown to relieve not only the physiological symptoms of stress, such as high blood pressure, but to reduce symptoms of societal stress, such as crime, violence, accidents, and hospital admissions, and to promote positive trends throughout society.

Defense and foreign policy: The Natural Law Party offers a scientifically proven peace creating technology, which will help to ensure increasingly peaceful and harmonious relationships among the family of nations. This technology will allow defense spending to be responsibly cut, and can thereby ensure a steadily growing "peace dividend" that can be used for more life-supporting programs at home and abroad.

The Natural Law Party believes that U.S. foreign policy should shift immediately from one based principally on military aid to a foreign policy based on the exportation of knowledge. American expertise in areas such as business administration and agriculture, supplemented where necessary with economic support, will allow many developing countries to become financially self-sufficient, eliminate hunger and poverty, and create a more affluent and prosperous world.

The above statements are an exact reproduction of those submitted by the candidates. The Office of the Secretary of State has no editorial authority.

United States Senator



Patty MURRAY

Democrat

Campaign Address:
People for Patty Murray
P.O. Box 3662
Seattle, WA 98124
Telephone: (206) 621-0611

Patty Murray will bring the voice of working people to the U.S. Senate. She has a proven record as an effective legislator, committed to making government work for *all* people. As a State Senator, she fought to pass legislation ranging from education to family leave, from safe neighborhoods to health care. As a U.S. Senator, she offers the voice for real change in our national government.

Restoring the economy and reducing the \$4 trillion debt are critical issues. A *long-term* economic plan which includes a shift in R&D funding from military to civilian technologies, investment in infrastructure, education, and manufacturing must be implemented. We must reduce the military budget by at least \$100 billion over the next five years, increase job training, reform the tax system, and reduce skyrocketing health care costs.

The success of the economy is dependent on our ability to provide jobs and educated workers for the future. Government, industry and academia must join forces to provide leadership committed to educational excellence.

The federal government must implement health care reform. Patty Murray will work to reform the health care system to provide strict cost-containment mechanisms and increase access. Health care decisions must be taken out of the hands of insurance companies, and returned to individuals and their health care providers.

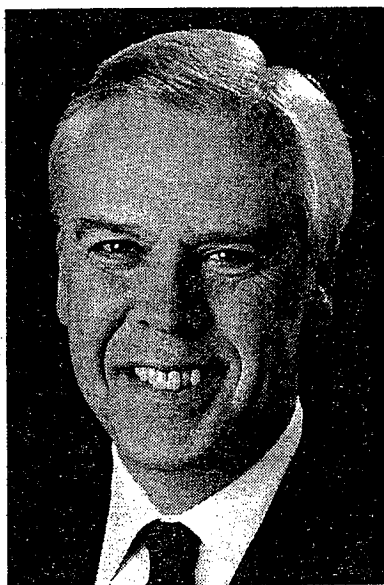
Patty Murray will strive for workplace policies where people are not forced to choose between their job and their loved ones in times of crisis.

The environment and economy should not be in opposition to each other. Our future success is dependent on our ability to balance the health of both. Patty Murray will work to find that balance.

Patty Murray believes that with common sense, courage and leadership, real people can meet the challenges of the future. She is a voice for real change.



United States Senator



**Rod
CHANDLER**
Republican

Campaign Address:
Chandler 92
P.O. Box 5755
Bellevue, WA 98006
Telephone: (206) 454-1166

Rod Chandler has a clear agenda for change. As our next United States Senator, Rod will work to control spending, reform health care, create jobs and change the liberal ways of Congress.

Control Spending

Rod supports the Balanced Budget Amendment to the Constitution and the Line-Item Veto. He has voted consistently for across-the-board spending cuts. Rod also sponsored the Sunset Act for government programs (except Social Security) that would make them justify their existence every five years or go out of business.

Reform Health Care

Rod is fighting for dramatic health care reforms that retain our rights to choose our own doctors, control costs, expand access, and limit lawyers' fees in medical malpractice cases. He does not support creating another huge, inefficient government bureaucracy to run our health care system.

Create Jobs

Rod's economic blueprint for change will create jobs. He supports an investment tax credit and a capital gains tax cut to foster growth. Rod is an activist for agriculture, electronic, aerospace and forest product exports. And, he favors balancing environmental regulation with concern for people and their jobs.

Change Congress

Rod supports national term limits of 12 years. He also believes we must require Congress to live under the same laws it imposes on the rest of our families and businesses.

Rod Chandler's life has prepared him to turn the U.S. Senate into a place of action. He was born in a rural community, started his own small business, and together with his wife, Joyce, raised two children.

In 1974, he ran a grassroots campaign for the state House, and won. Eight years later, he won a hard fought campaign for Congress. Now, Rod wants to fight for us in the United States Senate.

Rod Chandler, he stands out because he stands up for change.

United States Representative

Third Congressional District



Jolene UNSOELD Democrat

Campaign Address:
Unsoeld Campaign
208 E. 16th Street
Vancouver, WA 98663
Telephone: (206) 750-7848

Jolene has successfully fought for Southwest Washington's working families — as an independent, no-strings-attached citizen activist, state legislator, and now as our Congresswoman. She's always made a difference fighting to change the status quo.

Jolene puts us first. She's fighting to bring jobs to our communities

with a federal jobs program for unemployed Americans. She's promoting private sector employment with a successful ban on public log exports, and tax incentive legislation to process private logs locally.

Using her Education and Labor Committee seat, Jolene helped write legislation to give all Americans opportunities to attend college, trade, and technical schools; and for child care, early childhood education, and programs for latchkey kids. She successfully steered federal funding toward the effective DARE anti-drug education program, cosponsored the Family and Medical Leave Act, and demands full Head Start funding.

Jolene believes every American has a right to quality affordable health care. She opposes government interference with the personal and private decisions women face on abortion.

She has fought social security cuts and introduced legislation protecting retirees from unfair double-taxation of their pensions.

Jolene believes in a strong economy — on our terms. From the Merchant Marine and Fisheries Committee she led the fight to ban Asian driftnets stealing our salmon and to restore Northwest fish runs.

Jolene has worked to balance timber-based jobs with protected old-growth forests by introducing legislation for "New Forestry" management and environmentally sustainable logging. She's demanding tougher, smarter negotiations to open foreign markets and she's fighting to permanently ban oil drilling off our coast.

Compare the records; the choice is clear. Jolene fights for change and puts us first. She has the energy and integrity we need right now.

Let's return Jolene Unsoeld to Congress. She fights for Southwest Washington's working families — and wins!



Pat FISKE Republican

Campaign Address:
Fiske for Congress Committee
1309 N.E. 134th Street, Suite C
Vancouver, WA 98685
Telephone: (206) 576-8961

Pat Fiske is a successful businessman who has been very active as a leader in a wide range of community programs in Western Washington for 18 years. He is running for Congress because he

believes that only through experienced, qualified Congressional candidates defeating incumbents will we make the changes in Congress that America is demanding.

Pat and his family live in Vancouver, WA. He and Sally have been married 25 years and have three children. Pat was graduated from Indiana University and is a Navy veteran.

He is a business consultant who previously started and owned his own businesses. He has also worked as an executive with several corporations. Pat is the founder of Homewell in Mt. Vernon, a home health care and hospice business.

When he was a state legislator Pat created Washington state's Senior Citizen Intern Program, which is now a model for several states. He chaired the Select Committee on Private Enterprise to get government out of competition with the private sector. He introduced legislation creating the state's respite care program. His interests have also included legislation for health care reform and for developmental disabilities programs.

He believes that members of Congress should live by the same laws as all Americans, rather than exempting themselves from many regulations. He supports term limits for Congress; the Balanced Budget amendment; making health care accessible to all; amending the Endangered Species Act to allow for economic and environmental information to be considered equally; lowering the capital gains tax; rolling back the late-night Congressional pay raise; private property rights and compensation for takings; reforming Congressional fundraising laws, and the line item veto.

The above statements are an exact reproduction of those submitted by the candidates. The Office of the Secretary of State has no editorial authority.



United States Representative Fourth Congressional District



Jay
INSLEE

Democrat

Campaign Address:
Inslee for Congress
P.O. Box 686
Selah, WA 98942
Telephone: (509) 454-3157

I am a father. My three children and our families need a change in Congress.

It is time that Congress faces our problems rather than hides from them. It is time that we make cuts necessary to remove the federal

debt from our children's backs. We can start by reining in Congressional perks, reducing our military budget to reflect post Cold War reality, requiring our allies to share in the defense burden, and finding inefficiencies in the federal government. As one who has had experience in cutting budgets on the state House Appropriations Committee, I believe this can be done.

It is time to pass a family leave bill, provide early childhood education, and pass the bill protecting women from discrimination in employment. It is time to protect an American woman's right to Choice.

It is time to control the skyrocketing rate of medical inflation by streamlining the medical billing system, and using those savings to cover those people currently without medical coverage.

As one who has a small hayfield and lives in orchard country I believe it is time to help family farmers by standing up and insisting that foreign trade barriers be eliminated.

We need more action on the Hanford Cleanup and less restrictive paperwork. We only have one world to pass on to our children, and I believe that we can both create jobs and preserve the natural world by fighting for this cleanup effort.

We need preventative health care measures so that we have health care, not just sick care.

As the son and brother of a teacher I believe we must concentrate on the education of our children.

If you share my beliefs, I hope you will send me to Congress, where we need less self-interest and more leadership.



Richard "Doc"
HASTINGS

Republican

Campaign Address:
Doc Hastings for Congress
Committee
3180 W. Clearwater #Q
Kennewick, WA 99336
Telephone: (509) 783-5440

Soon you will choose someone to represent you in Congress. I'd like to receive your vote.

I'm not a professional politician nor a lawyer. I'm a small businessman. But I did serve my community in Olympia as a State

Legislator. After four terms, I left the legislature and returned home to run my business and spend more time with my wife and three children.

First, **we need to pass a constitutional Amendment requiring a balanced budget.** We cannot continue to spend beyond our means - our grandchildren cannot afford it. **Raising taxes is not the answer!** We do not have a revenue problem, we have a spending problem.

For years the farmers and foresters of Central Washington have been the caretakers of the earth. They have produced lumber for our schools and our homes, and grown food for our tables. Now, the environmental extremists want to put owls and insects ahead of jobs and families. *I will work to amend the Endangered Species Act to put people first.* Common sense must prevail on this issue.

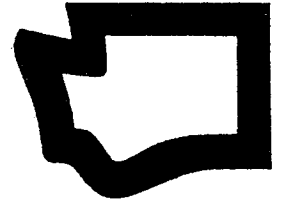
We need to change the mentality of the welfare system to stop providing jobs for bureaucrats and instead, to help those in need find jobs. We need to provide incentives for those on welfare to break the cycle. Welfare recipients should be in school, in job training, or on a job at all times.

Congress needs to clean up its act now! If elected I will fight to repeal the congressional pay raise. **Most importantly I will work to enact term limits on all members of Congress!**

I was born and raised in Eastern Washington. My commitment is to take the same honest values that I learned growing up, back to Washington, D.C. I'm asking for your vote to become your next Congressman. Thank you!

The above statements are an exact reproduction of those submitted by the candidates. The Office of the Secretary of State has no editorial authority.

Governor



Mike Lowry will govern for all the state's hard working citizens and business people, not the special interests.

That's why Lowry alone in the governor's race refuses to take big money contributions. His limit: the \$1,500 recommended by the League of Women Voters.

His aim: To make our state, its environment, its economy better for ourselves and our children.

Lowry's method: To use leadership skills and ideas he honed as a state budget expert, a local government leader, an exceptional member of Congress and for the past four years a teacher ranked outstanding at Seattle University — all to bring diverse people together to get the job done.

To the governorship Lowry brings a special point of view:

He is the candidate with deep roots on both sides of the Cascades.

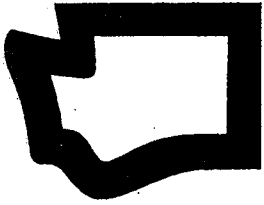
The Renton Democrat is a Washington State University graduate, born and reared in rural Eastern Washington, where he maintains strong ties and got his values of honesty and straight talk. Lowry is equally at home discussing wheat markets, timber harvesting or the Export-Import Bank program that he saved in Congress that finances Washington aerospace and other export sales, upon which thousands of Washington jobs depend.

Lowry's priorities: To make our schools second to none so that all students receive the training they need to reach their highest goals. To institute forthwith a health care program affordable and available to all citizens. To restore, guard and enhance our environment, including salmon and steelhead runs. To relieve unfair tax burdens on small businesses and low and middle income citizens. To make state government lean, vigorous, quick in delivering services. To create a business climate that nurtures our natural resources, high technology and emerging industries. For responsive government beholden only to the citizens, vote for Mike Lowry, Democrat, governor.

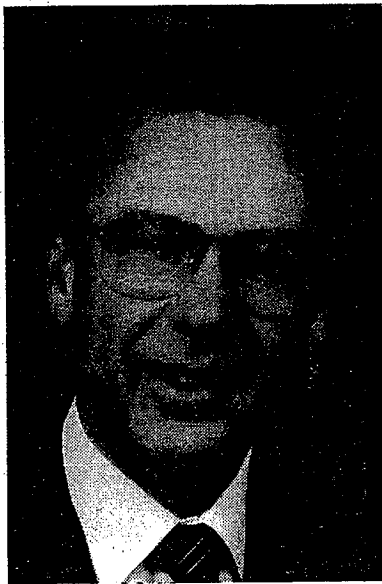


**Mike
LOWRY
Democrat**

Campaign Address:
Mike Lowry for Governor
P.O. Box 4246
Seattle, WA 98104
Telephone: (206) 441-MIKE



Governor



**Ken
EIKENBERRY**
Republican

Campaign Address:
Eikenberry '92
414 Olive Way, Suite 10
Seattle, WA 98101
Telephone: (206) 623-7167

When I was a young man growing up in Wenatchee, the State of Washington had an open admissions policy at state colleges and universities. Essentially, any young person who wanted to go to college was allowed to do so, at a reasonable cost. It was a gateway to the middle class for children that came from less than well-to-do families.

Because of the open admissions policy, I was able to attend a community college, and later work my way through Washington State University and the University of Washington Law School.

I do not know the course my life would have taken had it not been for open admissions, but it is safe to say that I would not have become an FBI agent, legislator, prosecutor or Attorney General. I doubt that I would be running for Governor.

Washington State abolished its open admissions policy a few years ago. It was a mistake. Reinstating open admissions is one of my top priorities as Governor.

I fervently believe that we can keep taxes down, and still find money for the important things through better management and by cutting waste in government.

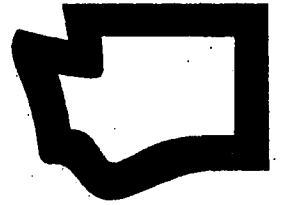
The state should contract with private industry to provide state services whenever possible.

We should put a cap on the size of the state workforce, and gradually reduce it through attrition.

Criminals should be required to work to help reduce prison costs.

Through better management, we can avoid new taxes, solve our deficit problem, and still find funds for better schools, improved health care, law enforcement and the protection of our natural resources.

Lieutenant Governor



**Richard
KELLEY**

Democrat

Campaign Address:
Kelley For Lieutenant Governor
P.O. Box 4862
Seattle, WA 98104
Telephone: (206) 343-8857

After 32 years as an office holder and lobbyist, the Republican incumbent deserves a comfortable retirement. The voters deserve a leader for their Lieutenant Governor.

Richard Kelley, 42, will be that leader. He knows we need to reform our scandalous campaign finance system. We need to protect a woman's right of choice. We need to invest in a statewide rapid rail system to protect our environment, while creating jobs and building our tax base to fund education, healthcare and housing.

Kelley will not accept contributions from lobbyists, or any contribution above the League of Women Voters' proposed limit.

He has outstanding training and experience. He worked his way through Harvard, and later earned an M.P.A. and a Ph.D. in Government from the University of Washington. He has taught Government and Public Finance at several colleges. He served as Seattle's Deputy Mayor, but most of his public service has paid him little or nothing. In 5 years as member and Chair of the State Personnel Board, he arbitrated over 100 labor disputes. For the past 6 years, he has been President of Critical Ventures, a low-income housing organization. He has been married 12 years, and has two children.



**Joel
PRITCHARD**
Republican

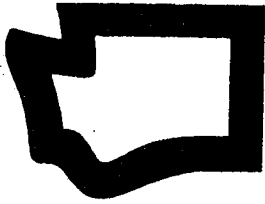
Lt. Governor Joel Pritchard is a proven leader with experience as a U.S. Congressman, state legislator, and state-wide elected official. As Lt. Governor he has presided over the state senate in an effective and non-partisan manner, and served as acting Governor over 240 days during the past 4 years.

During the past two years, Joel Pritchard in cooperation with *Washington Literacy, the Washington State Library, and the Daily and Weekly Newspapers* of Washington, founded *Washington Reads*, a statewide effort to honor the 10,000 plus adult literacy volunteers serving our state.

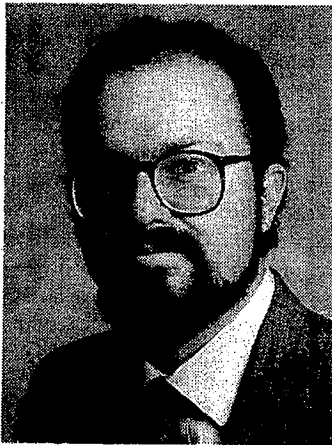
Lt. Governor Pritchard is Chairperson of *Washington 2000*. The objective of the Lt. Governor and the *Washington 2000* Advisory Board, is to challenge every city, town, and neighborhood in Washington state to adopt the national education goals agreed to by the nations governors and the President and develop a community wide strategy to achieve them.

He is a strong advocate of **Campaign Finance Reform**. He supports efforts to reduce the amount of money spent in campaigns; limiting the size of contributions, and forbidding state officials from soliciting political contributions from state employees.

Joel Pritchard practices the high standards we expect of our elected officials. He has earned your vote for re-election.



Lieutenant Governor

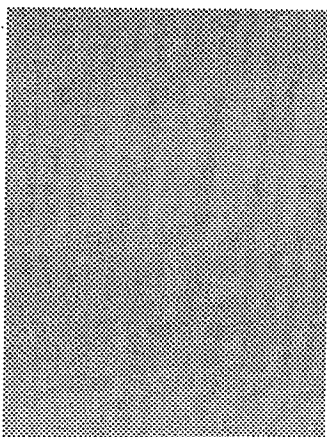


**Tom
ISENBERG**
Libertarian Party
Telephone: (206) 329-5669

As a Libertarian, I believe that Big Government is a cancer masquerading as a cure. Republicans and Democrats alike continually impose new taxes, waste, and laws. Their policies may benefit different pressure groups lobbying for handouts or regulations that restrict competition, but always at the expense of our taxpayers, consumers, small businesses, and charities.

Libertarians are different. We stand against government rigging the marketplace, criminalizing peaceful behavior, or redistributing your earnings. Libertarians stand for creating jobs and cutting prices by restoring honest competition; aggressively cutting taxes and wasteful programs; holding polluters fully liable for their damages; getting serious with violent criminals; empowering all families with educational choice; and restoring the civil and economic liberties we've already lost.

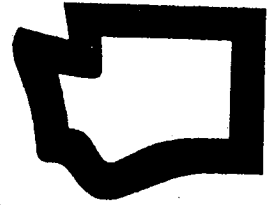
Big Government is rapidly eroding our prosperity and our freedoms, so please don't waste your vote on the two parties responsible. The more votes Libertarians get, the more the Demopublicans will change to earn your support again. Libertarians don't have to win, we just have to give them a good scare. With hundreds of elected office-holders nationwide, the Libertarians are already America's third-largest and fastest-growing party! Together we can restore prosperity, tolerance, and common sense. For free information call 800-682-1776.



**Absolutely
NOBODY
Independent**

Candidate did not submit a statement or a photograph.

Secretary of State



Jeanne DIXON

Democrat

Campaign Address:
Jeanne Dixon Campaign
4916.5 Erskine Way S.W.
Seattle, WA 98116
Telephone: (206) 937-9714

Elect Jeanne Dixon (D) to Secretary of State position—2nd in succession to Office of Governor.

One primary function of Secretary of State is the corporation

Division. As in her 1988 Governorship campaign against White-Collar crimes, Jeanne opposes State mismanagements allowing the Secretary of State office's back doors open to illegal entries of corporations using alias names without proper payments of required fees, fines, taxes or unpaid judgements—permitting unfair competitions violating WA Constitution Article 12, Section 7, and other corporation restrictive statutes!

Should this back door remain unlocked and open 4 more years of these illegal entry violations affecting our citizens' welfare and economy? Certainly not!!!! Then —

Jeanne Dixon is the only candidate qualified for this position now offering to stop corporate-monopoly illegal accesses, and demand retroactive fines due the State and citizens.

Jeanne Dixon has the necessary corporation, partnership business experiences and 49-year knowledgeable administrative, financial background in self-proprietorships and civic participations to interpret financial annual stockholders statements and directorships to "follow-the-money" through corporation records necessary to properly administer these Secretary of State's responsibilities.

Please help! Guard your heritage and Constitutional rights!

Vote for Jeanne Dixon. Strike against continued "Rodney King" injustices, Government White-Collar crimes!



Ralph MUNRO

Republican

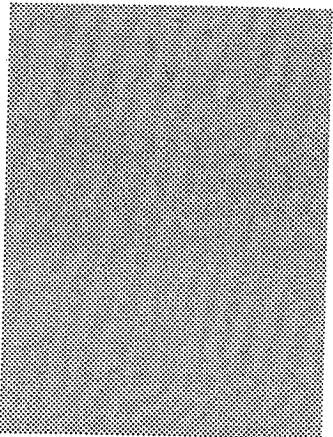
Campaign Address:
Citizens for Ralph Munro
1721 Thurston Avenue N.E.
Olympia, WA 98506
Telephone: (206) 534-9911

As Washington's chief elections officer, Ralph Munro has modernized voter registration with innovative programs like "Motor Voter," saved our new 9th Congressional District, and led efforts to make polling places accessible. He is committed to changing the initiative-created Presidential Primary so it becomes the true voice of the people it was intended to be.

Ralph Munro works tirelessly to make government more responsive. He was the driving force behind the "one-stop" business license system, and developed a program that helps victims of domestic violence maintain their confidentiality. As chair of the Productivity Board, Ralph Munro encourages ideas that cut the cost of government.

Whether coordinating our Centennial Celebration, building the Washington State Vietnam Veterans Memorial, or promoting trade and goodwill with countries around the world, especially our Pacific Rim neighbors, Ralph Munro knows how to work with people to get things done. He has received numerous awards for public service, including the prestigious Warren G. Magnuson award.

Through his accomplishments and vision for Washington's future, Ralph Munro continues to live up to his pledge to "help make our state as good for our children as it has been for us." His record merits your vote.



Maurice WILLEY

Libertarian Party

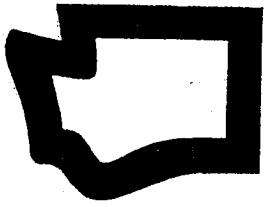
Campaign Address:
4755 S. Bond Street
Seattle, WA 98118
Telephone: (206) 725-9423

This office has one function I will take a special interest in: co-chairing the State Productivity Board. The purpose of this body is to promote efficiency and productivity in state government. Since its creation in 1983 it has only managed to save fourteen million dollars. This is disgraceful. I will bring a new aggressiveness to seeking out ways to improve government efficiency, with an emphasis on contracting out private service delivery. As part of the Libertarian message emphasizing individual choice and tolerant diversity, I will also place an emphasis on further improving the registration of voters. I am also interested in keeping the election process open to all individuals, not just the select candidates of the major party machines.

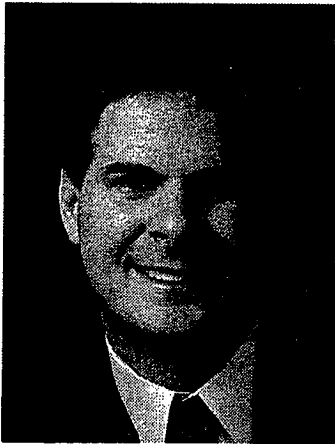
Next, as the registrar of corporations and charitable organizations, I will seek ways to make these faceless and anonymous organizations more accountable for their actions. Too many irresponsible acts are committed in the name of absent and uninvolved shareholders. It is time to place more emphasis on real individual conscience, and less on the fictional concern of corporations.

Finally, I absolutely support a woman's right of reproductive choice and the decriminalization of all crimes not involving force, fraud or exploitation of minors.

The above statements are an exact reproduction of those submitted by the candidates. The Office of the Secretary of State has no editorial authority.



State Treasurer



Dan GRIMM

Democrat

Campaign Address:
Dan Grimm for State Treasurer
P.O. Box 95422
Seattle, WA 98145-2422
Telephone: (206) 522-3275

Dan Grimm is the only candidate for State Treasurer with a proven record of managing state finances. During his first term, he earned taxpayers more than \$1 million each working day of the year.

Interest earnings were \$935 million, with another \$190 million saved from bond refinancing. This was accomplished with an office budget that increased less than inflation and by a staff the same size it was when Dan Grimm took office.

His leadership brought the state an improved credit rating, which means even more savings for taxpayers.

A state savings bond program implemented by Dan Grimm provides tax free income for Washington families which must deal with the high cost of higher education.

Dan Grimm's courage in attacking the status quo led the way to improve management at the State Investment Board and greater security for \$22 billion in pension and other trust funds.

Grimm has also shown leadership by adopting an ethics policy for himself and his staff that goes well beyond the requirements of Public Disclosure law.

A long time resident of Puyallup, Dan still lives there with his daughter Whitney K, who is in the first grade.



Claude L. OLIVER

Republican

Campaign Address:
Claude Oliver for
Washington State Treasurer
P.O. Box 3380
5903 W. Clearwater
Kennewick, WA 99301
Telephone: (509) 783-0659

As State Treasurer, Claude Oliver will bring proven management skills to Olympia. The State Treasurer is Chairman of the State Investment Board, (SIB), which has been rocked by scandal revealing mismanagement and conflicts of interest.

Claude Oliver will: • Initiate independent Special Investigation of the State Investment Board. • Seek *legislation* establishing **professional and ethical** investment standards, mandating full **audits and disclosures** annually. • Seek *legislation* barring campaign contributions from State money managers. (Current Treasurer has received thousands since 1988 — \$18,500 May, 1992.) • Create **The Washington Financial Resources Board**. Let's bring together the best financial minds at **no cost** to the taxpayer to establish a "**Blue Print**" for State fiscal planning.

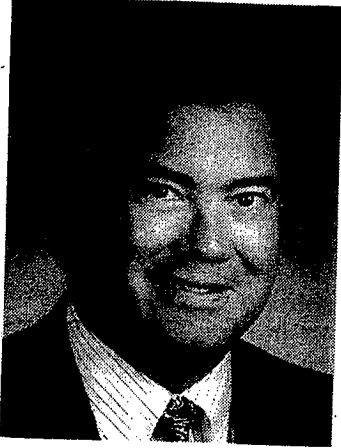
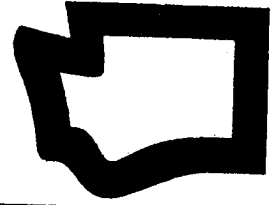
Professional Nine years commercial loan officer; Eleven years Benton County Treasurer. Claude is known for trend setting office efficiencies and willingness to follow through when others quit.

Claude Oliver obtained \$14.6 million in back taxes from Hanford, U.S. Department of Energy and is leading the National initiative to secure over \$50 million due Benton, Grant and Franklin Counties and Washington State from Hanford community impact entitlements.

Streamlined county tax receipt processing, gaining 300% efficiency.

Personal Married 25 years to Diane Oliver, has two children in high school; and coaches youth baseball.

State Auditor



Brian SONNTAG

Democrat

Campaign Address:
Sonntag for State Auditor
P.O. Box 111912
Tacoma, WA 98411
Telephone: (206) 756-8075

"Hire" **Brian Sonntag**, your State Auditor.
Sonntag will bring accountability to your government.

Sonntag will audit the performance of every state department, agency, and bureaucrat to ensure the best service for our tax dollars.

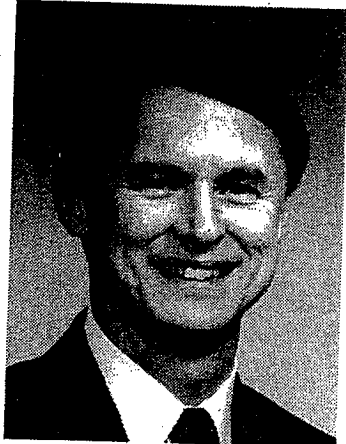
Brian Sonntag, as County Clerk and County Auditor in Pierce County is a proven, effective administrator, who has "opened the doors of government."

Sonntag was appointed by Booth Gardner to the Governor's Advisory Committee on Intergovernmental Relations, and represented County Auditors on the State Election Code Task Force.

Brian Sonntag is supported by business, labor, elected officials, and citizens throughout Washington ... Washington State Labor Council, State Teamsters, Congressman Norm Dicks, House Majority Leader Brian Ebersole, Washington State NOW/PAC, State Council of Firefighters, Machinists #751, and campaign co-chairs Snohomish County Clerk Kay Anderson, Kitsap County Commissioner John Horsely, and Stan Naccarato.

"The issue for the office of State Auditor is Accountability. We need to ensure state government is working effectively, efficiently, and manages your tax dollars wisely. **Brian Sonntag** will provide the professional leadership we need," say Bob Graham, State Auditor; Dan Grimm, State Treasurer; Liz Luce, Clark County Auditor; Sylvia Skratek, State Senator.

"Together we'll make state government work for us."



Sam REED

Republican

Campaign Address:
Citizens for Sam Reed
P.O. Box 522
Olympia, WA 98507
Telephone: 1 (800) 487-8363

State government is going broke - despite \$2,104 in state and local taxes coming out of your pocket each year. Is your money

being spent efficiently and effectively? Sam Reed says no.

As your next state auditor, Sam Reed will:

Change the auditor's office from an obscure bureaucracy into what Washington's founders intended it to be - the taxpayers' champion.

Change the office to audit state government for *performance*, not just balance its books.

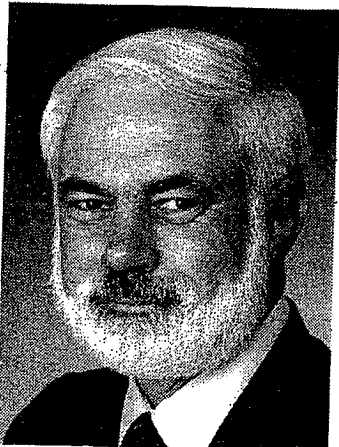
Change the auditor's relationship with local officials to help them become more efficient users of your local tax dollars.

Sam Reed will bring *real change* to the State Auditor's Office....an end to a 60-year, one-party dynasty.

Sam Reed has the experience to make the changes he advocates. As Thurston County Auditor, Sam Reed has received widespread recognition for his accomplishments. He has won six prestigious National Achievement Awards from the National Association of County Officials and seven Awards of Excellence from the International Government Finance Officers Association.

Reed is a Certified Professional Finance Officer with a Masters Degree from WSU. Married for 29 years, he has two children.

Vote Sam Reed....an award-winning auditor....because making Olympia efficient is too important for anything less.



Arthur D. "Art" RATHJEN

Libertarian Party

Campaign Address:
Committee to Elect
Art Rathjen
P.O. Box 4412
Federal Way, WA 98063
Telephone: (206) 527-6149

Independent: As State Auditor, Art Rathjen will be *independent* of those he is auditing, unlike old party politicians who would

have an inherent conflict of interest in auditing the agencies run by their political cronies.

Being Auditor is a public trust, the taxpayers' defense against fraud or misuse of our tax dollars. *Independence* is required!

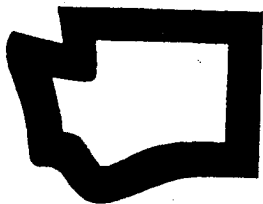
Principled: Libertarian Art Rathjen believes, like Thomas Jefferson, in limiting government to its legitimate function: helping individuals defend themselves, their rights, and their property; that people should be free to achieve their full potential and pursue happiness without limits, so long as they respect the equal rights of others.

This viewpoint is *independent* from the old party politicians and bureaucrats who advocate *bigger* government, *more* regulations.

Qualified: Washington has had only three Auditors since 1905. Unlike both old party candidates for Auditor, Art Rathjen is *not* a career politician. He's an experienced engineering manager, *qualified* to lead the Auditor's Office in continuous improvement of productivity and quality of services.

Art has a Master of Science in Electrical Engineering and a BS in Psychology, is a Viet Nam veteran, lives with his wife and son in Seattle, and enjoys skiing, mountaineering, volunteer trail building, and sea kayaking.

The above statements are an exact reproduction of those submitted by the candidates. The Office of the Secretary of State has no editorial authority.



Attorney General



Christine GREGOIRE

Democrat

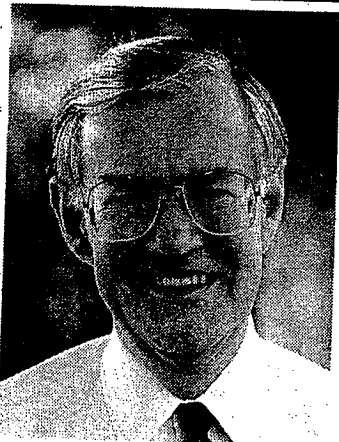
Campaign Address:
People for Chris Gregoire for
Attorney General
P.O. Box 2114
Olympia, WA 98507-2114
Telephone: (206) 956-3326

Christine Gregoire has the experience to be our next Attorney General. She is the only candidate who has worked in the Attorney General's office. Gregoire worked her way up to become the first woman Deputy Attorney General, running operations in eastern and western Washington. Along the way, she earned a reputation as a "savvy legal strategist" and "a tough negotiator" leading the state's efforts on landmark cases.

She has fought for us before the U.S. Supreme Court, Congress, and our legislature and has successfully taken on the federal government at Hanford and the Navy's Everett Homeport. She will be the people's lawyer our state needs and deserves.

Christine Gregoire is a first-time candidate. She is running because the job of Attorney General is too important to be left to politicians only seeking higher office. Only Gregoire is offering an agenda that covers the full scope and duties of the state's top lawyer. Known for her integrity, Gregoire is the only candidate who is not drawing a taxpayer-paid salary while campaigning for the job.

A graduate of the University of Washington and Gonzaga Law School, Gregoire lives in Olympia with her husband, Mike, and their two daughters.



Norm MALENG

Republican

Campaign Address:
Citizens for Norm Maleng
P.O. Box 4242
Seattle, WA 98104
Telephone: (206) 622-6004

Norm Maleng's record of getting tough on violent crime and drugs, and protecting those who need a helping hand, sets him apart.

As Staff Counsel to Senator Warren Magnuson's Commerce Committee, he helped write the law against flammable children's clothing.

Elected King County Prosecutor, he set up a Special Assault Unit to fight child abuse and protect battered women that became a national model.

He led Governor Gardner's Community Protection Task Force, formed in the aftermath of several outrageous sex crimes, and won a victory for community safety from sex predators.

He has helped restore the Crime Victims Compensation Fund that's helped victims by making criminals pay for their crimes.

His hard work and ability won such wide respect that he was re-elected three times without opposition.

As Attorney General, Norm Maleng will continue standing up for us. His priorities for the office are:

- Protection of children from abuse and neglect;
- Forging a partnership with local law enforcement to combat crime;
- Cracking down on consumer fraud;
- Enforcing laws protecting our air, water, and natural beauty in a way that is predictable, consistent, and fair.

Put a tough fighter in our corner as Attorney General: Norm Maleng.



Homer L. BRAND

Populist Party

Campaign Address:
Committee to Elect
Homer Brand
12537 51st Place S.
Tukwila, WA 98178
Telephone: (206) 432-9537

Homer Brand is committed to conscientiously performing the duties of Attorney General in accordance with the Constitution

of Washington state. Homer believes that the law should not respect persons, so citizens of Washington can expect equal treatment under the law with special favors for no one during Homer's term of office. Having no desire to become a career politician, Homer has consented to serve the people of Washington for one term only.

Homer has been a resident of Washington since 1945, has been married 30 years, and has five children.

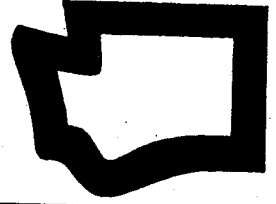
After attending Northwestern University and University of Connecticut, Homer received his bachelor's degree in electrical engineering from the US Armed Forces Institute.

Homer's military service includes 10 years in the Navy, three years in the Air Force, service in World War II, special advisory service to the Chinese Nationalist Army at Shanghai, and service in the Korean War.

As CEO of an independent courier service, Homer employed over 75 people locally and directed company operations in seven western states. For over 25 years at Boeing, he conducted quality control inspection for aerospace electronics and experimental guidance and telemetry systems. Homer was also a licensed real estate salesman and managed properties for 15 years.

The above statements are an exact reproduction of those submitted by the candidates. The Office of the Secretary of State has no editorial authority.

Commissioner of Public Lands



Jennifer M. BELCHER

Democrat

Campaign Address:
Citizens for Jennifer Belcher
1820 State Avenue N.E.
Olympia, WA 98506
Telephone: (206) 956-0193

Our Lands Commissioner must be prepared to make tough, educated decisions to protect both jobs **and** the environment. I have a strong record of protecting both—a record in the House of Representatives of nearly 100% on labor **and** environmental issues. Washington must be a leader in commodity production—and do it in an environmentally sound way.

The Commissioner manages 5 million acres of forest, farm, and aquatic lands, and makes decisions that vitally impact our economy and quality of life. The next commissioner must ensure that our lands are properly managed to generate revenue for our schools and jobs for thousands of workers. She must be experienced enough to make those decisions so that we also protect other public resources such as fish and wildlife habitat and provide a variety of recreational opportunities.

As a state representative for the past 10 years and chair of the Natural Resources Committee, I've provided leadership on issues ranging from economic development assistance in timber communities to new forestry practices and protection of sensitive areas.

My endorsements for this office include the State Labor Council, WEA, Firefighters, Women's groups, Federation of State Employees, WEnPAC. I'll work **with you** to make those tough decisions.



Ann ANDERSON

Republican

Campaign Address:
Ann Anderson for
Commissioner of Public Lands
2203 Airport Way S., Ste. 110
Seattle, WA 98134
Telephone: (206) 622-8061

lands for tomorrow.

Education. State timber sales benefit the public school construction fund — and our state's children! As a mother, former teacher, and legislator I believe that education funding is a top priority of government and that it is possible to protect our environment and generate badly needed funds to build and remodel our schools. My expertise and working knowledge of the forest products industry will help me accomplish this challenge.

Environment and Economy. Healthy farms and forests lead to a healthy environment and a prosperous economy. The balance that's needed between our economy and our environment can be achieved. But, balance can only be achieved through sound management policies that refuse to pander to extremists on either side of the debate.

Leadership and Experience. In a state senate, I have been recognized by my colleagues as a tough negotiator and an effective leader for my work in support of small business, reforming education, protecting property rights and passing the 1991 Clean Air Act, a model for the rest of the country.

I would appreciate your vote in this critical race.

If elected Lands Commissioner, I will balance the economic needs of today while protecting the environmental integrity of our



William L. McCORD

Libertarian Party

Campaign Address:
14417 S.E. 41st Street
Bellevue, WA 98006
Telephone: (206) 746-2855

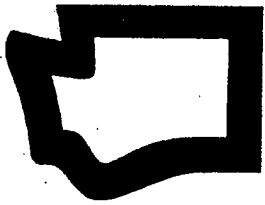
the natural resource industries overseen by DNR. His active history in environmental issues exceeds his opponents' contributions, having helped pass the State Environmental Policy Act, establish the Department of Ecology, and test the law as a citizen litigant. Throughout this involvement, he's emphasized the interdependence of environment and economics, not accepting simplistic doctrines that make industry and environment incompatible. He will impartially mediate disputes that pit employment opportunities against sound environmental policy.

Neither a career politician nor a career bureaucrat, Bill McCord has a science degree, over ten years professional experience in laboratory and field sciences, business experience, and currently works as an educator/counselor.

Bill McCord will restore scientific accountability and fiscal soundness to DNR. With over twenty years of citizen activist experience, he has the skills to mediate disputes over natural resources with an even and impartial hand. With substantial experience in science, environmental law, and business, he will initiate profitable understorey growth/harvest programs, stimulating entrepreneurs to create new business and employment opportunities.

Bill McCord, rooted in four generations of Washingtonians, is outside the two-party monopoly; has no direct nor indirect ties to

The above statements are an exact reproduction of those submitted by the candidates. The Office of the Secretary of State has no editorial authority.



Superintendent of Public Instruction



**Judith
BILLINGS**
Nonpartisan
 Campaign Address:
 Friends of Education for
 Judith Billings
 P.O. Box 2937
 Olympia, WA 98507
 Telephone: (206) 754-3559

Judith Billings is our state's most effective advocate for all children. As Superintendent of Public Instruction, Judith is leading the movement to reform education and adequately fund schools.

Judith's leadership has resulted in: reduced class size for elementary schools, early intervention services for kindergarten through grade six, more dropout prevention and drug abuse education, and the largest increases in funding for education programs in twelve years.

Judith has also pushed hard to move decision making from the state to local districts.

Perhaps Judith's most valuable accomplishment has been in convincing educators and politicians that together we must deal with the whole child. To learn well, children must be healthy, loved and free from violence. Each child's individual intellectual, social and physical needs must be met for that child to learn and prepare for a productive life.

Judith has spent thirty years in education — at the local, state and federal levels, including thirteen as a classroom teacher with at risk children. She is also an attorney. She is endorsed by the State Labor Council, the Washington Education Association and leading business people and educators.

Judith and her husband, Don, live in Pierce County. They have four children and seven grandchildren.



**Teresa "Terry"
BERGESON**
Nonpartisan
 Campaign Address:
 The Terry Bergeson Campaign
 P.O. Box 19577
 Seattle, WA 98109
 Telephone: (206) 728-9713

The quality of education will determine the quality of our State's future. I have a vision of what schools can and must be and the experience to lead education into the 21st Century. As SPI, I will build consensus on education reform and unify parents, educators, students, business and community leaders around the plan we build to achieve it.

The goal is clear. We must prepare our children to live, learn, and work successfully in our changing world. They must learn the traditional basics of *reading, writing and mathematics* and the new basics of *thinking, relating and planning*.

Education must change to meet this goal. I am running to lead the change, to cut SPI bureaucracy, to help local districts, and to free educators to teach.

During my 28 years as a teacher, guidance counselor, organizational leader, and administrator, I have seen the power of public schools to change children's lives. Despite the challenges, if we work together creatively, we can motivate and equip *all* children to succeed.

In its endorsement, the *Seattle Times* stated, "Bergeson has the dynamic personality of both a leader and consensus builder. . . . Terry Bergeson offers the best hope of making statewide school reform possible."

The above statements are an exact reproduction of those submitted by the candidates. The Office of the Secretary of State has no editorial authority.

Insurance Commissioner



Deborah SENN

Democrat

Campaign Address:
Deborah Senn for Insurance
Commissioner
1207 Pine Street
Seattle, WA 98101
Telephone: (206) 467-4113

Deborah Senn is endorsed by U.S. Representatives Norm Dicks, Jim McDermott, Al Swift, and Jolene Unsoeld; Mayors

Sheri Barnard, Gene Liddell, and Norm Rice; the Washington State Labor Council; and numerous others.

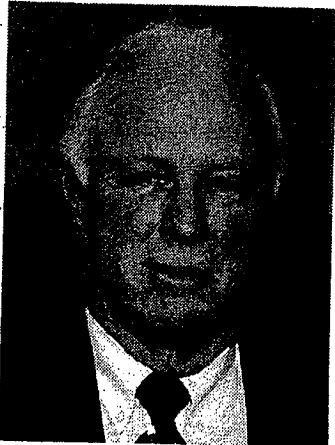
Attorney Deborah Senn has been an effective advocate against utility rate hikes. She's fought for victims of domestic violence and child abuse, for fair wages for school employees, and to end employment discrimination. This is the kind of background that deserves our trust. Now, she'll use the Insurance Commissioner's existing powers to fight for affordable health insurance.

Until Deborah Senn raised the issue, the incumbent neglected health insurance reform. As Commissioner, Senn will combat skyrocketing costs, arbitrary exclusions for pre-existing conditions, and loss of coverage when people change jobs.

The incumbent has been in office for 16 years. He accepts contributions from insurance company executives. Deborah Senn will not accept such contributions.

The incumbent's inaction has caused the loss of over 100 million of your tax dollars to bail out insolvent insurance companies. Deborah Senn will require insurers to be financially sound.

If you're paying more for insurance and getting less coverage, or if you cannot afford insurance - Vote for Deborah Senn, a leader for change.



Richard G. "Dick" MARQUARDT Republican

Dick Marquardt continues to win national acclaim as a fighter for consumer rights. A long-time Seattle resident, Dick served as

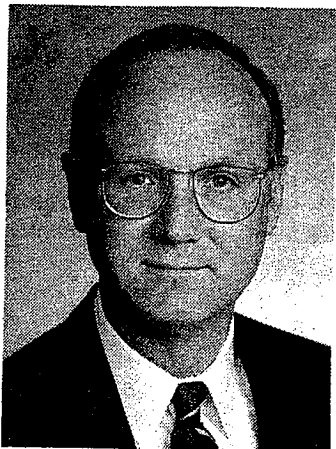
a State Senator and was Selective Service chief before being elected Insurance Commissioner.

His years of dealing with people's insurance problems have convinced Dick that universal health care must be adopted, but he's committed to improving our present insurance system now. Washington is the first state to look at insurance companies' refusal to pay for "experimental" procedures, and Dick is seeking continuous coverage for people changing from one insurance plan to another.

"I am proud of my staff, particularly their work on consumer protection," Dick says. "My investigative team has won national praise for ferreting out white collar crime."

Dick has been a leader in protecting senior citizens from health insurance sales and policy abuses. His Senior Health Insurance Benefits Advisors (SHIBA) volunteer program has been copied by practically all other states, but it began here in Washington.

Dick banned misleading TV celebrity insurance pitches, and stopped more than a dozen junk mail insurance marketing schemes. Keep experience and integrity in the Insurance Commissioner's office. Keep Dick working for you in Olympia.



Brian McCULLOCH Independent

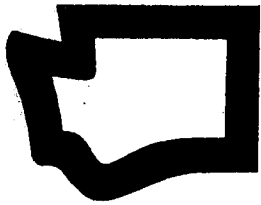
Campaign Address:
P.O. Box 60194
Seattle, WA 98160-0194
Telephone: (206) 546-5744

"Can you risk not being paid promptly and fairly by an insurance company when you are sick or hurt, your car is wrecked or stolen, your home or business is damaged, a loved one dies or when you retire? No Washingtonian should be required to do so, yet that is what has happened and will happen unless you elect a knowledgeable, decisive Insurance Commissioner.

I will apply my 22 years of experience as a professional insurance consultant and executive to protect you from financially weak insurers and unfair claims practices. I am on record repeatedly having warned the incumbent about unsafe and unsound firms. Elect me and I will make sure that we will not again be faced with covering \$200 million in lost premium taxes used to bail-out bankrupt companies or sending subsidies to other states such as California.

Insurance is a big and complex business. Its regulation has a greater, direct impact on your pocketbook than any other state agency. You need an expert on your side. As the independent candidate, I am not beholden to any political party or special interest. My commitment, as *your Insurance Commissioner*, is to protect your rights as policyholders and taxpayers."

The above statements are an exact reproduction of those submitted by the candidates. The Office of the Secretary of State has no editorial authority.



Justice of the Supreme Court

Position 1



Barbara MADSEN

Nonpartisan

Campaign Address:
Friends of Barbara Madsen
P.O. Box 2487
Renton, WA 98056
Telephone: (206) 622-4887

Judge Barbara Madsen will protect the liberties guaranteed all our citizens. The Supreme Court needs her outstanding leadership, as well as her acute ability to listen and render fair judgements.

Proven leadership for our future

Judge Madsen, elected Presiding Judge of Seattle Municipal Court, will bring fresh perspective to the Supreme Court. Madsen, selected by her colleagues to lead Washington's busiest court these past three years, has been serving the public as a Court Commissioner, Magistrate and Judge since 1985.

Balanced experience

A 1977 Gonzaga Law School graduate, Madsen has practiced in Eastern and Western Washington, serving as a defense attorney and a prosecutor. Appointed Special Prosecutor for two consecutive terms, Madsen developed the child abuse component of Seattle's Family Violence Project. She prosecuted sensitive political matters and serious domestic violence and child abuse cases.

Bringing compassion to Washington's highest court

Barbara Madsen, a working mother of four, combines common sense and legal training in her judgements. Her balanced legal background as well as experience in the most culturally diverse court in Washington makes her sensitive to issues confronting us all. In these times of wavering public confidence, we need the strong, honest and compassionate voice of Judge Barbara Madsen.



Elaine HOUGHTON

Nonpartisan

Campaign Address:
Committee to Elect
Elaine Houghton
950 S. Fawcett
Tacoma, WA 98402
Telephone: (206) 627-6627

"For her courage, conscience and compassion, with these gifts she truly has made a difference." Those words were inscribed on the award when I became the first woman named Washington Trial Lawyer of the Year in 1991. I hold those words dear because they speak to both my skill as lawyer and my commitment to helping people.

I have committed my career to righting injustice. The injustice of a child's brain destroyed because a manufacturer chose not to warn parents of the product's danger. The injustice of a young woman stabbed and left brain-damaged after her employer refused to respond to employee fears of an unsafe parking lot except to say "wear tennis shoes."

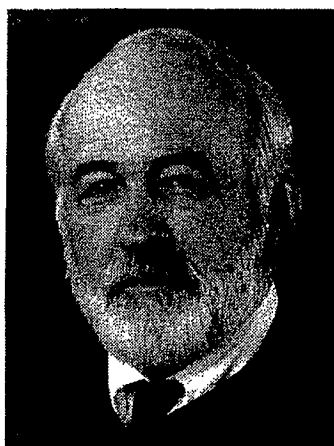
I am proud of my work and the recognition that work has received. Martindale-Hubble, a 125 year old legal rating publication, gave me its highest rating (AV), which is limited to the top 10% of all lawyers.

And retired Supreme Court Justice Vernon Pearson has honored me with his endorsement: "The Citizens of this State deserve a Justice with the energy, intellect and ability of Elaine Houghton. She has proven commitment to justice for all citizens."

The above statements are an exact reproduction of those submitted by the candidates. The Office of the Secretary of State has no editorial authority.

Justice of the Supreme Court

Position 2



**James M.
DOLLIVER**

Nonpartisan

**Campaign Address:
Committee to Re-elect
Justice James M. Dolliver
P.O. Box 4037
Seattle, WA 98104
Telephone: (206) 464-4224**

Judicial elections are the means whereby citizens hold judges accountable for their conduct in office. I am proud of my work on our state's highest court and stand on my record.

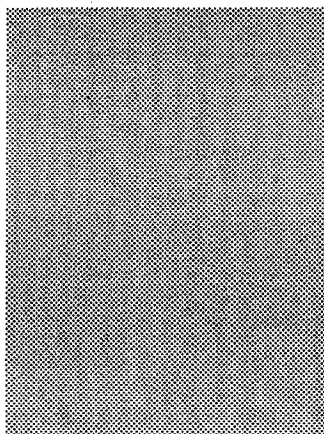
During my sixteen years on the Washington Supreme Court I have worked successfully to streamline judicial administration and to reduce the backlog of cases to be decided.

I believe citizens need a first-hand understanding of our judicial system. When I became Chief Justice, the Supreme Court began to hold sessions throughout our state, not just in Olympia.

For me, education is a top priority. I have served as an adjunct law professor and a trustee of the Washington Center for Law-Related Education and the University of Washington Law School Foundation. I am a trustee of the University of Puget Sound and serve on the Board of Visitors of its law school.

My commitment to public service extends beyond the legal community. I have been active with my church, the Boy Scouts, the Nature Conservancy, the Washington State 4-H Foundation, the United Way and many other civic organizations.

I believe I have been a good judge: honest, independent, hardworking and fair. I am ready and willing to serve.



**Kevin Patrick
DOLAN**

Nonpartisan

The legal system should be used for our protection and benefit, not to line the pockets of lawyers, government or big business. Our individual constitutional rights should be preserved, not taken away. Instead the Supreme court is actively pursuing a policy of restricting our rights.

The court should be working to weed out frivolous lawsuits and expensive legal ploys designed to drag out lawsuits and generate more legal fees. Instead, the court's decisions are protecting and perpetuating the current system.

Members of the Supreme court are seriously out of touch with what we need and want from the legal system. Most were appointed, not elected, and have served without opposition for as long as twenty one years. We did not intend these positions to be lifetime appointments.



State Representative

Fifteenth Legislative District

P
O
S
I
T
I
O
N
1



Margaret RAYBURN

Democrat

Campaign Address:
Margaret Rayburn
Campaign
P.O. Box 644
Grandview, WA 99350

Margaret is truly an example of what a public servant should be. It is not only *what* Margaret Rayburn *has accomplished* that merits our support, it is the way in which she has conducted the public trust. Ensuring that government works effectively for the individual is the mark of her legislative career. It has generated recognition for her as an Outstanding Legislator by such diverse organizations as the Chamber of Commerce, Washington Association of Conservation Districts, and Vocational Educators.

She is renowned as fair and bi-partisan in her approach to the problems we, the people, face.



Jim HONEYFORD

Republican

Campaign Address:
Committee to Elect
Jim Honeyford
P.O. Box 844
Sunnyside, WA 98944
Telephone:
(509) 837-VOTE

Jim Honeyford will make a positive difference for the people of the 15th District.

Honeyford, 53, is a resident of Sunnyside. He and his wife, Jerri, have raised four children there. In addition to being an educator, Jim operates two small farms. He has been active in his church and community. Jim served six years on the Sunnyside City Council.

His personal and community focus has always been to plan ahead for positive growth and to eliminate waste, negative regulations, and unnecessary growth of government.

Jim Honeyford will put his talents and experience to work for the people.

P
O
S
I
T
I
O
N
2



Forrest BAUGHER

Democrat

Campaign Address:
Committee to Elect
Forrest Baugher
P.O. Box 290
Parker, WA 98939
Telephone: (509) 452-9220

Forrest Baugher is a lifelong resident of the Yakima Valley and owns and operates a 60 acre fruit orchard. We need representation in Olympia that understands the problems facing rural families.

Reducing health care costs, protecting our communities from crime, promoting job development, fighting against higher taxes, and creating solid educational systems are issues Forrest believes must be better represented in Olympia.

We face tough times in rural Washington. We need strong leaders who understand that changes need to be made. With Forrest Baugher as our state representative, we can get back to basics. We can put rural Washington first.



Barb LISK

Republican

Campaign Address:
Barb Lisk Campaign
P.O. Box 1005
Zillah, WA 98953
Telephone: (509) 829-6850

Barb Lisk thinks we need a positive change in state government. By working together, we can make government more responsive to its citizens.

Her priorities include a sound educational system and a healthy economic climate that nurtures business and jobs. Barb also believes policy makers need to recognize the diversity of our state, with its important agricultural and timber interests as well as its urban concerns.

"We need leadership whose vision for the future of Washington is one that will keep us a leader in the nation." Barb Lisk is a common sense choice for State Representative - 15th District.

The above statements are an exact reproduction of those submitted by the candidates. The Office of the Secretary of State has no editorial authority.

State Senator

Seventeenth Legislative District



Dean SUTHERLAND Democrat

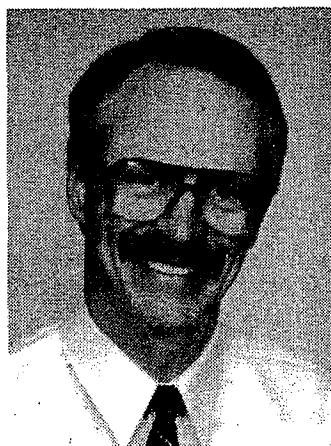
Campaign Address:
Sutherland for Senator
23503 N.E. 108th Street
Vancouver, WA 98682
Telephone: (206) 896-4303

We must *meet today's challenges* head on—regardless of their size or complexities. That is what being a Senator means to me. It also means having the courage to speak out forcefully and effectively at any level of government when powerful special interests try to take control of our lives and communities.

To *meet today's challenges* we must enhance and update our schools and colleges to provide better educational opportunities. We must promote jobs and economic opportunity. We must ensure safe, clean neighborhoods and maintain a high quality of life. And, we must control the skyrocketing costs of health care and halt the massive increases in property taxes.

Redesigning government to meet today's needs is not going to be easy; efficiency and innovation are not always welcome. However, we must do so if government is going to deliver the services we want for the price we are willing to pay.

Being your Senator means understanding the issues, being involved locally and statewide, developing solutions, and taking action to implement them. I am involved, I know the issues, and I am prepared to meet today's challenges. *I need your vote to turn today's challenges into tomorrow's triumphs.*



Tim HEENAN Republican

Campaign Address:
Committee to Elect Tim Heenan
316 S.E. 123rd Avenue A-2
Vancouver, WA 98684
Telephone: (206) 254-4071

Tim Heenan, 43, is a life-time resident of Southwest Washington. Tim is married to Janine and has four children. He is a small business owner and has worked as a negotiator, management consultant and customer contact representative for Clark Public Utilities District. Tim is former chairman of the Concerned Citizens Crime Control Commission of Clark County and is a patron of the Washington State Grange.

For Tim Heenan the five major issues for Skamania and Clark Counties are jobs, jobs, jobs, jobs, and more jobs. Tim believes a good job that pays a living wage is much better than any government-run social or welfare program.

Tim Heenan will fight proposals for higher taxes and a state income tax. Dean Sutherland has voted for over a billion dollars in new taxes since first coming to the Legislature.

Tim Heenan favors term limits for elected officials because he believes our founders did not intend to have a separate class of elected officials. Tim also believes that services provided by a utility should cost the same whether people live inside or outside of city limits.

Vote for integrity, honesty and energy. Vote for Tim Heenan for state Senator.

State Senator

Eighteenth Legislative District



Ireda GROHS

Democrat

Campaign Address:
Ireda Grohs for State Senate
P.O. Box 456
Kelso, WA 98626
Telephone: (206) 425-2839

Ireda Grohs, currently serving on the Kelso City Council, has a proven track record as one who listens to constituents and responds to their concerns.

Ireda believes we need leadership in maintaining a healthy economy so that families can take care of themselves, our children deserve a quality education that will prepare them to lead productive lives, and we all deserve health care and protection from crime.

Ireda's many community activities include the Kelso Chamber of Commerce Legislative Committee, the Association of Washington Cities Legislative Committee, the Cowlitz - Wahkiakum Regional Transportation Policy Board, past chair of Cowlitz Transit Authority, founding Board member of Women in Network, League of Women Voters, Washington State Podiatric Board, Lower Columbia College Office Administration Advisory Board, Washington State Historical Society, Cowlitz County Historical Society, Kiwanis and Emmanuel Lutheran Church.

Ireda has worked in the Legislature, city government, mental health, law enforcement and county government.

Ireda is married, mother of two and grandmother of two, and a life time resident of the state of Washington; will be a Senator who works for solutions to our complex problems.



Linda SMITH

Republican

Campaign Address:
P.O. Box 65068
Vancouver, WA 98665
Telephone: (206) 750-7216

Linda Smith is still the one people turn to.

We turn to Linda for her unshakeable resolve to fight high taxes, to improve the efficiency of state government, to make sure Southwest Washington's schools are the best they can be, that our needs aren't overlooked in Olympia.

Helping people has always been Linda Smith's number one priority — whether it's been helping an elderly person find medical attention through the maze of state government, coming to the aid of an injured worker's family, or helping block a 14 percent sales tax increase in Olympia.

Linda is a state leader in children's issues who re-wrote our state's adoption and foster care laws to get children into permanent, loving homes sooner. And Linda is fighting right now to keep government from locking people out of their own private property.

Service, not politics, is Linda Smith's goal as our Senator. That's why Linda is working to clean up government as a sponsor of a measure to reform campaign financing.

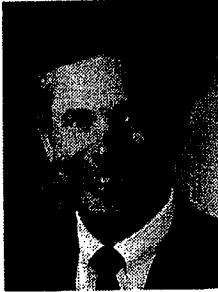
On election day, vote for Linda Smith — the one people turn to.



State Representative

Seventeenth Legislative District

P
O
S
I
T
I
O
N
1



**Kim
PEERY**

Democrat
Campaign Address:
People for Peery
P.O. Box 1015
Camas, WA 98607
Telephone: (206) 892-6080

As chair of the House Education Committee, Representative Peery led the fight to let parents choose which public schools their children attend. He has won passage of legislation that frees local school districts from state regulations, reduces class size in the early grades, and holds schools accountable for student learning. Peery is also a leader in law enforcement and government efficiency, and uses his membership on budget-writing committees to promote public safety and local economic development. He is a lifelong resident of the district, business owner, the father of three, and a former teacher and coach.



**Bud
QUINN**

Republican
Campaign Address:
Vote Quinn for a Change
117 S.E. 155th Avenue
Vancouver, WA 98684
Telephone: (206) 256-4076

Bud Quinn believes that protection and conservation of our environment is vital to maintaining the happiness, health and well-being of our citizens. Material necessities of life and a strong and sustained economy require both the utilization of our natural resources and the industrial activity necessary to refine, process and distribute those natural resources.

There has never been more need for grassroots citizen involvement and true representation of the people in our state. We need to regain control of our government, demand accountability, and remove careless government management before it suffocates our republic.

Quinn will work to this end.

P
O
S
I
T
I
O
N
2



**Holly
MYERS**

Democrat
Campaign Address:
Committee to Re-elect
Holly Myers
P.O. Box 9900 #142
Vancouver, WA 98668
Telephone: (206) 256-6160

Actions speak louder than words. Holly Myers tackles tough issues and gets the job done for the people of the 17th District.

Holly is making a difference for our families by creating job opportunities, supporting health care reform, and protecting our quality of life. She will continue to fight for victim's rights and push for educational excellence.

Government needs new ways to solve old problems. Holly Myers has taken that message to Olympia. Holly represents us by aggressively fighting for laws that make sense. She is meeting the tough challenges with real solutions. Let's keep Holly working for us!



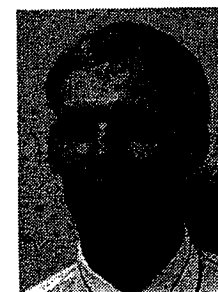
**Chris
LUCIA**

Republican
Campaign Address:
2054 S.E. 158th Loop
Vancouver, WA 98684
Telephone: (206) 254-0985

Much can be said about legislative experience, little of it good.

Over the past few years the 17th district has been represented by one of the most experienced gang of legislators in the state. And what have the people of the 17th district gained from their legislator's experience? Taxes are up; services are down; unemployment is up; property rights are down; the budget is expected to be \$1.6 billion in the red, and yes, 17th district legislators have two more years experience.

It's time for a change, it's time for Chris Lucia. We can't afford two more years of incumbents.



**Jim B.
BECKER**
Libertarian Party

Campaign Address:
Becker for House Comm.
P.O. Box 3892
Vancouver, WA 98662
Telephone: (206) 696-3130
ext. 1776

I believe government is not working; not providing the services people expect at a price they are willing to pay.

Institutions created to provide these services suffer from several maladies. These include inflexible rule-making, unresponsive bureaucracies, and a lack of accountability.

My proposals for change follow two guidelines. Firstly, government should treat citizens as customers. Secondly, inflexible regulation should be replaced with incentives.

For example, I would replace the current school system with parental choice. This would be accomplished by providing vouchers to parents that could be redeemed at the school of their choice, public or private.

The above statements are an exact reproduction of those submitted by the candidates. The Office of the Secretary of State has no editorial authority.

State Senator
Nineteenth Legislative District



Sid
SNYDER
Democrat

Campaign Address:
Citizens for Sid Snyder
P.O. Box 531
Long Beach, WA 98631
Telephone: (206) 642-2519

Sid Snyder's success in the Senate comes as no surprise to the folks who know him. He's a self-made man — a pull himself up by the bootstraps type of person. Sid learned early-on that honesty, hard work, and plain and simple common sense could get a person a long ways in this world — and it has.

Even before being elected, Sid Snyder had made a powerful impression on his colleagues in the Senate. Coming from a modest upbringing in Kelso, Sid went from box boy, to successful supermarket owner and businessman. As a legislative employee, Sid started as elevator operator and eventually became Secretary (Chief Executive Officer) of the Washington State Senate.

Two years ago, in an unprecedented move, Sid Snyder became the only freshman Senator in the History of Washington State to be elected to the respected and powerful position of Democratic Caucus Chair. Since that time, Sid has worked tirelessly on behalf of the people of the 19th District. Timber workers, fishermen, business owners, and school kids have all been touched by Sid Snyder's leadership.

Sid lives in Long Beach with his wife of 42 years, Bette Kennedy Snyder. They have three children and three grandchildren.

Republican - No candidate filed.



State Representative

Eighteenth Legislative District

P
O
S
I
T
I
O
N
1



**Betty Sue
MORRIS**

Democrat

**Campaign Address:
Morris for the House
12633 N.W. 19th Loop
Vancouver, WA 98685**

First elected in 1988, Betty Sue Morris has established a reputation for effectiveness, honesty, and hard work. A strong voice for improved law enforcement and senior citizens, her top priorities for a third term include affordable housing and health care for young families, and better access to college educations for youth and adults from middle income families.

She is Vice-chair of the Fish and Wildlife committee and on the Revenue and Health Care committees. A wife and mother at home, the former news reporter advocates welfare reform and more balance between growth management and private property rights.



**Don
LYNCH**

Republican

**Campaign Address:
Don Lynch
P.O. Box 575
Winlock, WA 98596
Telephone: (206) 785-4519**

In this election year we have the choice of whether to continue politics as usual, trading favors and selling votes, or to have a genuine change. Don Lynch will take his values and beliefs to the legislature with him and will work for the best interests of Southwest Washington as a whole. The main issues this year are holding the line on taxes, reducing state employment in Olympia, preserving private property rights and working to address health care. The practical experience Don has gained as a self-employed accountant and farmer makes him the most qualified candidate for the position.

P
O
S
I
T
I
O
N
2



**Jim
SPRINGER**

Democrat

**Campaign Address:
Committee to Elect
Jim Springer
P.O. Box 1100
Kalama, WA 98625
Telephone: (206) 673-4988**

Jim Springer is as upset as you are about state budget deficits, the lack of affordable health care, the need for meaningful education, the erosion of property rights, and a deteriorating environment.

With over 18 years of experience as a city councilman and mayor, 13 years as a small business owner, as a former educator, and with a life-long dedication of public service work, Jim has a respected record of getting the job done.

Jim Springer is a hard-working dedicated family man who will work effectively for you to bring about the changes we all so deservedly need.



**Tim
YOUNG**

Republican

**Campaign Address:
Committee to Elect
Tim Young
3600 Main, Suite B2
Vancouver, WA 98663
Telephone: (206) 750-7216**

Having been the Vice President of a manufacturing sales agency, Tim Young knows the difficulties facing small businesses. Having been a laborer, he knows the struggles facing the working man. Having experienced unemployment through a depressed economy Tim understands this issue. Tim will work hard for growth of businesses and jobs.

Tim is a strong defender of private property rights, family values, the sanctity of life, and independence for senior citizens. As a student completing a Bachelor of Science degree in Business Administration, as a father and husband, Tim believes in solid academics, through involvement by parents and school choice.

The above statements are an exact reproduction of those submitted by the candidates. The Office of the Secretary of State has no editorial authority.

State Senator Twentieth Legislative District



Tom NOGLER

Democrat

Campaign Address:
Campaign to Elect Nogler
P.O. Box 97
Littlerock, WA 98556
Telephone: (206) 866-2491

Tom Nogler is an area resident of twenty years. He has worked as a small businessman in the timber industry and in the human services field. Tom is the current board president of the Child Abuse Prevention Association of Washington. Healthy families are a Tom Nogler priority.

He has promoted job creation by advocating alternative forestry practices such as commercial thinning and the milling of logs in the district vs. massive exports. Tom also urges the cleanup of toxic waste sites to create jobs.

Tom Nogler will meet the challenges of: economic development, providing quality education, strengthening our forestry economy, job retention, protecting our children, and ensuring a dignified retirement.

Tom Nogler wants a state run by the voters who pay to run it, not by a select few "interests." Tom wants a state where the "consultants" are first and foremost the constituents. We have an excellent history of running our own affairs, both efficiently, and until recently, with a budget surplus. We should now return to doing so by voting for Tom Nogler.



Neil AMONDSON

Republican

Campaign Address:
Committee to Elect
Neil Amondson
P.O. Box 945
Centralia, WA 98531
Telephone: (206) 736-4570

Neil Amondson is a native of the 20th District and knows firsthand what growing up and raising a family here means. Neil and his wife Susan have two children and believe a strong family is one of the keys to building prosperous communities.

A former State Representative, Neil currently serves in the State Senate, where he sits on the Ways and Means, Environment and Natural Resources and Rules Committees.

Neil Amondson is one of Washington's leading advocates for private property rights. Neil authored legislation that guarantees fair compensation to property owners who lose their land through regulation or government land-use policies.

Neil believes older people should be able to live secure, independent lives. He's been fighting tax increases that hurt people living on fixed incomes.

Neil Amondson opposes new taxes. He knows families are hurt when government regulation and high taxes discourage the very businesses that create jobs. He's putting jobs first and working to encourage economic growth.

A graduate of Morton High, Neil Amondson holds degrees from Centralia College (engineering) and Pacific Lutheran University (business administration). He has a record of hands-on experience in public and private jobs, including timber, mining, agriculture, public service and small business.



State Representative

Nineteenth Legislative District

P
O
S
I
T
I
O
N
1



**Mike
RILEY**

Democrat

**Campaign Address:
Committee to Re-elect
Mike Riley
725 Lone Oak Road
Longview, WA 98632
Telephone: (206) 636-0717**

As our representative, Mike Riley put his experience running his family's log-trucking business and 18 years as a Cowlitz County Sheriff's investigator to work for us.

Mike sponsored several bills to help timber-dependent communities. Particularly, legislation to improve education and re-training opportunities for displaced timber workers and programs to help attract business to Southwest Washington.

Believing that taxpayers must be spared from more taxes and wasteful government spending, Mike worked to close a \$900 million budget shortfall *without* requiring new taxes.

In Olympia, Mike listened to us and worked for our interests instead of special interests.



**Mark R.
OBTINARIO**

Republican

**Campaign Address:
Citizens for
Mark R. Obtinario (R)
420 Suthard Road
Castle Rock, WA 98611
Telephone: (206) 274-7963**

We need a Representative who will listen to and work for all of us - the working people, the families, the communities of Southwest Washington. As your Representative, I promise to be that person.

I will provide leadership to control spending, fight higher taxes, protect victim's rights, and work to restore and guard our personal property rights.

Washingtonians deserve and should expect the most well-educated citizenry in the world. We have gotten off track educationally. As your Representative, I will get us back on track again.

P
O
S
I
T
I
O
N
2



**Bob
BASICH**
Democrat

There is no easy answer to the problems facing our district, our state, and our nation. I firmly believe that to solve these problems we must work together. When I was teaching political science at Grays Harbor College I told my students that change will not occur from the Washington D.C. down but must occur from the bottom up. The grassroots level is crucial to any attempts at change. In running for re-election I am asking you to join a community effort to make good things happen.

Republican - No candidate filed.

The above statements are an exact reproduction of those submitted by the candidates. The Office of the Secretary of State has no editorial authority.



State Representative

Twentieth Legislative District

P
O
S
I
T
I
O
N
1



Dave CHAPPELL

Democrat
Campaign Address:
Citizens to Elect
Dave Chappell
P.O. Box 1314
Centralia, WA 98531
Telephone: (206) 736-0259

Dave Chappell, running for the first time, is a lifelong district resident. He is a high school teacher, a police officer, a sportsman, and the parent of two small children. His youngest was born developmentally disabled.

Dave Chappell listens to *our* concerns. He knows the issues of education, crime, and the needs of working families. He has experienced the pain of the handicapped, and has seen the shortcomings of our health care system. He loves our rural communities, and will fight for our agriculture and timber families.

We need Dave Chappell's firsthand experience working for us in Olympia.



Rose BOWMAN

Republican
Campaign Address:
Citizens for Rose Bowman
416 W. Cherry
Centralia, WA 98531
Telephone: (206) 736-5954

For the last four years, I have worked hard to combine my experience as a parent, small-business owner and community volunteer, and my years of living on a farm with wisdom from the people of our district.

This experience and input was invaluable as I led the fight to provide responsible solutions to the health-care needs of our citizens, to improve our education system, and to protect our families, jobs, pocketbooks and property rights.

I will continue to work with you and I ask you to allow me to continue to provide the leadership we need in Olympia.

P
O
S
I
T
I
O
N
2



Chris HANSEN

Democrat
Campaign Address:
People to Elect
Chris Hansen
P.O. Box 1447
Eatonville, WA 98328
Telephone: (206) 832-3007

Chris Hansen is a small business owner, Legislative spokesperson for the Washington State Drilling Association, a substitute teacher, and a mentor for Parents and Students in action against drugs. She is a member of the groundwater advisory and water utility coordination committees.

Chris believes that healthcare should be a right, not a privilege and small business must be strengthened, not buried in bureaucracy.

Chris believes resources need to be managed with good sense not hysteria.

The Constitution is there to protect our *inherent* rights, rights that cannot be abridged by our government. *Chris Hansen* is determined to protect those rights.



Bill BRUMSICKLE

Republican
Campaign Address:
Brumsickle for
Citizens Committee
P.O. Box 130
Centralia, WA 98531
Telephone: (206) 736-8722

Bill Brumsickle has worked effectively for the needs of 20th District residents the past four years, displaying common sense, responsive action and strong leadership.

Bill has strongly opposed general tax increases that hurt hard-working families, while working hard to create an economic climate that will help attract new businesses and create more jobs.

As a retired educator, Bill has been committed to ensuring quality education for our children.

In addition to being Assistant Republican Caucus Chair, Bill serves on the House Education, Revenue, and Natural Resources & Parks committees.

Bill and his wife, Mary Ann, live in Centralia.

The above statements are an exact reproduction of those submitted by the candidates. The Office of the Secretary of State has no editorial authority.

THE OFFICE OF PRECINCT COMMITTEE OFFICER

THE OFFICE OF PRECINCT COMMITTEE OFFICER

In addition to the various state and county offices which will appear upon the general election ballot, most voters will have the opportunity to vote for the office of "precinct committee officer."

WHO IS ELIGIBLE

State law (RCW 29.42.040) provides that any person who is a registered voter and a member of a major political party may become a candidate for the office of precinct committee officer by filing a declaration of candidacy and paying a \$1 filing fee to the county auditor. Since voters do not register by political party in Washington, a candidate declares himself or herself to be a Democrat or a Republican at the time he or she files for the office. The filing period for the office of precinct committee officer begins at the same time as the filing period for other partisan offices (the fourth Monday in July in even-numbered years), and lasts for three weeks, ending on the third Friday following that date.

ELECTION OF PRECINCT COMMITTEE OFFICER

Candidates for precinct committee officer do not appear on the primary ballot but rather are placed directly on the general election ballot, and the candidate receiving the most votes in his or her precinct for each political party is declared elected. State law (RCW 29.42.050) does provide, however, that to be declared elected, a candidate must receive at least 10% of the number of votes cast for the candidate of his or her party receiving the greatest number of votes in that precinct.

TERM OF OFFICE AND VACANCIES

The term of office for anyone elected to the office of precinct committee officer is two years, and commences upon the official canvass of election returns by the county canvassing board. Should a vacancy occur in the office (caused by death, disqualification, resignation, or failure to elect), the usual process is for the chairman of the party central committee to fill the vacancy by appointment. Appointments to fill vacancies cannot be made between the state general election and the organization meeting of the county central committee, which must be held prior to the second Saturday in January following the election of precinct committee officer.

DUTIES OF PRECINCT COMMITTEE OFFICER AS MEMBERS OF THE COUNTY AND STATE CENTRAL COMMITTEES

1. Each precinct committee officer is a member of the county central committee. The county central committee has the authority to fill vacancies on the party ticket for partisan county offices and for legislative offices in

districts entirely within that county when no candidate files for such a position or when a candidate or nominee dies or is disqualified leaving no candidate of that party for such an office; they may also nominate persons for appointment to these offices if an incumbent of that party resigns; and finally, elect members to the state central committee.

2. The state central committee has the authority under state law (RCW 29.42.020) to:
 - Call caucuses and conventions.
 - Provide for the election of delegates to national nominating conventions.
 - Fill vacancies on the party ticket for any federal, state or legislative office which encompasses more than one county.
 - Nominate persons to fill vacancies caused by resignation or death of an incumbent of that party in state offices and legislative offices in districts which encompass more than one county.
 - Provide for the nomination of presidential electors.
 - Perform other functions inherent in such an organization.

NON-STATUTORY DUTIES AND RESPONSIBILITIES OF PRECINCT COMMITTEE OFFICER

Specific duties and responsibilities of a precinct committee officer are usually determined by either the county or state central committees. The following duties are commonly assigned to precinct committee officers by their party organization:

- Keep informed on current issues and candidates, study the party platform.
- Attend meetings of county committees and actively participate in fund-raising activities.
- Obtain lists of registered voters from the County Auditor's office.
- Canvass the precinct and become acquainted with the voters residing therein.
- Establish a record of eligible voters and party members within the precinct.
- Encourage voter registration within the precinct.
- Distribute party election materials during election campaigns.
- Recommend party members to work as precinct election officers.
- Encourage voters to get out and vote on election day.
- Encourage the use of absentee ballots.
- Hold precinct caucuses at certain selected times for the purpose of adopting resolutions and selecting delegates to the county conventions.

Individuals who are interested in serving as a precinct committee officer should contact the chairman of the county central committee of their party or the state committee office of that party.

VOTING BY ABSENTEE BALLOT

INSTRUCTIONS: Any registered voter who will not be able to vote in person may apply for an absentee ballot. For your convenience, a request form is located on the following page. Include your printed name, address, at time of registration, address to which the ballot is to be mailed, and your signature. The voter's signature must compare to the voter's permanent registration record. **Mail your request directly to your county auditor. See addresses below.** A request may be made in person, by phone, mail or messenger. It must be received by the county auditor no later than the day before the election. **Exception:** A voter may apply for an absentee ballot up to and including the day of the election if the voter was admitted to the hospital no earlier than 5 days before the election and confined to the hospital on election day. Contact the hospital administrator or county elections department for such a ballot. **An absentee ballot must be voted and postmarked no later than the day of the election.** Make your request as soon as possible to allow sufficient time for an exchange of correspondence with the county elections department.

COUNTY	ADDRESS	CITY	ZIP	NUMBER
Adams	210 West Broadway	Ritzville	99169	659-0090*
Asotin	P.O. Box 129	Asotin	99402	243-2084*
Benton	P.O. Box 470	Prosser	99350	783-1310x5618*
Chelan	P.O. Box 400	Wenatchee	98807	664-5432*
Clallam	223 East 4th St.	Port Angeles	98362	452-7831
Clark	P.O. Box 5000	Vancouver	98668	699-2345
Columbia	341 East Main St.	Dayton	99328	382-4541*
Cowlitz	207 North 4th	Kelso	98626	577-3002
Douglas	P.O. Box 456	Waterville	98858	745-8527*
Ferry	P.O. Box 498	Republic	99166	775-5200*
Franklin	1016 North 4th Ave.	Pasco	99301	545-3536*
Garfield	P.O. Box 278	Pomeroy	99347	843-1411*
Grant	P.O. Box 37	Ephrata	98823	754-2011x333*
Grays Harbor	P.O. Box 751	Montesano	98563	249-4232
Island	P.O. Box 5000	Coupeville	98239	679-7366
Jefferson	P.O. Box 563	Port Townsend	98368	385-9119
				1-800-831-2678
King	500 4th Avenue	Seattle	98104	296-1560
Kitsap	614 Division St.	Port Orchard	98366	876-7128
				1-800-872-4503
Kittitas	205 W. 5th	Ellensburg	98926	962-7503*
Klickitat	205 S. Columbus	Goldendale	98620	773-4001*
Lewis	P.O. Box 29	Chehalis	98532	748-9121x278
				1-800-562-6130
Lincoln	P.O. Box 366	Davenport	99122	725-4971*
Mason	P.O. Box 400	Shellon	98584	427-9670x470
				1-800-562-5628
Okanogan	P.O. Box 1010	Okanogan	98840	422-3712*
Pacific	P.O. Box 97	South Bend	98586	875-9317
Pend Oreille	P.O. Box 5000	Newport	99156	447-3185*
Pierce	2401 S. 35th Rm. 200	Tacoma	98409	591-7430
				1-800-446-4979
San Juan	P.O. Box 638	Friday Harbor	98250	378-2161
Skagit	P.O. Box 1306	Mt. Vernon	98273	336-9305
Skamania	P.O. Box 790	Stevenson	98648	427-5141x226*
Snohomish	3000 Rockefeller Ave.	Everett	98201	388-3444
				1-800-562-4367
Spokane	W. 1116 Broadway	Spokane	99260	456-2320*
Stevens	P.O. Box 189	Colville	99114	684-7514*
Thurston	2000 Lakeridge Dr SW	Olympia	98502	786-5408
				1-800-624-1234
Wahkiakum	P.O. Box 543	Cathlamet	98612	795-3219
Walla Walla	P.O. Box 1856	Walla Walla	99362	527-3204*
Whatcom	P.O. Box 398	Bellingham	98227	676-6742
Whitman	P.O. Box 350	Colfax	99111	397-6270*
Yakima	128 N. 2nd St. #117	Yakima	98901	575-4043*

*Area Code: 509



ELECTION DAY AND VOTING

Where to vote:

At your precinct's polling place. The name and number are on your registration card and the location is published in the newspaper sometime the week before the election. You may also call your county auditor.

When to vote:

Polls are open from 7:00 a.m. to 8:00 p.m.

How to vote:

Four methods of voting are used in Washington State: punchcard, lever machine, paper ballot and optical scan. Each county uses one or a combination of these methods. If you need assistance, you may ask an election worker to explain how to use your county's voting device or ballot.

Absentee voting:

1. Regular Absentee Ballot: If you cannot vote in person, you may vote by absentee ballot. You may request an absentee ballot, in person, by mail or by telephone, as early as 45 days before the election, but no later than the day before the election. Registered voters may request an absentee ballot by telephone for themselves and other members of their immediate family by calling their county auditor.

Exception: If you are confined to the hospital and were

admitted no earlier than five days before the election, you may apply for an absentee ballot up to and including the day of the election.

2. Service Absentee Ballot: Members of the military service may apply for an absentee ballot at any time. Such service voters will be mailed an absentee ballot for the next primary or general election, or special election to be held subsequent to the date of application.

3. Special Absentee Ballot: A voter who is working outside the continental United States and will be unable to return a regular absentee ballot by normal mail delivery may apply for a **special absentee ballot** 90 days before the primary or general election. The special absentee ballot will contain the offices and measures, if known, scheduled to appear on the ballot. The county auditor will include a list of candidates who have filed and a list of any issues that have been referred to the ballot before the application was filed.

The voter may use the special absentee ballot to write in the name of an eligible candidate for each office and vote on any measure.

4. Ongoing Absentee Ballot: If you are a disabled person or a person over the age of 65, you may apply for status as an ongoing absentee voter. This will entitle you to automatically receive an absentee ballot for each subsequent election through January of the next odd-numbered year. At that time, the county auditor will automatically notify you and permit you to renew your status as an ongoing absentee voter. Contact the county auditor for an application.

COMMENT SHEET

Please take a minute and complete this comment sheet. Your comments provide valuable assistance in the improvement of the Voters Pamphlet. Please mail this to: Voters Pamphlet, Office of the Secretary of State, P.O. Box 40231, Olympia, WA 98504-0231.

- | | YES | NO |
|---|--------------------------|--------------------------|
| 1. Was this Voters Pamphlet delivered early enough to help you study the issues? | <input type="checkbox"/> | <input type="checkbox"/> |
| 2. Was the format readable? | <input type="checkbox"/> | <input type="checkbox"/> |
| 3. Was the information provided for each measure, including the ballot title and explanatory statement, clear and understandable? | <input type="checkbox"/> | <input type="checkbox"/> |
| 4. Do you have any suggestions which might improve the Voters Pamphlet or is there any other voter information you would like to have included in future editions of the Voters Pamphlet? | <input type="checkbox"/> | <input type="checkbox"/> |

Additional comments: _____

Your comments count!

ACKNOWLEDGEMENT

A special thank you to the many people who helped publish the 1992 Washington State Voters Pamphlet, including:

Erin Allen
Marikay Bates
Lee Blankenship
Cyndy Boehm
David Brine
Eric Campbell
Lisa DesRosiers
Marjorie Doucette

David Elliott
Kathryn Jo Lowe
James McDonald
Mike McDonald
Sean McDonald
Gary McIntosh
Jim Mullinax
Jeff Nyberg

Ryan Nyberg
Winnifred Olsen
Charlotte Ottavelli
John Pearson
Jeanie Robinson
Barbara Siemion
Don Whiting
Jean Womer

ABSENTEE BALLOT REQUEST

I _____ HEREBY DECLARE THAT I AM A REGISTERED VOTER
PRINT NAME FOR POSITIVE IDENTIFICATION

AT _____
RESIDENCE ADDRESS MAILING ADDRESS

CITY ZIP PHONE NO. PRECINCT

SEND MY BALLOT TO: SAME ADDRESS AS ABOVE THE ADDRESS BELOW

STREET ADDRESS CITY OR TOWN STATE ZIP

This application is for the State General Election, November 3, 1992.

**TO BE VALID, YOUR
SIGNATURE MUST
BE INCLUDED**

SIGNATURE X _____

FOR OFFICE USE ONLY

REGISTRATION NUMBER _____ REGISTRATION VERIFIED _____ ADDRESS CHANGE _____
PRECINCT CODE _____ BALLOT CODE _____ LEG. DIST. _____
BALLOT MAILED _____ BALLOT RETURNED _____

----- CLIP FORM OUT ON THIS LINE - MAIL TO COUNTY AUDITOR -----

ABSENTEE BALLOT REQUEST

I _____ HEREBY DECLARE THAT I AM A REGISTERED VOTER
PRINT NAME FOR POSITIVE IDENTIFICATION

AT _____
RESIDENCE ADDRESS MAILING ADDRESS

CITY ZIP PHONE NO. PRECINCT

SEND MY BALLOT TO: SAME ADDRESS AS ABOVE THE ADDRESS BELOW

STREET ADDRESS CITY OR TOWN STATE ZIP

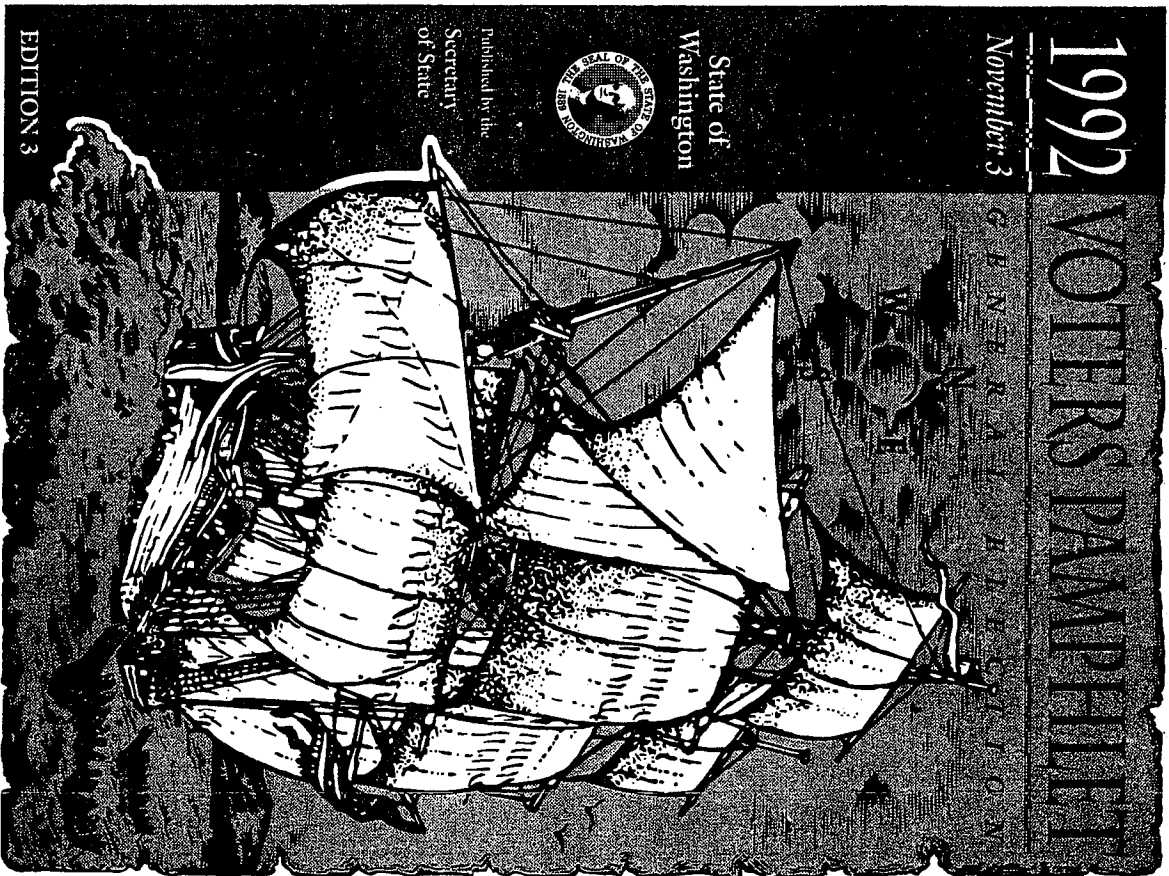
This application is for the State General Election, November 3, 1992.

**TO BE VALID, YOUR
SIGNATURE MUST
BE INCLUDED**

SIGNATURE X _____

FOR OFFICE USE ONLY

REGISTRATION NUMBER _____ REGISTRATION VERIFIED _____ ADDRESS CHANGE _____
PRECINCT CODE _____ BALLOT CODE _____ LEG. DIST. _____
BALLOT MAILED _____ BALLOT RETURNED _____



BULK RATE
U.S. POSTAGE
PAID
 SEATTLE, WA
 PERMIT NO. 1216
 CAR FT. PRESORT

RESIDENTIAL PATRON, LOCAL
EDITION 3