

# Silent Art Auction

Opening Windows to the World

May 23<sup>rd</sup>, 6:30-9pm

WTBBL, 2021 9<sup>th</sup> Ave, Seattle WA 98121



Washington Talking Book & Braille Library

[wtbbl.org](http://wtbbl.org) | 800-542-0866 | [wtbbl@sos.wa.gov](mailto:wtbbl@sos.wa.gov)



# Event Program

**6:30:** Bidding opens

**7:00:** Welcome message from Danielle Miller, WTBBL Director

Message from Sara Jones, Washington State Librarian

Message from Steve Hobbs, Washington Secretary of State

**8:30:** Bidding closes

Live music provided by WTBBL Patron, Geraldine  
Taeckens



# #1

## Olympic Vantage, Winter Night

Henry Amick

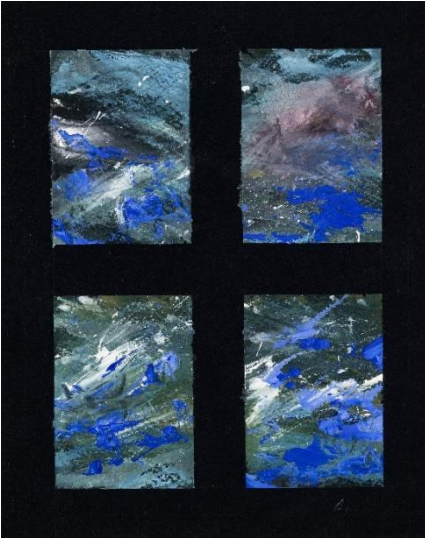
WTBBL patron

Print

11"x14"

**Artist statement:** Made with non-toxic, preservative-free, small-batch gouache from the Pacific Northwest and designed with the principles of poetry and environmental psychology to offer moments of restoration in our busy lives.

**Description:** Imagine looking out a classic six-over-one window one winter night onto a field glistening in a blanket of snow below the Olympic Mountains. The window frame is lightly penciled-in on white paper. The top three panels reveal deep blue mountain peaks, while in the row below, three panels of the slightest green-hued tinge of the aurora borealis shines through. Below this grid lies one large, horizontal panel containing the icy blue, Dungeness Valley snow fields.



# #2

See Seaview  
(I-C)

Henry Amick  
WTBBL patron  
Print, 11”x14”

**Artist Statement:** See item #1.

**Description:** Two rows of two vertical rectangles bordered with black paper. Inside the rectangles are a variation of gray, white and blue hues applied with choppy brushstrokes, resembling four windows looking out onto a stormy ocean. Three windows show a slightly different perspective of the same close-up view of the frothy Salish Sea, while the upper right panel features red highlights, accenting the whole piece.



## #3 Glowing Gloomy Night at Pike Place Market

Paula Bock

WTBBL Volunteer

Photo, 10"x8"

**Artist Statement:** On a dark and stormy night, Pike Place Market glows at the speed of light; zooming in on cheer, despite the gloomy weather.

**Description:** Photograph of Pike Place Market on a rainy night. Red-orange neon signs that read "Public Market" and "Farmer's Market" illuminate the slick cobblestone street. Red, purple, green and blue rays of light bloom outwards from the center of the image.



## #4 Northern Lights Tumbler

Jill Borrows

Friend of WTBBL

Drink Tumbler, 10"x2.5"



## #5 Multicolored Glittery Tumbler

Jill Borrows

Friend of WTBBL

Drink Tumbler, 10"x2.5"

**Artist statement:** I started making tumblers during Covid. My love of Alaska inspired me to make the Northern Lights Tumbler. These are individually handmade, so each one is unique. Hand wash only.

**Item #4 Description:** A drink thermos with a clear lid. On the thermos is a silhouette of a pine tree with the shimmering blue-green lights of the Aurora borealis in the background. The stars are UV-activated and glow in the dark.

**Item #5 Description:** A drink thermos with a clear lid. On the thermos is a swirl of magenta, purple, and emerald with embellishes of gold and silver sparkles and cheetah print.



# #6

## Once Upon a Night

Marissa DeForrest

WTBBL Patron

Acrylic on Wood Panel

24"x45"

**Artist statement:** I have always been fascinated by the moon and stars. This painting blurs the line between fantasy and reality, transporting you somewhere dreamlike. The flowers symbolize protection, accomplishment, and love.

**Description:** A large moon hangs in a star-filled sky with misty colorful clouds and purple mountains that line the horizon. In the foreground are closeups of Scottish thistles in the left corner, pink poppies in the center and a white rose in the right corner. This is painted on a wood panel with an arched top.



# #7



Pack and Go,  
From Analog  
to Digital

Lynn Domingo

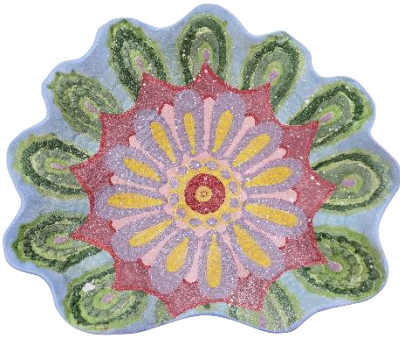
WTBBL Patron

Canvas Bag, Radio, and  
Insulated Waterbottle Bag  
Bag: 18" x 18" x 9"

Radio & Waterbottle bag:  
8" x 4" x 5"

**Artist statement:** When looking through windows, traveling and constantly bumping into power failures in this digital age, the Pack and Go canvas bag provides supplies for those emergencies.

**Description:** A canvas tote bag with "Washington Talking Book & Braille Library" lithographed on each side. Inside is an insulated maroon waterbottle bag and a brand new solar, electric, battery-powered transistor AM/FM radio. Batteries included.



Front



Back

# #8

## Sea Creatures Centerpiece

Anne Farmer

WTBBL Volunteer

Glazed white clay  
stoneware

16"x16"

**Artist statement:** I'm inspired by the marine life of the Pacific Northwest and the surprises that lie at the bottom of the sea. I created the texture on the front of this piece by pressing a handmade doily into the clay. It was designed and created with love at Pottery Northwest, Seattle's premier professional pottery studio and school.

**Description:** A large shell-shaped bowl with ridges along the edges. The front depicts a sunflower starfish splayed out in hues of green, blue, red, pink, purple and yellow. The back of the item is painted with various sea creatures: a crab, lobster, salmon, turtle, shark, whale, jellyfish, and sea anemone.



## #9 The Children's Discovery of a Magical Book Leads Them to a Wondrous Adventure

Amber Frederick

Friend of WTBBL

Collage with Ink, Gouache paint, Pen, Foil paper  
18"x24"

**Artist statement:** Before both of my children were born, I painted them pictures to decorate their room. Of course, when I was pregnant with my son, I had no way of knowing he would be born with a visual impairment. After getting his CVI diagnosis and learning more about it, I realized that the small-detailed, busy, low-contrast, pastel-colored pictures I had created for him weren't the best for a kid who has a visual impairment. [Continued on the next page.]

**Item #9 artist statement continued:** I made him a new picture, keeping in mind what I have learned thus far about CVI. The new picture used bold colors, shiny material, and contrast. I used the same elements when creating this picture and added a textural element of raised shiny circles to appeal to the audience tactically along with visually.

The picture is of two children who discover a book, which is also a window. From the book emerges a magical dragon that takes the children on a journey of discovery and adventure. This is what the experience of reading really feels like! Books are windows that open our minds to imaginative journeys and real-life knowledge. These reading experiences are such a powerful force for good in our lives, letting us understand ourselves and our fellow humans better, and giving us joy, confidence, and greater empathy. We are more connected with the world and each other when we read a book.

**Description:** A magical red and gold dragon comes out of a blue window/book with two children riding on its back. One child is a little girl and behind her sits a smaller boy with glasses. They are riding through a dark sky with shiny golden and blue circles.



## #10 Teal/White Knitted Hat

Libby Goldstein

Friend of WTBBL

Knit Hat made of Washable Bamboo  
Yarn, 8"W x 8"L



## #11 Mint/Teal Knitted Hat

Libby Goldstein

Friend of WTBBL

Knit Hat made of Washable  
Bamboo Yarn, 8"W x 7.5"L

**Artist statement:** I enjoy knitting, especially for people I love. I began knitting when I was 8 years old, and all of my pieces are made with lots of love. I started to knit a sweater for my father when I was a kid, but quickly lost patience. I finally finished the sweater in my freshman year in college. Since then, I focus on smaller projects like hats!

**Item #10 description:** A teal knit hat with small, marble-sized, white balls of yarn stitched on the front that spell the word "Love" in braille.

**Item #11 description:** A mint green knit hat with small, marble-sized, teal balls of yarn stitched on the front that spell the word "Love" in braille. The bottom part of the hat is teal.



## #12 Gray/Green Knitted Hat

Libby Goldstein

Friend of WTBBL

Knit Hat made of Washable  
Bamboo Yarn, 7.5"W x 5"L



## #13 White/Teal Knitted Hat

Libby Goldstein

Friend of WTBBL

Knit Hat made of Washable  
Bamboo Yarn, 9"W x 6.5"L

**Artist statement:** See Items #10-11.

**Item #12 description:** A gray knit hat with small, marble-sized, olive-green balls of yarn stitched on the front that spell the word “Love” in braille. The bottom part of the hat is green.

**Item #13 description:** A white knit hat with small, marble-sized, teal balls of yarn stitched on the front that spell the word “Love” in braille. The bottom part of the hat is teal.



# #14

## Path Between

Elizabeth Gould

WTBBL Volunteer

Quilt

42”x46”

**Artist statement:** Elizabeth Gould has been quilting for thirty years. She has a background in the natural sciences, which strongly influences her quilts; as well as degrees in Library & Information Sciences, which makes her love the geeky orderliness of quilting; and another master’s degree in Intercultural Communication, which makes her an appreciator of differences in quilts, fabrics, designs, and people.

**Description:** Two printed fabrics speak to each other in terms of shared color, while the cinnamon-hued background brings out a less prominent color in both of them. The path between leads you through the quilt, with a little piece of it leading you off the edge and into the binding to explore beyond. This piece was quilted by Krista Moser.



# #15

## Spring Flowers

Emi Green

WTBBL Volunteer

Sculpture with paper  
and leaves, 16"x16"



# #16

## Rose Wreath

Emi Green

WTBBL Volunteer

Sculpture with paper  
and yarn, 16"x16"

**Artist statement:** I started making wreaths when I was thinking about spring. Spring is my favorite season. Everything comes back to life!

**Item #15 Description:** A light green heart-shaped wreath made of small leaves and colorful roses.

**Item #16 Description:** A light green wreath made from yarn and adorned with colorful paper roses.





## #17 Hinge Boxes 1 & 2

Sally Jo Hagen

WTBBL Staff

Sculpture made of Altoid tins and polymer clay

3.75"x2"x1"



## #18 Hinge Boxes 3 & 4

Sally Jo Hagen

WTBBL Staff

Sculpture made of Altoid tins and polymer clay

3.75"x2"x1"



**Artist statement:** This was a fun project done with my sister Jill Borrows. To make these, polymer clay was imprinted and painted and then baked onto an Altoid tin.

**Item #17 Description:** Two Altoid tins covered with textured floral patterns in shimmering jewel tones.

**Item #18 Description:** Two Altoid tins covered with textured patterns in shimmering lilac and gold hues.



# #19

## Bay Side

Winfield Hobbs

WTBBL Volunteer

Watercolor

17.25"x21.25"



# #20

## Oyster House #2

Winfield Hobbs

WTBBL Volunteer

Watercolor

21.25"x17.25"

**Artist statement:** I enjoy exploring figures and landscapes through the mediums of watercolor, acrylic, sumi ink, charcoal and pastel.

**Item #19 Description:** An impressionist painting of three sailboats on calm water. One boat is yellow, one is red, and the other is blue.

**Item #20 Description:** A white building with dark red stripes sits in a field of yellow with the silhouette of an emerald forest looming in the background.



# #21

## In the Round

Teresa Janssen

Friend of WTBBL

Basket with ponderosa  
pine needles, raffia,  
beads, and walnut shell  
7"x7"

**Artist statement:** The repetitive motion of coiling when I make a basket can be like following a mandala with the eye, walking a labyrinth. As I stitch, I sift through thoughts to make sense of things. Working with my hands; slow and deliberate, meditative, tactile, and the sweet smell of pine grounds centers me.

**Description:** A shallow round basket of coiled pine needles wrapped with cream and light orange raffia in a wheat stitch pattern. The center is a sliced walnut shell. Copper beads are embedded in the design.



# #22

## Gaze Into my Garden

Camille Jassny

WTBBL Patron/Donor

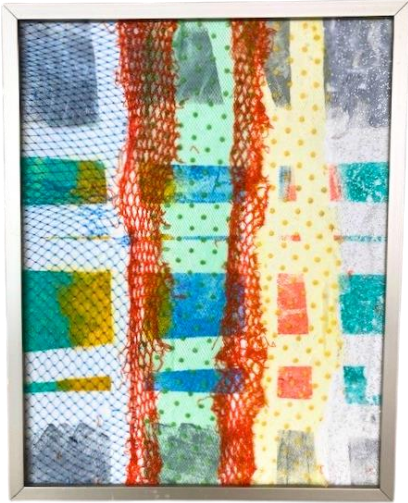
Sculpture with antique buttons and copper wire

11"x4"

**Artist statement:** My bouquets of Button Buds never need watering and bring happiness and joy to those that have them. Each bud is made out of three unique buttons threaded together with copper wire.

**Description:** A white vase holds a dozen button buds that peek out of the vase on their copper wire stems. The blooms are made from a colorful assortment of large buttons of all shapes and sizes stacked on top of one another.

# #23



## Peak Through the Curtains

Camille Jassny

WTBBL Patron/Donor

Tactile painting with  
foam core, artist's tape,  
acrylic glue, acrylic  
paint, and netting

11¼"x14¼"

**Artist statement:** My work is all tactile because I am blind, and I see through my hands. Please feel free to touch and view with your hands.

**Description:** An abstract painting of a window inside a silver frame. The windowpanes were made using artist's tape to cover part of the board so that I could paint the gaps in with bright red, yellow and green paint. The tape was then removed to reveal blocks of color. On top, there is a layer of yellow, blue, red and orange netting, which makes the curtains!



## #24 Woman with Book

Amy Alison Knutson

Friend of WTBBL

Sculpture with found books, chrome and steel kitchen objects, beads, and copper wire, 4"x 3"

**Artist statement:** In 2016, I wanted to make a truck for my grandson, and I had seen a found object piece on the internet that looked interesting. I've always shopped yard sales and thrift shops, so I just started keeping that project in mind and began collecting a box of parts. Then I made my first piece to justify the space I was taking up in my husband's shop. [Continued on the next page.]

**Item #24 artist statement continued:** He helped me construct it, and it was FUN! I never stopped after that, and I enjoy every part of this process, though I never did get that truck made. I have so much fun doing what I do! What did I used to do? I can't imagine.

**Description:** A sculpture of a person made of silver kitchenware sitting on a stack of books while reading a miniature book. Her name is “Paige,” and her legs and feet are made of spoons, her arms are made of forks, her skirt is a tart tin, and her torso is a brass bowl. Her head is a cute, upside-down toy coffee pot, and her hat is a shiny sherbet dish with ruffled edges. She is wearing copper wire glasses over her black-glass teddy bear eyes, and her dainty ears are made of little wing nuts. A lamp rests behind her that is made from the centerpiece of a vintage coffee pot. The lamp shade is made of two vintage Jell-O tins and adorned with very fancy beaded trim. Paige measures 4”x 3” and little magnets on her arms hold her nicely in place.



# #25

## Happiness Is

Sian Lane

WTBBL Patron

Acrylic paint and  
varnish on canvas

20"x20"

**Artist statement:** Creatively, I love this style of painting, called Acrylic Pour Painting, and I have been doing it for several years.

Personally? It is now my go-to means of stress relief. Being a caretaker for my legally blind husband can be uber stressful, and as his conditions worsen, well, I paint...a lot. This sort of unstructured painting can be immersive and it's forgiving, which has been really helpful in dealing with adversity. This painting makes me happy...hence the name "Happiness Is"!

**Description:** This is a varnished acrylic pour painting, created using a wrecked puddle pour technique. It is a vibrant, colorful piece, with red, magenta, light blue, orange, purple and bright green paint swirled together on a deep canvas with a stapled back.





# #26

## Yellow Brick Road Home

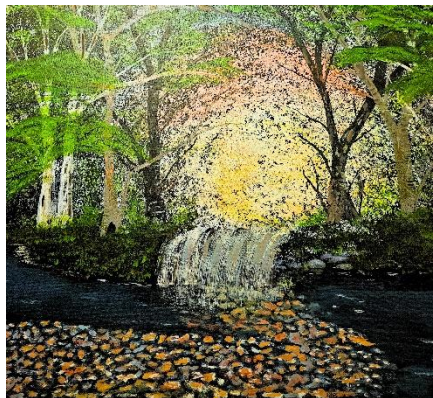
Sian Lane

WTBBL Patron

Acrylic paint, pouring  
medium and varnish  
on cotton canvas  
12"x36"

**Artist Statement:** This is an acrylic pour painting created using a swipe technique, which creates a lacing effect throughout. These warm colors remind me of a sunset or, of course, the famous Yellow Brick Road.

**Description:** A long, vertical, rectangular painting with a gradient of maroon, bright orange, and deep yellow starting at the bottom and swirling to the top.



## #27 Bright Life Flowers

Reed Leisinger

WTBBL Patron

Painting on canvas, 10"x20"



## #28 Live

Reed Leisinger

WTBBL Patron

Painting on canvas,  
10"x17.25"

**Item #27 Description:** A shady forest opens into a halo of yellow light that shines through the trees to reveal a small waterfall that flows into a shallow stream. The ray of light illuminates a path of orange pebbles under the water.

**Item #28 Description:** A vibrant, yellow-green forest peeks through a swath of white, black and gray aspen tree trunks.

# #29

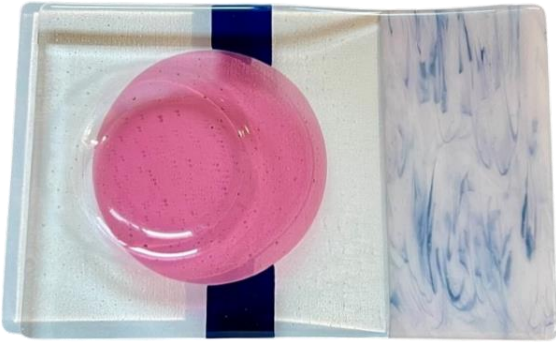
## Moonwave Serving Dish

Zuli Mallinson

Friend of WTBBL

Sculpture with  
Fused Glass

14"x9"x1"



**Artist Statement:** I believe that beauty, hilarity, and hope surround us at all times. I began working in glass in 2010 when I had to retire early due to complications from neurological autoimmune disease. Now, as a kiln-fired glass artist in Portland, OR, I continue to work on active healing, finding vitality through my art, and hopefully inspiring others to find joy on their terms, whatever the circumstances. I work in hot glass that is melted and shaped in a kiln.

**Description:** An iridescent, clear rectangular serving tray in a gentle wave shape with a recessed circle on one side to hold a bowl. The right edge of the tray is an opaque light pink with opal and deep blue streaks swirling throughout. In the left center where the recess is a translucent bubble-gum pink circle with an opaque stripe of midnight blue behind it.



# #30

## Breaktime

Danielle Miller

WTBBL Staff/Donor

Lino cut print on  
paper, 8"x10"

**Artist Statement:** I enjoy the process of linoleum carving, cutting away the surface to leave an image, and then printing it and sometimes feeling surprised at how it turns out. Using a linoleum block and cutting tools to create a print, the black and white image gives a glimpse into a quiet moment.

**Description:** Tan paper with a black block print of a girl with a book and warm drink, taking a moment for herself. 5"x7" in an 8"x10" yellow frame.

# #31

San Juan

Island Seaside

Lori Momchilovich

WTBBL Donor/Friend  
of WTBBL

Sculpture with  
wrapped rocks made  
with sea tumbled  
stones and chair cane  
6"x6"



**Artist Statement:** These sculptures are made out of stones and driftwood that I found on the windswept seaside of South Beach on San Juan Island, WA. The cane and driftwood add a tactile contrast to the smoothness of the stones.

**Description:** Three smooth, dark gray oval stones with intricate wicker weaving belted across their centers. One stone has a small piece of driftwood woven into its center.



## #32 Harmony and Nature

Meagan Murphy

Friend of WTBBL Gathered feathers, sandpaper, wooden beads, non-toxic glue and beading wire on canvas, 18”x24”

**Artist Statement:** When looking through a window, a person sees and feels the outside world. In our ecology and climate, each person shares different experiences. The color, texture and harmony of this piece is a reflection of the diversity and beauty in the world. My friendship as a blind woman combined with Meagan’s education from the Chicago Art Institute made this piece possible.

**Description:** A brown bird with feathers glued onto it stands next to a green tree with a blue, cloudy sky in the background. The bird and tree stand on a rocky ground made of sandpaper.



# #33

## Three Lefts Don't Make a Right

Elizabeth O'Brien

Friend of WTBBL

Sculpture with plaster of  
paris, acrylic resin, and  
ink, 8"x10"

**Artist Statement:** I love to make pieces that can both be seen by the eye and felt by the hand. I became enamored with making duplicates of doll parts because they had a fun, whimsical quality to them. I've been trying to make my work more durable and layered so that it can be enjoyed by all.

**Description:** A gray, glossy, textured slab with a doll face emerging from the center. Three doll hands reach out from the sculpture - two directly under the doll face and one in the bottom right corner. One of the hands is gray while the other two are made of sparkly red resin. The right side of the sculpture is sprinkled with small plaster hearts and stars. More texture is added with drips of gold, pink, and red translucent paint as well as smears of plaster of paris on the left side.

# #34



## Ruffling Feathers

Christie Quoc Tran

WTBBL Donor

Sculpture with glazed  
earthenware clay

6"x5"x4.5"

**Artist Statement:** Birds are often symbolic creatures meant to represent peace, freedom, hope and other positive themes. They can also connote imminent doom and disruption. The latter is the meaning behind this piece. Although it may appear ordinary, diminutive and unimposing, once activated by human touch, breath, and cogitation, this little birdie has a lot to say that can be amusing and even delightful upon activation but can quickly become a nuisance with incessant usage.

**Description:** A sculpture of a bird painted with blue and black glaze.

**Directions:** Pour water into the tail until the belly partially fills with water. There is a small opening in the beak to allow displaced air to escape. [Continued on the next page.]



**Item #34 directions continued:** There is a beveled aperture cut into the tail so that when wind passes through, it will produce a musical note. A steady stream of air blown into the tail will travel down into the water. The water serves to envelop the air into small bubbles. As the air bubbles travel through the belly to the head and release out through the beak, they serve to punctuate the note causing the chirping effect.



## #35 In Every Leaf a Tree

Laurie Rudel

Friend of WTBBL

Mixed media on birch board

18"x18"

**Artist Statement:** I am endlessly fascinated by the structure leaves. I love the rootedness of their stems and how they branch out from that center point.

**Description:** This piece is painted on birch board with deep browns and oranges. In the center is a large piece of textured tissue paper with a single large leaf drawn in white acrylic paint pen.



## #36 The Trees of the Forest Clap Their Hands

Laurie Rudel

Friend of WTBBL

Acrylic painting on birch board, 18”x18”

**Artist Statement:** I love the rough texture of Ponderosa pine trees and how their pine needles dance in the wind and sparkle in the sun. With this piece, I tried to capture that energy.

**Description:** A light gray rectangle sits between two panels of dark, woody brown. The rectangle in the center is filled with whimsical blue and white swirls. The brown panels on either side have been textured to mimic the feel of Ponderosa pine tree bark.

# #37

## Nest of Chicks

Leyah Saylor

WTBBL Patron

Soft Sculpture with  
worsted weight yarn  
and stuffing

6"x6"x2"



**Artist Statement:** I've constructed a variety of tactile art projects. Currently, I'm enjoying crochet.

**Description:** Brown crocheted nest with three crocheted yellow, oval shaped chicks with black eyes and orange beaks.



## #38 Warm Light

Beverly Shaw-Starkovich

WTBBL Patron/Donor

Acrylic painting on canvas, 18"x24"

**Artist statement:** I love working in warm colors, primarily red. Frequently my work reflects my travels and my family. Realistic accuracy isn't always my most important goal, rather, I try to capture a mood, a feeling, or a place.

**Description:** Deep red trees are silhouetted against an orange and yellow background. A warm light emanates from behind the trees; shadows of their branches stretch across the ground.



## #39 Fall's Shadows Tuscany

Beverly Shaw-Starkovich

WTBBL Patron/Donor

Acrylic painting on canvas

14"x11"

**Artist Statement:** See item #38.

**Description:** A Tuscan hill town dotted with rustic-looking Italian homes with bright red rooftops, warm yellow walls, and bright green trees that fill the spaces between buildings. A mountain stretches across a soft orange sky in the background.



## #40 Homecoming (Experimental Braille #6)

Ian Shearer

WTBBL Patron

Acrylic painting with fiber paste and a decoupage braille poem on canvas, 24"x20"

**Artist Statement:** Isolation and marginalization have always influenced my work as a gay artist. These feelings have been magnified since my stroke. Using experimental paint application and typographic media, I explore themes of neurodiversity and disability to build a dream world - things aren't what they seem, but rather what we think they are. [Continued on the next page.]

**Item #40 artist statement continued:** My urban landscapes use metaphor and nocturnes to explore neurodiversity, the workings of the brain, feelings of isolation, and the vagaries of subjective and objective reality to create a sort of magical realism.

This has been my journey and process for 5 years. From learning to hold a paint brush again and trying to capture an image, to then endeavoring to explain the jumble of a brain-damaged mind through paint and type. Decoupage bits of medical records into my paintings, almost indiscernible, reflecting the experience of millions of people living with invisible disabilities.

In 2023, I began to explore fabrication techniques such as acrylic fiber paste to build texture and experiment with how braille might be added into paintings—giving additional or alternate narrative to pieces. This process has evolved through interviews and interactions with viewers, artists, and gallerists with limited or no vision.

I am currently building a body of work that looks like traditional paintings, but on closer examination, has raised sections that allow for tactile viewing. Hidden beneath the paint are swaths of braille that give additional narrative—allowing those with visual difference more agency and interaction with the work.



**Item #40 description:** The outside of a house at night with an illuminated second story window. There are steps leading up to the house. The porch light is on, illuminating the old wood of the walls and doorway. Trees and foliage crawl up both sides of the canvas. A silhouetted figure gazes from the bright second floor window.

In the center top part of the canvas, one inch down, is a raised dot marking the beginning of an 8-line poem in braille by Emily Dickinson.

Predominant colors are green, teal, dark blue and purple, and bright yellow, orange, and white.



Images from Stafford Portraits website



#41, 42, 43, 44, 45

## Stafford Portraits

Amie Stafford

Friend of WTBBL

\$500 gift certificate for a photography portrait session (one certificate per auction item)

**Artist Statement:** Amie Stafford was born in British Columbia to U.S. expat parents. She studied ballet, singing, and fine art. She spent a decade working in the film industry with many well-known and beloved celebrities. She started her portrait studio in Vancouver, BC in 2001. She moved the business to the Seattle/Tacoma area in 2012, where, as a single Mom, she grew it to one of the top 3% portrait studios in the nation and has clients across the country.



# #46

## Jewels of Friendship

Naomi Stein

WTBBL Patron

Bracelet, 9”

Necklace, 18”

**Artist Statement:** These blue stones symbolize the calming nature of friendship. The jewelry was handmade in Bear’s Magic Studio, a place for community gatherings, cultivating lasting friendships, and sharing cultural lifestyles.

**Description:** A bracelet with a line of tear-shaped blue Czech crystals connected with stainless steel, hypoallergenic links; A necklace with a rectangular pendant of raw sapphire and kyanite hung from a plated silver chain.



## #47 Into the Shaft

Edward Swanson

Friend of WTBB

Markers and pastel on paper, 18"x24"

**Artist Statement:** This piece was created during the Vibrant Palette Arts Center open studio sessions and is influenced by Edward's love of trains.

**Description:** A set of train tracks run through the center of the image and into the distance. Below the tracks is a swirling, light blue tunnel that is supported by wooden beams on either side. The background is a black grid where each square is filled with tiny black circles. From inside the circles emerge swaths of vibrant magenta and blue hues.



## #48 Evergator Swampmen

Edward Swanson

Friend of WTBBL

Markers and pastel on paper, 18”x24”

**Artist Statement:** This piece was created during the Vibrant Palette Arts Center open studio sessions and is influenced by the artist’s trip to Louisiana where he rode on a swamp boat. It is in his unique pointillist style.

**Description:** A swamp boat with a fan and red flag on top drifts through aquamarine water towards a red bridge. The sky is a sweeping grid divided with black lines. Each block of the grid is saturated with a different color and pattern. The effect this produces is similar to that of a stained-glass window.



# #49

## Silhouettes on the Shapes

Geraldine Taeckens

Friend of WTBBL

Quilt with Alpaca Wool  
Yarn

66"x53"

**Artist Statement:** Knitting is like the journey of life. One stitch is created, and from that one stitch comes many more. A rhythm begins and a creation unfolds. Sometimes a stitch is dropped and needs to be picked up. Sometimes some undoing is required, and then increased perfection ensues. Since age seven, knitting has propelled me through the rhythm of life.

**Description:** A dark gray, rust orange, and maroon striped alpaca blanket bordered with a garter stitch. The alternating stripes of color contain tactilely defined windows; within each window are varying tactile shapes.



# #50

## Library Mouse

Traci Timmons

WTBBL Staff/Donor

Soft sculpture with  
socks, buttons,  
thread, polyester  
stuffing;

accompanying book  
is handmade with  
board and paper  
18"x6"x3"

**Artist Statement:** Making stuffed animals out of socks references a long tradition of reusing materials found around the house to create toys. Items like worn out socks were commonly used. They were pliable and easily sewn to make dolls and other creatures, and were often filled with cotton or even sawdust. Although I do buy some of my materials new, I also use things like buttons and ribbons (and sometimes even socks) that I find in thrift stores and antique malls. I enjoy continuing this tradition and making things simply.

**Item #50 description:** This stuffed animal (mouse) is made from white, magenta, and gray socks, and stuffed with polyester fill. It has purple ribbons and black button eyes. Its whiskers are made from gray thread. The mouse is accompanied by a handmade book with a light green cover and accordion-folded off-white blank paper inside.



## #51 Abstraction in Blue & Green

### Carol Tobin

WTBBL Volunteer/Donor

Mixed media collage with encaustic wax, prints and watercolor paint, 9"x12"

**Artist statement:** I love working with a variety of media, patterns, and strong colors. I'm also inspired by themes related to the sea.

**Description:** A textured collage with asymmetrical blocks of green, blue, yellow, and teal. Nets and strings adorn the surface.





## #52 Gulf Islands Evening

Carol Tobin

WTBBL Volunteer/Donor

Watercolor painting

16"x20"

**Artist statement:** I have a special love for the San Juans and Gulf Islands. This is an evening view of the Gulf Islands from our sailboat.

**Description:** A sunset on still water with silhouettes of sailboats dotting the horizon. The dark outline of a dense forest encroaches the shoreline on either side, framing the boats embarking towards a mountain range in the distance.

# #53

K.P.

Nick Triggs

Friend of WTBBL

Sculpture of maple wood finished with non-toxic mineral oil, beeswax, and carnauba

3"x2"



**Artist statement:** Five winters ago, a heavy snow broke one of our maple tree's branches – this sculpture is made from that branch. I like maple wood for its warmth and lightness. My hope is that the variety of surfaces will be pleasing to touch.

**Description:** A hand cut and carved light brown maple wood cylinder with sloping ridges running down its length. The bark has been stripped and the wood is untreated.



# #54

## Variant 6

Taran Triggs

Friend of WTBBL

Sculpture of matte  
gold paper, wood,  
and metal

6"x8"x10"

**Artist statement:** Mathematics is all around us in unexpected places, not just in technology, but also in art and nature. With this piece, I wanted people to open their senses to the beauty of math with a polyhedral sculpture that is meant to be held in the hands and explored through multiple senses. It is a representation of carefully planned geometry, intentionally abstract so that while the mathematics of design are evident, every person will be able to have their own interpretation of what the object is.

**Description:** A folded, 3-dimensional gold paper sculpture mounted on metal and light tan wood.

# #55 Seen / Not Seen

Tien Triggs

OSOS Staff

Dimensional painting on paper and canvas, mounted on wood and textured with acrylic paint, colored pencil, ink, watercolor, and thread, 8"x8"



**Artist statement:** What is "seen" is a different experience for each of us, and we often do not wonder about the "not seen." I used the Chromatic Vision Simulator app to guide my color choices and placement so that different patterns and images emerge when viewed through the app or experienced through touch. I hope to invite the viewer to experience "seeing" as others might experience seeing with sight and senses that differ from our own, opening a window to a world that is sometimes "not seen."

**Description:** Two abstract mixed media paintings. One is predominantly black with wavy white lines dispersed throughout. In between these lines are colorful, irregular oval shapes.



# #56

## Lathe Turned Wood Vase with Lid

Larry Wan

WTBBL Donor

Sculpture of walnut and maple, 8"x7"

**Artist statement:** Larry started his woodworking career over 45 years ago starting in a tiny garage. His works have been sold and displayed all over the western United States. Wan specializes in one-of-a-kind creations made from woods of the PNW. He encourages you to touch, feel, and smell the art pieces. Most recently, Larry founded the Blind Craftsman Wood Shop at the Washington School for the Blind. This is a volunteer effort that entails mentorships with students where they can experience the joys of woodworking, learn how to use power tools and complete projects.

**Description:** A lathe turned hollow to form a wood vase with a finial lid made out of walnut and maple wood.



# #57

## Flower Moon

Ashley Zuckerberg

Friend of WTBBL

Mixed media paper

collage on wood, 8"x8"

**Artist statement:** Seattle-area artist Ashley Zuckerberg creates mixed-media artworks and paintings. The bold colors and sense of whimsy often depicted in her pieces are inspired by daily life: both the inspiring and amusing situations she has experienced, as well as visions that reflect serene contemplation. These, combined with subtle eccentric or humorous elements, create work that is truly entertaining and therapeutic, offering a glimpse into a world that is indisputably her own.

**Description:** Black and white hands hold a pale gray moon overlapped by an oversized red flower with large green leaves surrounded by blue and silver foil stars on a background of green and purple.